

MARK	REF. N ^o	SIZE	A	B	C	D	E	F	G
A	5K/298	0-BA	.90"	.50"	.25"	.024" (23 SWG)	.16"	.08"	.35"
D	5K/301	6-BA	.62"	.30"	.13"	.018" (26 SWG)	.10"	.05"	.25"

FINISH: TO BE ELECTRO-TINNED, THICKNESS NOT LESS THAN .0003".

NOTE: PLATING TO BE CARRIED OUT EITHER BY THE ALKALINE SODIUM STANNATE BATH (WITHOUT ADDITION OF GLUE OR OTHER ORGANIC COMPOUNDS), OR BY THE ACID STANNOUS SULPHATE PROCESS.

MATERIAL :- COPPER.

ISSUED BY DRAWING OFFICE DIRECTORATE OF TECHNICAL DEVELOPEMENT.	TITLE - <u>CABLE ENDS, EYE TYPE</u>					DRAWN.	TRACED Bmw 4-9-45
	ISSUE N ^o	1	2 AS	3		CHECKED	APPROVED
	ALTERATION N ^o	MOD N ^o AGS 524	AS N ^o	AS N ^o AGS 663			

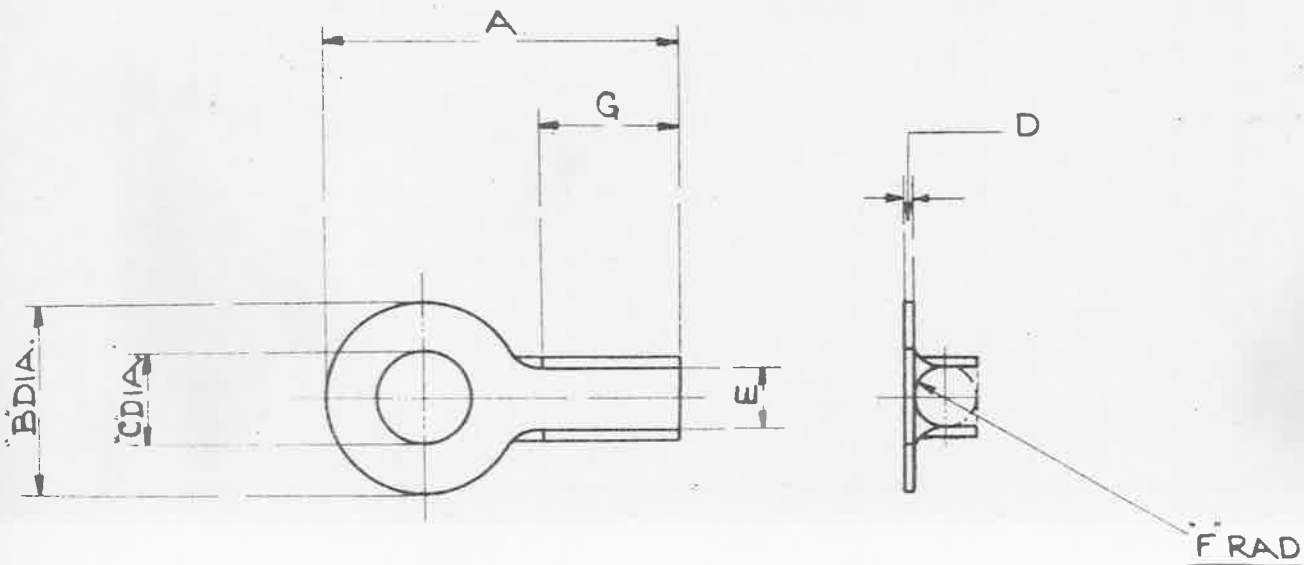
OBSOLESCE - NOT TO BE USED
IN NEW DESIGN WORK. SEE S.D.M. 256

MINISTRY OF
SUPPLY

AGS. No 1681.

SHEET No 1.

No OF SHEETS 1.



MARK	REF. No	SIZE	A	B	C	D	E	F	G
A	5K/298	0-B.A.	.90"	.50"	.25"	.024" (23. S.W.G)	.16"	.08"	.35"
D	5K/301	6-B.A.	.62"	.30"	.13"	.018" (26. S.W.G)	.10"	.05"	.25"

MATERIAL :- COPPER.

FINISH :- TO BE ELECTRO-TINNED, THICKNESS NOT LESS THAN .0003".

NOTE :- PLATING TO BE CARRIED OUT EITHER BY THE ALKALINE SODIUM STANNATE BATH (WITHOUT ADDITION OF GLUE OR OTHER ORGANIC COMPOUNDS), OR BY THE ACID STANNOUS SULPHATE PROCESS

ISSUED BY ROYAL AIRCRAFT ESTABLISHMENT.	TITLE:- CABLE ENDS, EYE TYPE, CHANNEL END. SM 179				DRAWN. J.E.	TRACED IA. 30.9.40
	ISSUE No 4	AS No 215	AS/AGS 3	MOD/ACS 4	CHECKED J.E.	APPROVED. J.E. 29.10.40
ALTER No	AS No 245/524	AS/AGS 663	MOD/ACS 973			