

HOLES IN CLEATS TO SUIT EYELETS



CLEATS HELD TOGETHER BY A BRASS EYELET HAVING A HOLE .15" DIA.

MAT<sup>l</sup> BRASS 20 SWG (.0148" THICK)

TO B 9 SPEC 265 (LATEST ISSUE)

FINISH - ELECTRO TINNED THICKNESS NOT LESS THAN .0002"  
ALTERNATIVELY NICKEL PLATING THICKNESS SCALE 1/1

STORES REF N<sup>o</sup> SK/225

NOT LESS THAN .0003"

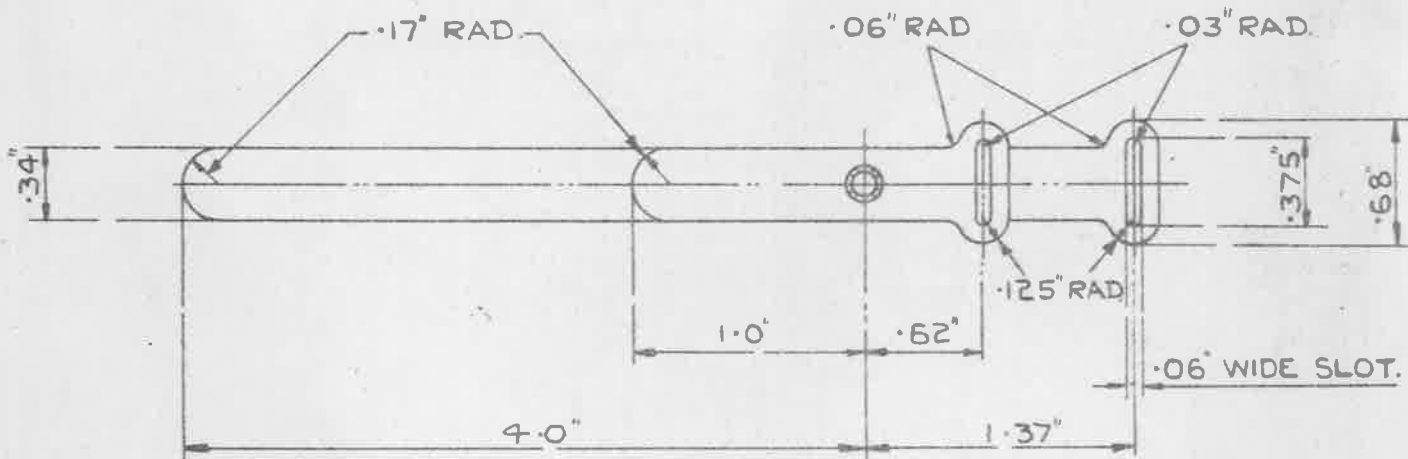
ISSUED BY THE ROYAL AIRCRAFT ESTABLISHMENT	TITLE - CLEAT WIRING BRASS N <sup>o</sup> 1				
	ISSUE N <sup>o</sup>	2			
	ALTERS N <sup>o</sup>				

**OBSOLESCE**—NOT TO BE  
USED IN NEW DESIGN WORK

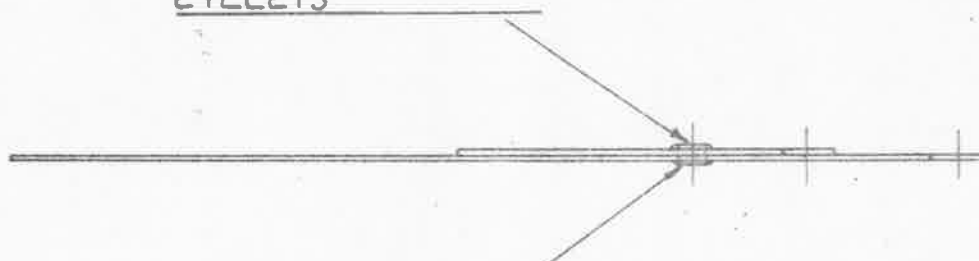
MINISTRY OF  
AIRCRAFT PRODUCTION

AGS. No 1683.

SHEET No 1 No OF SHEETS 1



HOLES IN CLEATS TO SUIT  
EYELETS



CLEATS HELD TOGETHER BY A BRASS  
EYELET HAVING A HOLE .15" DIA.

MAT: - BRASS, 28 S.W.G (.0148" THICK.)

TO B.S. SPEC: 265. (LATEST ISSUE)

FINISH:- ELECTRO-TINNED, THICKNESS NOT LESS THAN .0002"

ALTERNATIVELY, NICKEL PLATING, THICKNESS SCALE: 1/1

STORES REF. No 5K/225

NOT LESS THAN .0003"

ISSUED BY THE ROYAL AIRCRAFT ESTABLISHMENT	TITLE: - CLEAT, WIRING, BRASS, No 1.				DRAWN. <i>[Signature]</i>	TRACED E.M. 299-40
	ISSUE No	+	2 <sup>h</sup> s	3	CHECKED <i>[Signature]</i>	APPROVED. <i>[Signature]</i>
	ALTERS No	700, No 311/491	AS. No AGS/403	MOS/AGS 979		