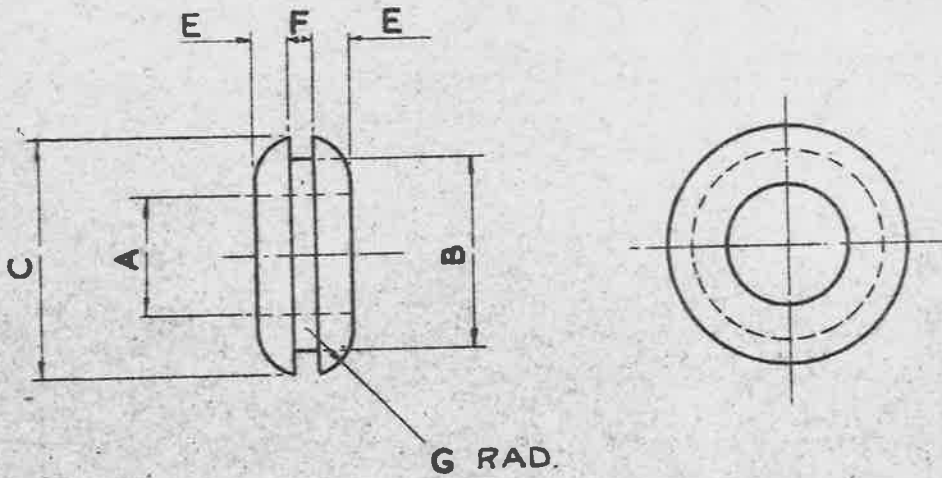


OBSOLESCE REPLACED BY B.S. SPEC: SP 40 OR SP 48

AG.S. 1696.

AS APPROPRIATE FOR NEW DESIGNS. RETAINED ONLY FOR PROVISIONING OF SPARES.

ALL DIMENSIONS ARE IN INCHES.



- NOTES:-
- DIAMETERS A AND B - CONCENTRIC TOLERANCE .020 (F.I.M.)
 - ALL FLASHES AND SPUE TO BE REMOVED.
 - A.G.S. 1696 - * TO BE ENGRAVED IN THE MOULDED CAVITY SO AS TO APPEAR IN RELIEF ON ONE OF THE FLANGE FACES. (* TYPE N°)

TYPE N°	REF. N°	A	B	C	E	F	G
		+0 -.01	+01 -0	±.015	+01 -0	+010 -0	±.01
5	5K-19	$\frac{5}{32}$	$\frac{1}{4}$.375	.11	.063	.06
6	5K-21	$\frac{5}{32}$	$\frac{1}{4}$.375	.08	.125	.06
3	5K-17	$\frac{7}{32}$	$\frac{5}{16}$.438	.06	.063	.06
7	5K-22	$\frac{1}{4}$	$\frac{27}{64}$.578	.13	.094	.17
2	5K-16	$\frac{9}{32}$	$\frac{3}{8}$.594	.11	.063	.12
1	5K-15	$\frac{5}{16}$	$\frac{1}{2}$.625	.10	.063	.12
8	5K-23	$\frac{3}{8}$	$\frac{35}{64}$.703	.11	.156	.06
4	5K-18	$\frac{3}{8}$	$\frac{5}{8}$.813	.11	.063	.12
9	5K-20	$\frac{7}{16}$	$\frac{17}{32}$.750	.14	.063	.06

MATERIAL:- RUBBER TO SPEC: D.T.D. 560, GRADE D, QUALITY Q.

SM 607

TITLE BUSHES. INSULATING RUBBER.	ISSUE	3					
	ALT. N°	AS/AGS 927					
MINISTRY OF SUPPLY	R.A.E. APPROVAL			A.D.S.A.E. APPROVAL			
	SIGNATURE	DATE		SIGNATURE	DATE		
APPLICATIONS FOR A.G.S. SHEETS TO:- ATR.4A. THAMES HOUSE, MILLBANK, S.W.1.	<i>clb R...</i>		1.8.52.	<i>G.A. Wray</i>		8/10/52	
GENERAL INQUIRIES TO:- A.D.S.A.E. THAMES HOUSE, MILLBANK, S.W.1.	SHEET N°	1	A.G.S. N° 1696.				
	N° OF SHEETS	1					

ORIGINAL APPROVAL DATE 13-8-41