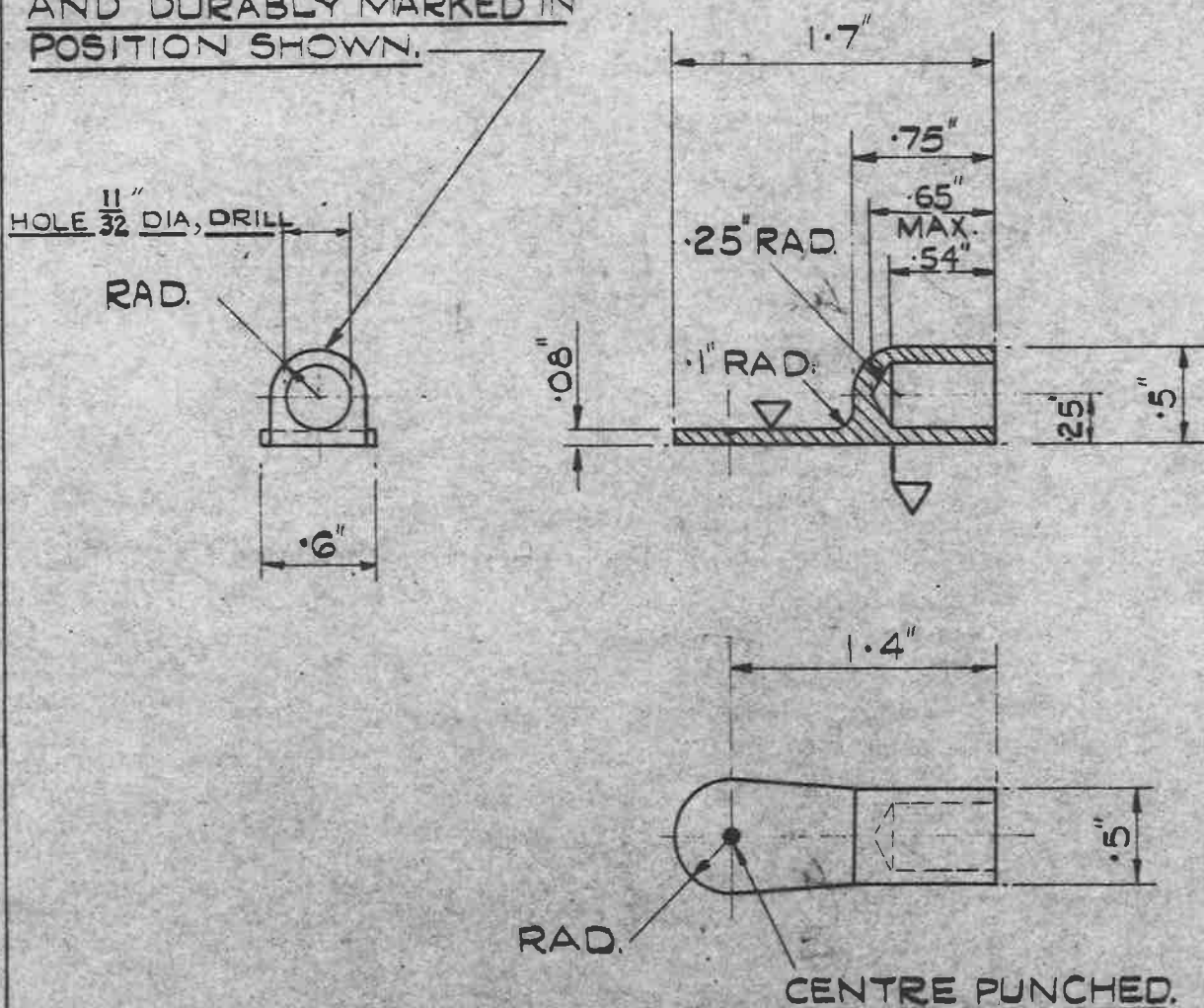


**OBSOLESCE**

A.G.S. 1704 TO BE LEGIBLY AND DURABLY MARKED IN POSITION SHOWN.



MACHINE WHERE MARKED. ▽

MATERIAL:- BRASS TO B.S. SPEC: N<sup>o</sup> 249 (LATEST ISSUE.)  
OR DIE CASTING TO B.S. SPEC: N<sup>o</sup> 1400(B4-C)(LATEST ISSUE)  
OR DROP STAMPING TO B.S. SPEC. N<sup>o</sup> 218 (LATEST ISSUE)

FINISH:- ELECTRO - TIN TO SPEC. Q.T.D. 924 (LATEST ISSUE)

NOTE:- THIS A.G.S. REPLACES DRG. N<sup>o</sup> E. & I. 6052-7.

REF. N<sup>o</sup> 5C/851.

SCALE:- FULL SIZE.

TITLE:- LUG, TERMINAL. N <sup>o</sup> 2.	ISSUE	SM 344				
	ALTN <sup>o</sup>	796				
MINISTRY OF SUPPLY APPLICATIONS FOR A.G.S. SHEETS TO:- A.T.P. 4A, THAMES HOUSE, MILLBANK, S.W.1. GENERAL INQUIRIES TO:- A.D. S.A.E. THAMES HOUSE, MILLBANK, S.W.1.	R.A.E. APPROVAL		AD. S.A.E. APPROVAL			
	SIGNATURE	DATE	SIGNATURE	DATE		
		8.3.50	G.I. Ginter	5/9/51		
	SHEET N <sup>o</sup>	1	A.G.S. N <sup>o</sup> 1704.			
	N <sup>o</sup> OF SHEETS	1				