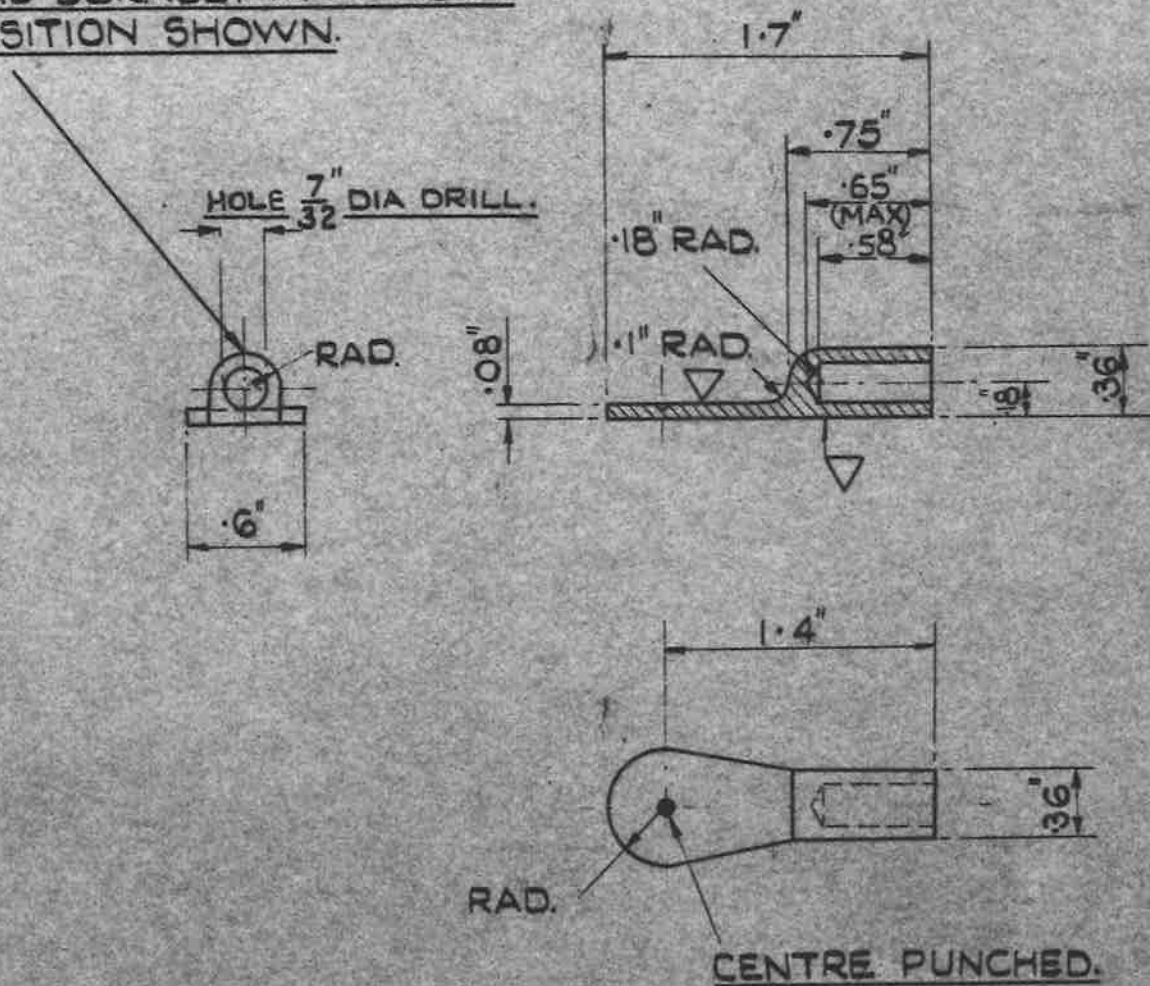


A.G.S. 1705 TO BE LEGIBLY AND DURABLY MARKED IN POSITION SHOWN.



MACHINE WHERE MARKED ∇

MATERIAL:- BRASS TO B.S. SPEC. N^o 249. (LATEST ISSUE)
OR DIE CASTING TO B.S. SPEC. N^o 1400(84-C) (LATEST ISSUE)
OR DROP STAMPING TO B.S. SPEC. N^o 218 (LATEST ISSUE)

FINISH:- ELECTRO - TIN TO SPEC. D.T.D. 924 (LATEST ISSUE)

NOTE:- THIS A.G.S. REPLACES DRG. N^o E & I. 6052-8.

REF. N^o 5C/852

SCALE:- FULL SIZE.

TITLE:- LUG, TERMINAL N^o 3.	ISSUE ^{SM 448} 3				
	ALTN ^o Mod/AGS 79G				
MINISTRY OF SUPPLY APPLICATIONS FOR A.G.S. SHEETS TO:- ATP.4A. THAMES HOUSE, MILLBANK, S.W.1. GENERAL INQUIRIES TO:- A.D.S.A.E. THAMES HOUSE, MILLBANK, S.W.1.	R.A.E. APPROVAL SIGNATURE <i>ASR</i> DATE 8.3.50		AD. S.A.E. APPROVAL SIGNATURE <i>G.T. Yambler</i> DATE 5/9/51		
	SHEET N ^o 1	N ^o OF SHEETS 1	A.G.S. N^o 1705		