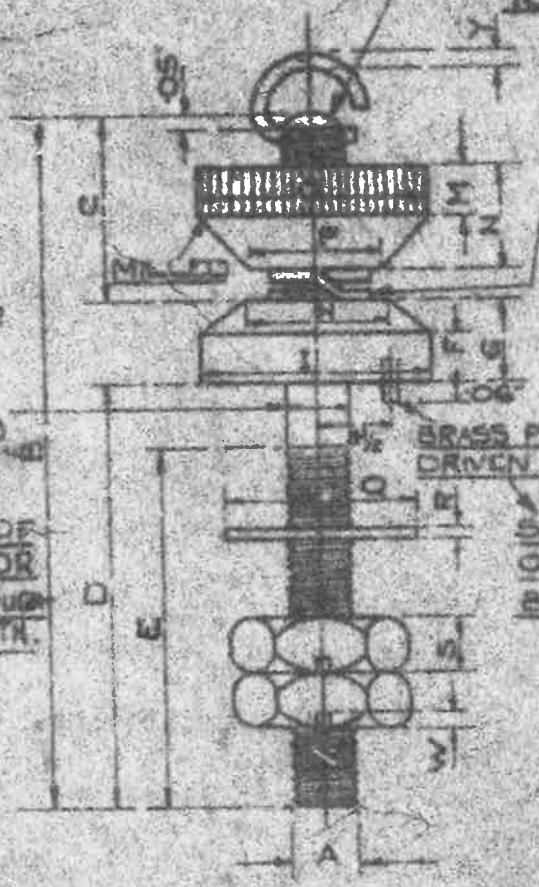


SCREW THREADS ARE TO BE IN ACCORDANCE WITH B.S. REPORT N<sup>o</sup> 33

STD. PHOS. BRONZE SPRING WASHER TO SUIT SIZE OF TERMINAL

14-10-43

WHEN STEM IS MADE AS A SEPARATE PIECE THIS DIA CAN BE THE STANDARD STOCK SIZE OF ROD USED OR SCREWED THROUGH OUT ITS LENGTH.

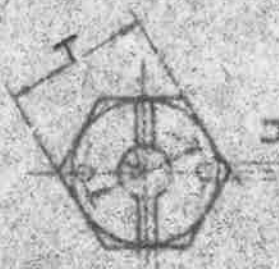


PLAN & SECTION UPPER MILLED NUT



MILLED

SIZE OF PIN -  
 0 TO 6 B.S. TERMINALS 1/8" DIA.  
 8 & 10 3/32"



PLAN

HEXAGONAL NUT

THE STEM & TERMINAL BASE MAY BE MADE IN ONE PIECE OR SEPARATELY IN WHICH CASE THE PARTS MUST BE LOCKED BY PUNCHING OR OTHER APPROVED MEANS.

STORES REF N <sup>o</sup>	SIZE IN	DIMENSIONS													
		BODY													
	A	B	C	D	E	F	G	H	I						
5K/470	0	2.55	0.75	1.50	1.25	0.20	0.30	0.50	0.75						
5K/471	2	2.45	0.65	1.50	1.25	0.20	0.30	0.45	0.70						
5K/472	4	2.05	0.55	1.25	1.00	0.15	0.25	0.35	0.55						
5K/473	6	1.60	0.40	1.00	0.90	0.12	0.20	0.25	0.40						
5K/474	8	1.18	0.30	0.75	0.70	0.09	0.125	0.20	0.25						
5K/475	10	0.85	0.25	0.50	0.45	0.05	0.10	0.15	0.20						
		UPPER MILLED NUT					WASHER					HEXAGONAL NUT			ORING
	A	M	N	O	P	Q	R	S	T	U	Y	W	X	Y	
5K/470	0	0.20	0.40	0.75	0.50	0.65	0.05	0.20	0.55	0.08	0.40	0.06	0.03	0.05	
5K/471	2	0.20	0.35	0.70	0.45	0.55	0.05	0.20	0.50	0.08	0.35	0.06	0.03	0.05	
5K/472	4	0.15	0.30	0.55	0.35	0.50	0.05	0.15	0.40	0.08	0.30	0.05	0.03	0.04	
5K/473	6	0.12	0.20	0.40	0.25	0.40	0.05	0.15	0.30	0.06	0.20	0.05	0.03	0.04	
5K/474	8	0.08	0.14	0.25	0.20	0.25	0.04	0.10	0.20	-	-	0.04	0.03	0.03	
5K/475	10	0.05	0.08	0.20	0.15	0.20	0.03	0.06	0.15	-	-	0.04	0.03	0.02	

ALL ABOVE DIMENSIONS IN INCHES & A TOLERANCE OF 50 OF INCH WILL BE ALLOWED ALL THROUGH

MATERIAL FOR TERMINAL - BRASS  
 O RING - BRASS WIRE  
 FINISH - DULL NIC (CL PLATED)

ISSUED BY DRAWING OFFICE  
 DIRECTORATE OF  
 TECHNICAL DEVELOPMENT  
 MAP

TERMINALS, INSTRUMENT  
 (SINGLE)  
 SERIAL NO  
 DRAWING NO

DRAWN  
 LCO  
 CHECKED

TRACED  
 6-2-43  
 APPROVED