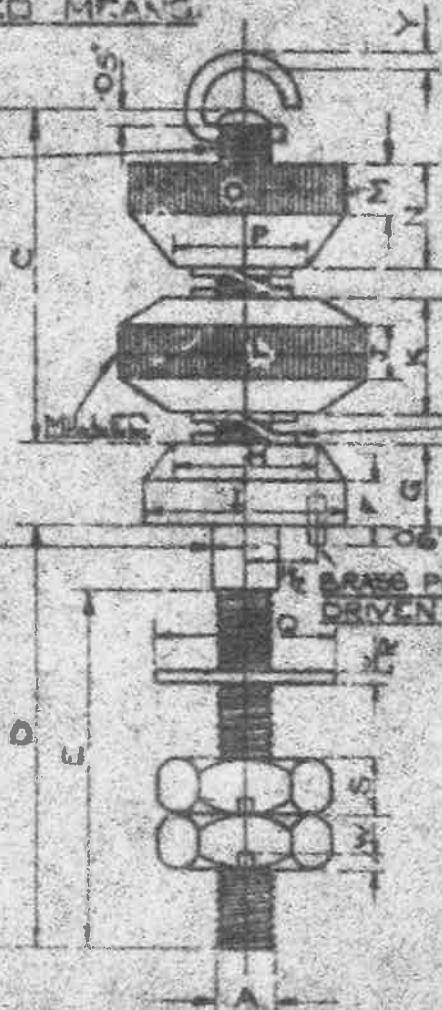


THE STEM TERMINAL BASE MAY BE IN ONE PIECE OR SEPARATELY, IN WHICH CASE THE PARTS MUST BE LOCKED BY PUNCHING OR OTHER APPROVED MEANS.

STD. PHOS. BRONZE SPRING WASHERS TO SUIT SIZE OF TERMINAL.

SCREW THREADS ARE TO BE IN ACCORDANCE WITH B.S. REPORT N293

WHEN STEM IS MADE AS A SEPARATE PIECE, THIS DIA. CAN BE THE STANDARD STOCK SIZE OF ROD USED OR SCREWED THROUGH-OUT ITS LENGTH.

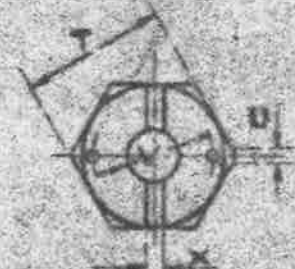


PLAN & SECTION UPPER MILLED NUT



MILLED

SIZE OF PIN 0 TO 6 BA. TERMINALS DIA. 0.10



PLAN HEXAGONAL NUT

STORES SIZE & NO.	DIMENSIONS													
	BODY										LOWER MILLED NUT			
SK/465	A	B	C	D	E	F	G	H	I	J	K	L		
SK/465	0	3.20	1.40	1.50	1.25	0.20	0.30	0.50	0.75	0.20	0.40	0.30		
SK/466	2	3.00	1.20	1.50	1.25	0.20	0.30	0.45	0.70	0.20	0.35	0.75		
SK/467	4	2.55	1.05	1.25	1.00	0.15	0.25	0.35	0.55	0.15	0.30	0.60		
SK/468	6	2.00	0.80	1.00	0.90	0.12	0.20	0.25	0.40	0.13	0.28	0.45		
SK/469	8	1.75	0.60	0.75	0.70	0.09	0.125	0.20	0.25	0.10	0.15	0.28		
SK/972	10	1.05	0.45	0.50	0.45	0.05	0.10	0.15	0.20	0.05	0.10	0.22		
	UPPER MILLED NUT						WASHER			HEXAGONAL NUT				O RING
	A	M	N	O	P	Q	R	S	T	U	V	W	X	Y
SK/465	0	0.20	0.40	0.75	0.50	0.65	0.65	0.20	0.55	0.08	0.40	0.06	0.03	0.06
SK/466	2	0.20	0.35	0.70	0.45	0.55	0.55	0.20	0.50	0.03	0.35	0.06	0.03	0.05
SK/467	4	0.15	0.30	0.55	0.35	0.50	0.05	0.15	0.40	0.03	0.30	0.05	0.03	0.04
SK/468	6	0.12	0.20	0.40	0.25	0.40	0.05	0.15	0.30	0.06	0.20	0.05	0.03	0.04
SK/469	8	0.08	0.14	0.25	0.20	0.25	0.04	0.10	0.20	-	-	0.04	0.03	0.03
SK/972	10	0.05	0.08	0.20	0.15	0.20	0.03	0.06	0.15	-	-	0.04	0.03	0.02

ALL ABOVE DIMENSIONS ARE IN INCHES & A TOLERANCE OF ±0.01 INCH WILL BE ALLOWED ALL THROUGH.

MATERIAL FOR TERMINAL - BRASS
O RING - BRASS WIRE

FINISH - DULL NICKEL PLATED

ISSUED BY (DRAWING OFFICE) DIRECTORATE OF TECHNICAL DEVELOPMENT	TITLE - TERMINALS, INSTRUMENT (DOUBLE)	DRAWN L.C.O.	TRACED 11-9-62
	M.A.P.	CHECKED	APPROVED