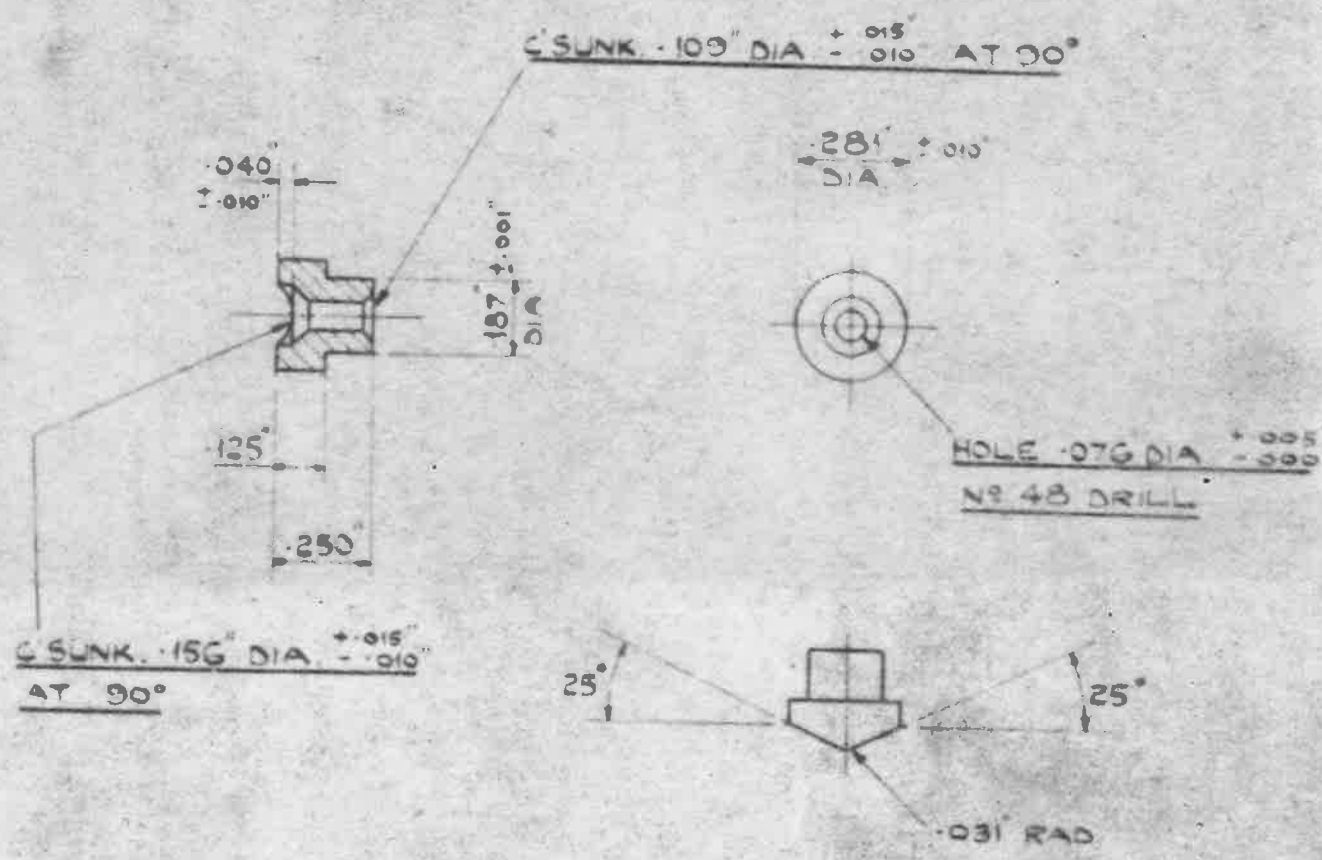


(P)

DIMENSIONALLY THE SAME AS ROTAX. N 7007 & ROLLS. D.18006

MINISTRY OF AIRCRAFT PRODUCTION AGS.N<sup>o</sup> 171  
SHEET N<sup>o</sup> 1 N<sup>o</sup> OF SHEETS

14-8-43  
AGS. 171  
REV. 1933 24



MATERIAL - BRASS

FINISH - ELECTRO TINNED THICKNESS NOT LESS THAN .0002

UNLIMITED DIMENSIONS TO BE WITHIN  $\pm .005$

SCALE - TWICE FULL SIZE

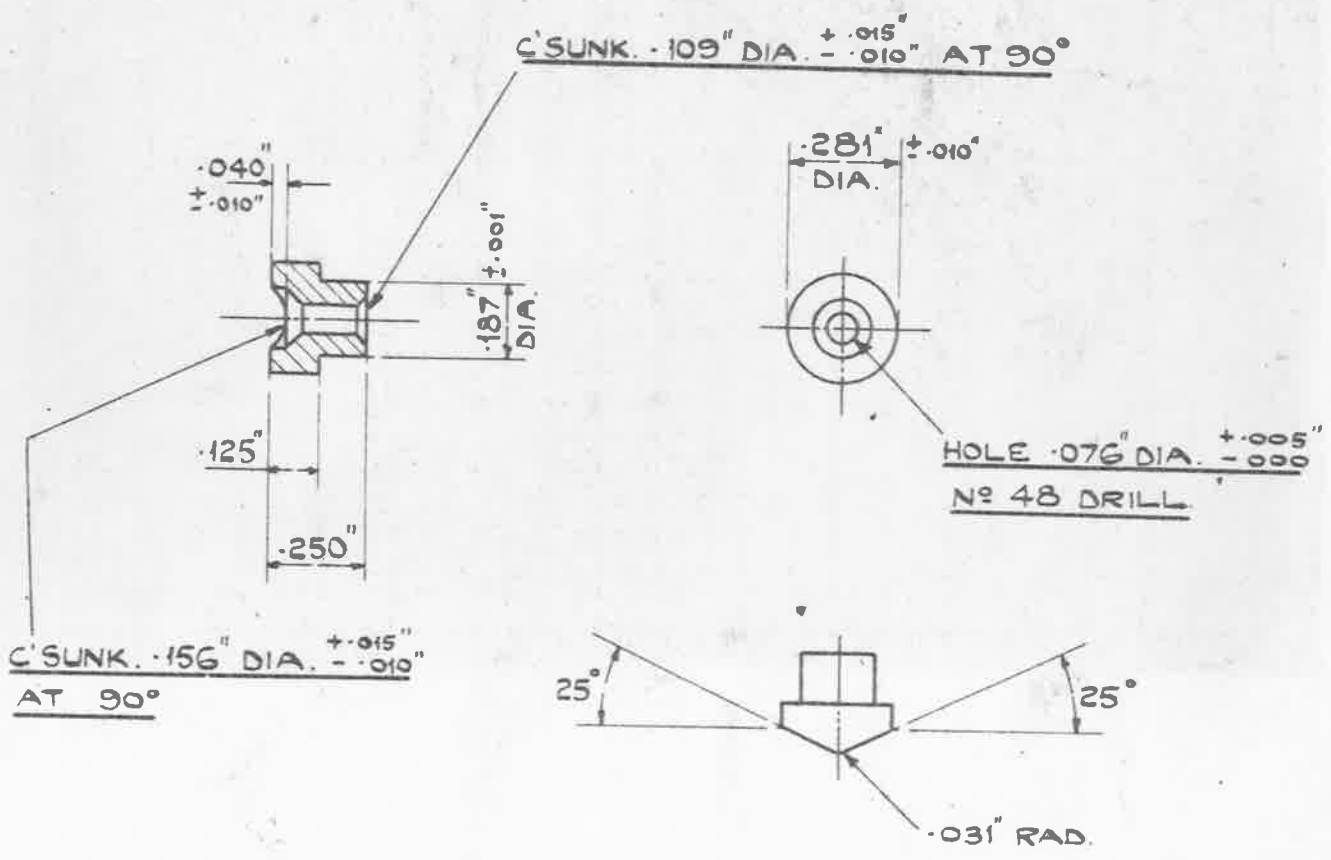
ISSUED BY THE ROYAL AIRCRAFT ESTABLISHMENT	TITLE:- FERRULE-CABLE END.				DRAWN.	TRACED
	ISSUE N <sup>o</sup>	1	2		CHECKED	APPROVED
	ALTERS N <sup>o</sup>				G.L.M.	<i>[Signature]</i>

DIMENSIONALLY THE  
SAME AS ROTAX. N.71007 & ROLLS. D.18008.

MINISTRY OF AIRCRAFT PRODUCTION. **AGS. No 1712**

**SHEET No 1** | **No OF SHEETS 1**

**OBSOLESCE** - NOT TO BE USED  
 IN NEW DESIGN WORK. SEE S.D.M. 267



MATERIAL:- BRASS

FINISH:- ELECTRO-TINNED, THICKNESS NOT LESS THAN .0002"

UNLIMITED DIMENSIONS TO BE WITHIN ±.005"

SCALE:- TWICE FULL SIZE

ISSUED BY THE:- ROYAL AIRCRAFT ESTABLISHMENT	TITLE:- FERRULE-CABLE END. SM780			DRAWN.	TRACED
	ISSUE No	42	3	CHECKED	APPROVED
	ALTER No	780, No 185/497	AS. No 185/497	G.H.M.	1-5-42