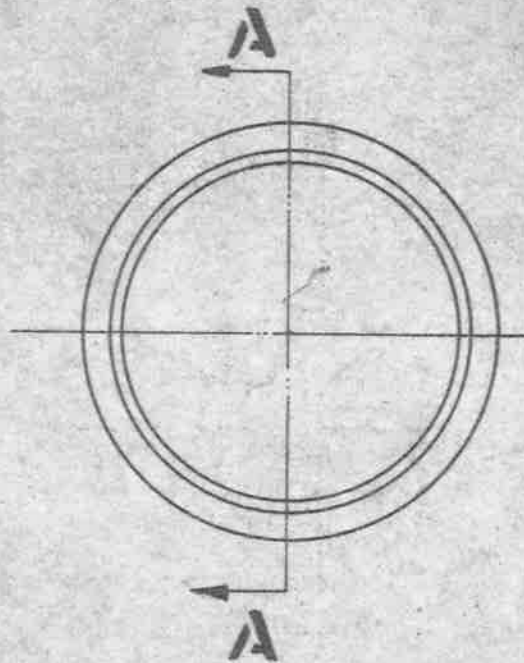
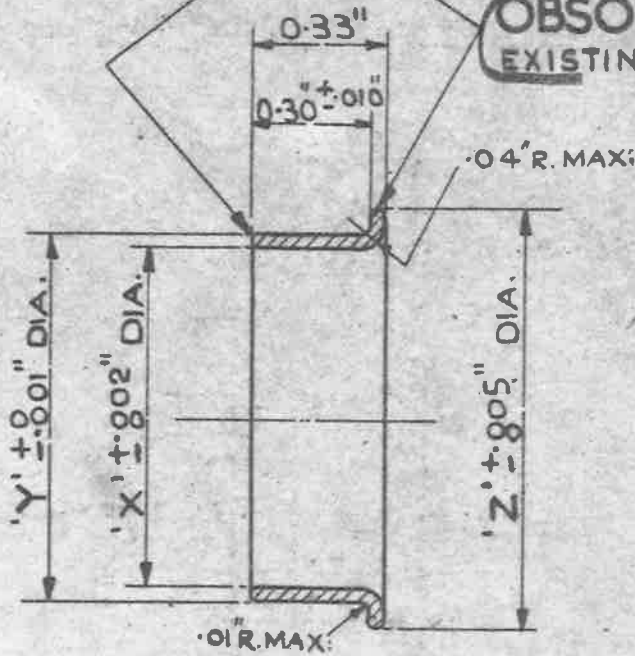


ALL SHARP EDGES TO BE ROUNDED OFF.

**OBSOLESCENT-NO FURTHER MANUFACTURE.  
EXISTING STOCKS MAY BE USED.**



SECTION ON **AA**.

STORES REF.	MARK.	DIM <sup>N</sup> 'X'	DIM <sup>N</sup> 'Y'	DIM <sup>N</sup> 'Z'
5K/195	A. INNER.	0.890"	0.946"	1.08"
5K/196	B. OUTER.	0.970"	1.026"	1.08"

**MATERIAL:- BRASS TUBE. B.S. SPEC: No 885. OR**

**BRASS STRIP B.S. SPEC: No 265 (LATEST ISSUES.)**

**FINISH:- ELECTRO-TINNED, THICKNESS NOT LESS THAN .0002"**

ISSUED BY THE  
ROYAL AIRCRAFT  
ESTABLISHMENT.

TITLE:- SLEEVES, BONDING, METAL BRAIDED  
CABLE, L.T. TYPE 5, CIRCULAR, INNER & OUTER

DRAWN.

*W.P. Snell*

RETRACED  
A.S.T.  
12-11-42

ISSUE No *1-1* ZHS *Z* SM 4872

CHECKED

*James*

APPROVED.

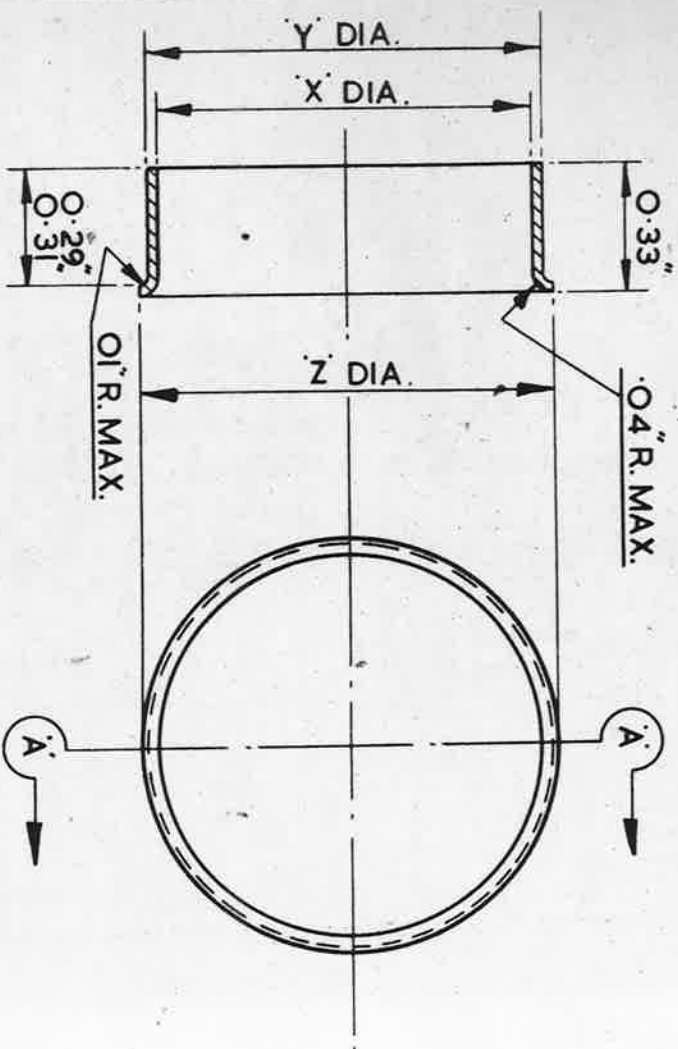
*[Signature]*  
8-12-42

ALTER No MOD IAS No. 853 993  
AG 945246339

SM1098

ISSUE No. 5 F106

MARK	X	Y	Z
A INNER.	.890"	.946"	1.085"
	.892"	.945"	1.080"
B OUTER.	.970"	1.026"	1.085"
	.972"	1.025"	1.080"



SECTION A-A

NOTE:-

NOT TO BE USED ON NEW DESIGNS OF EQUIPMENT (SEE SDM (A) 313.)

FINISH:-

ELECTRO-TINNED, THICKNESS NOT LESS THAN .0002"  
ALL SHARP EDGES TO BE ROUNDED OFF.

USED ON	DESIGNED	DRAWN	TRACED	CHECKED	APPROVED FOR	DATE	REF.	DRAWING OR PART No.	DESCRIPTION	AS DRAWN	OPR HAND UNIT QTY	MATERIAL - REMARKS
	F.A.L.	F.A.L.	F.A.L.	F.A.L.	S.B.A.C.	7.5.63			BRASS SHEET OR BRASS TUBE (ANNEALED)			BS. 265.
					<i>S.M. Davies</i>							BS. 885
												THIRD ANGLE PROJECTION.

ISSUED BY THE SOCIETY OF BRITISH AIRCRAFT CONSTRUCTORS LTD.,  
29, KING STREET, ST. JAMES'S, LONDON, S.W.1.

HT SLEEVES, BONDING, METAL BRAIDED CABLE, L.T. TYPE 5, CIRCULAR INNER & OUTER.

A.G.S. 1722.