

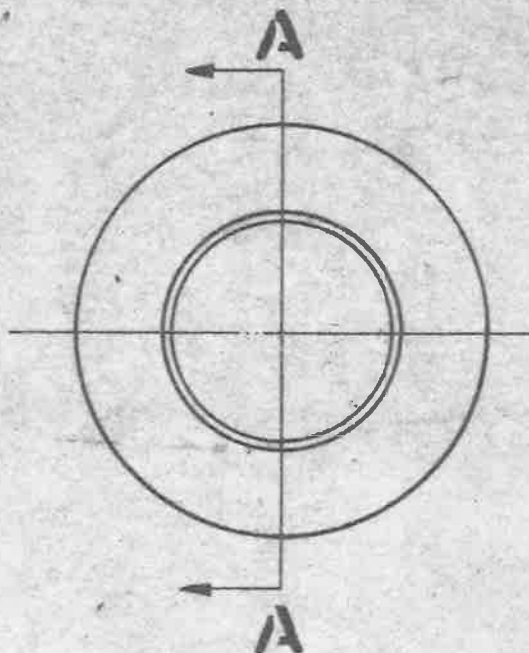
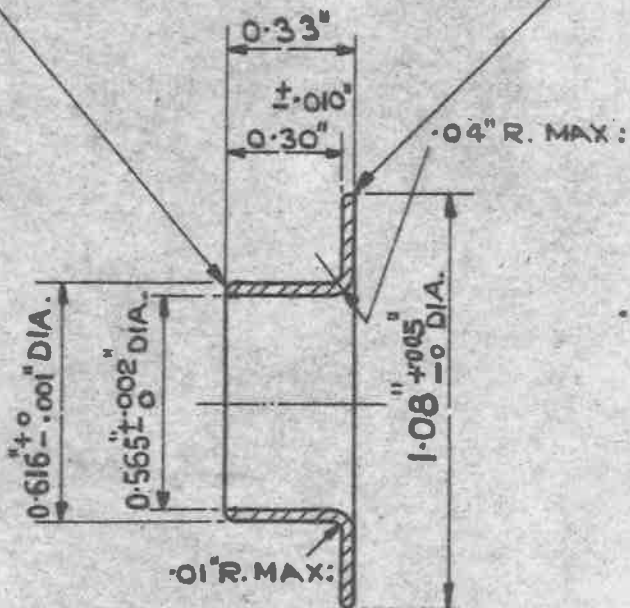
**OBSOLESCE**—NO FURTHER MANUFACTURE.  
EXISTING STOCKS MAY BE USED.

MINISTRY OF  
SUPPLY

AGS N<sup>o</sup> 1723

SHEET N<sup>o</sup> 1 | N<sup>o</sup> OF SHEETS 1

ALL SHARP EDGES TO BE ROUNDED OFF.



SECTION ON **A.A.**

**MATERIAL:**—BRASS STRIP, B.S. SPEC; N<sup>o</sup> 265. (LATEST ISSUE.)

**FINISH:**—ELECTRO-TINNED, THICKNESS NOT LESS THAN .0002"

**STORES REF:** 5K/193.

ISSUED BY THE  
ROYAL AIRCRAFT  
ESTABLISHMENT.

TITLE:—SLEEVES, BONDING, METAL BRAIDED  
CABLE, RT. TYPE 5, CIRCULAR, INNER.

DRAWN.

*M. S. Snell*

TRACED

A.S.T.  
11-11-42

ISSUE N<sup>o</sup>

*2*

*ZHS*

*8*

*31/2/42*

CHECKED

*James*

APPROVED.

*8-12-42*

ALTER N<sup>o</sup>

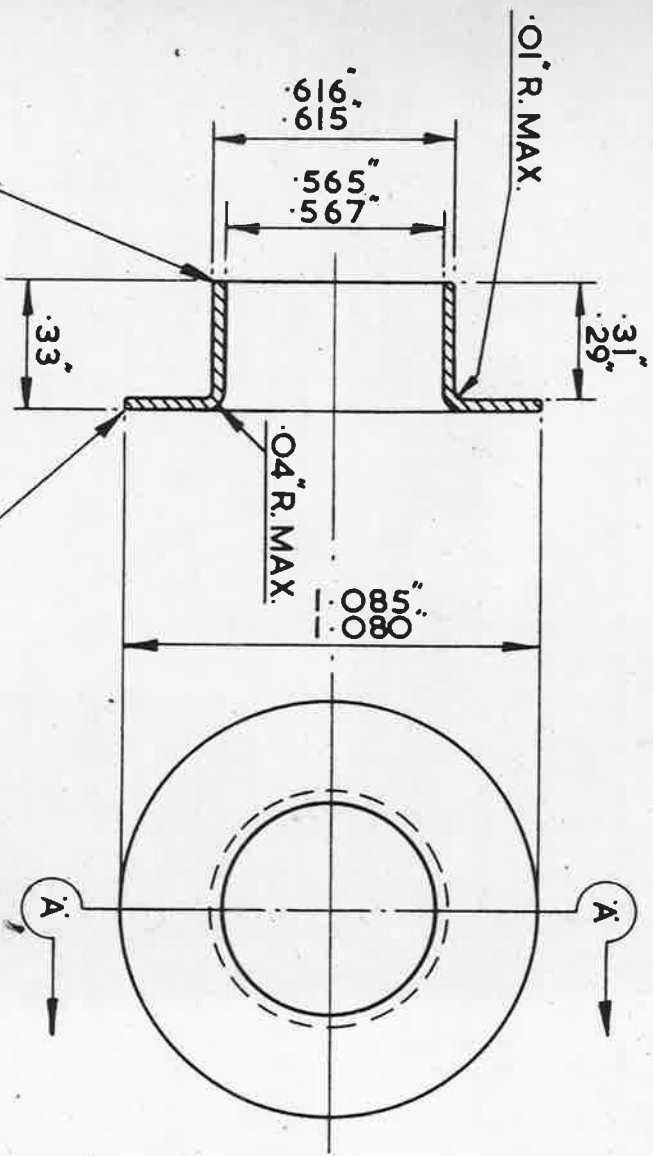
*1*

*AG 345*

*AG 569*

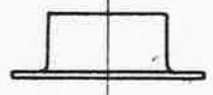
*853*

*993*



SM 1098

FULL SIZE VIEW OF SLEEVE



NOTE:-  
NOT TO BE USED ON NEW DESIGNS  
OF EQUIPMENT (SEE S.D.M. (A) 313)

FINISH:-  
ELECTRO-TINNED, THICKNESS NOT LESS  
THAN .0002"

ISSUE No.	ALT. No.
5	F106

DESIGNED	DRAWN	TRACED	CHECKED	APPROVED FOR	DATE
F.A.L.	F.A.L.	F.A.L.	F.A.L.	<i>S.M. Davies</i> S.B.A.C.	9.5.63

ISSUED BY THE SOCIETY OF BRITISH AIRCRAFT CONSTRUCTORS LTD.,  
29, KING STREET, ST. JAMES'S, LONDON, S.W. 1.

REF.	DRAWING OR PART No.	DESCRIPTION	LIMITS NOT SHOWN	AS DRAWN HAND UNIT QTY	BS. 265.	MATERIAL - REMARKS
		BRASS SHEET				

HT SLEEVES, BONDING, METAL BRAIDED  
CABLE, RT. TYPE 5, CIRCULAR, INNER.

THIRD ANGLE PROJECTION.

A.G.S. 1723.

SIZE B.5-8 x 13