

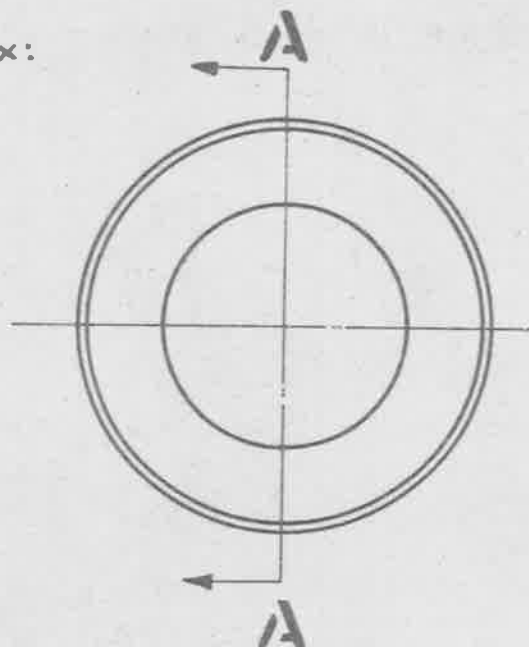
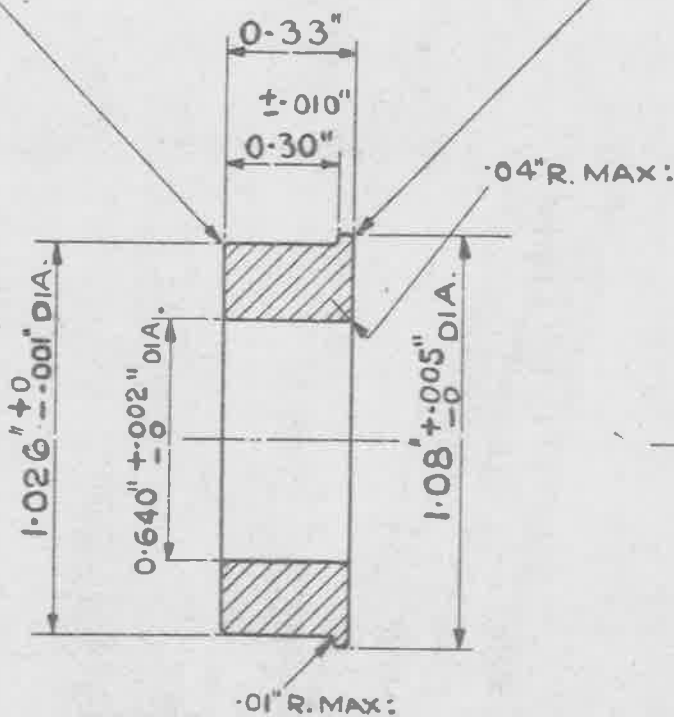
OBSOLESCE - NO FURTHER MANUFACTURE,
EXISTING STOCKS MAY BE USED.

MINISTRY OF
SUPPLY

AGS No 1724

SHEET No. 1. No. OF SHEETS. 1.

ALL SHARP EDGES TO BE ROUNDED OFF.



SECTION ON **A.A.**

MATERIAL:- BRASS TUBE, 0.640" DIA X .022" WALL.

FINISH:-ELECTRO-TINNED, THICKNESS NOT LESS THAN .0002"

STORES REF. 5K/192.

ISSUED BY THE
ROYAL AIRCRAFT
ESTABLISHMENT

TITLE:- SLEEVES, BONDING, METAL BRAIDED
CABLE, RT. TYPE 5, CIRCULAR, OUTER

DRAWN.

W.P. Snell

TRACED

A.S.T.

12-11-42

ISSUE No

1 2 H.S.

3

4

CHECKED

APPROVED.

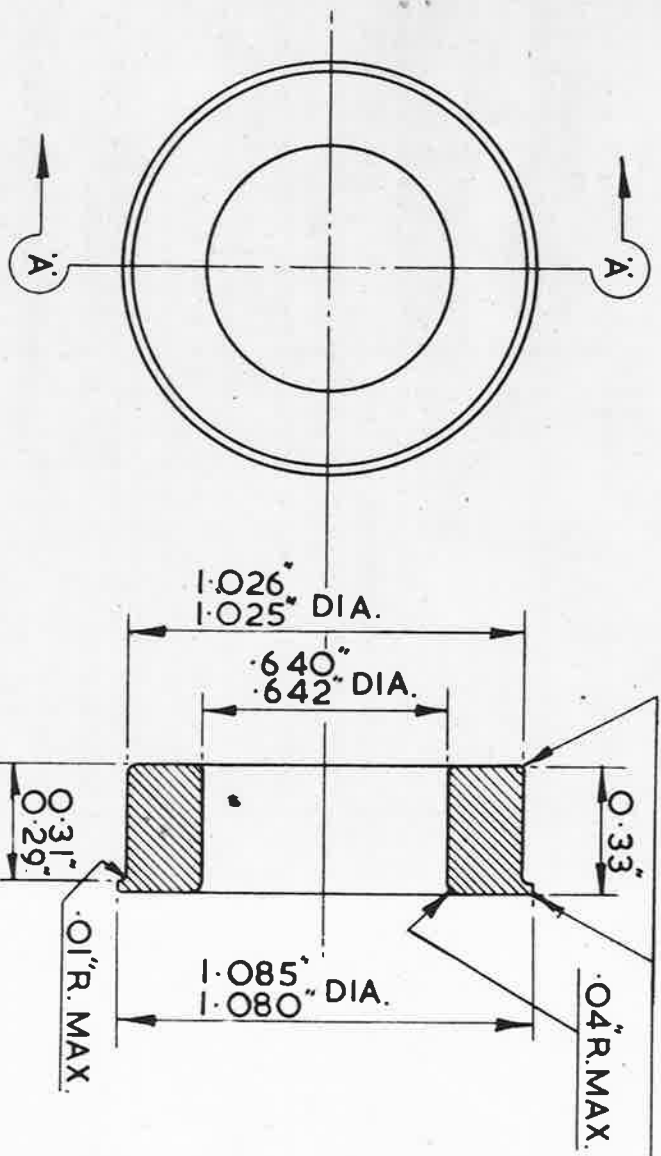
ALTER No

MOD No AS No. 100/100

AG 553/1005

James

8-12-42



SCALE 2:1

SECTION A-A

ALL SHARP EDGES TO BE
ROUNDED OFF

SM 1098

FULL SIZE VIEW OF SLEEVE

NOTE:-

NOT TO BE USED ON NEW DESIGNS
OF EQUIPMENT (SEE SDM (A) 313)

FINISH:-

ELECTRO-TINNED THICKNESS NOT LESS
THAN .0002"

DESIGNED	DRAWN	TRACED	CHECKED	APPROVED FOR S.B.A.C.	DATE
	F.A.L.	F.A.L.	F.A.L.	<i>M. D. Jones</i>	1.5.63

ISSUED BY THE SOCIETY OF BRITISH AIRCRAFT CONSTRUCTORS LTD.,
29, KING STREET, ST. JAMES'S, LONDON, S.W.1.

REF	DRAWING OR PART No.	DESCRIPTION	AS LIMITS NOT SHOWN	AS SCALE NOTED	AS LIMITS NOT SHOWN	UNIT QTY	OPER HAND	MATERIAL - REMARKS
		BRASS ROD OR						BS. 249
		BRASS SHEET OR						BS. 265
		BRASS TUBE (ANNEALED)						BS. 885
								THIRD ANGLE PROJECTION.

SLEEVES, BONDING, METAL BRAIDED CABLE,
RT. TYPE S, CIRCULAR, OUTER.

AGS. 1724

ISSUE	ALT. No.
5	F106