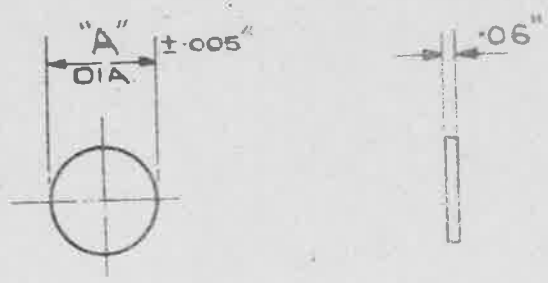


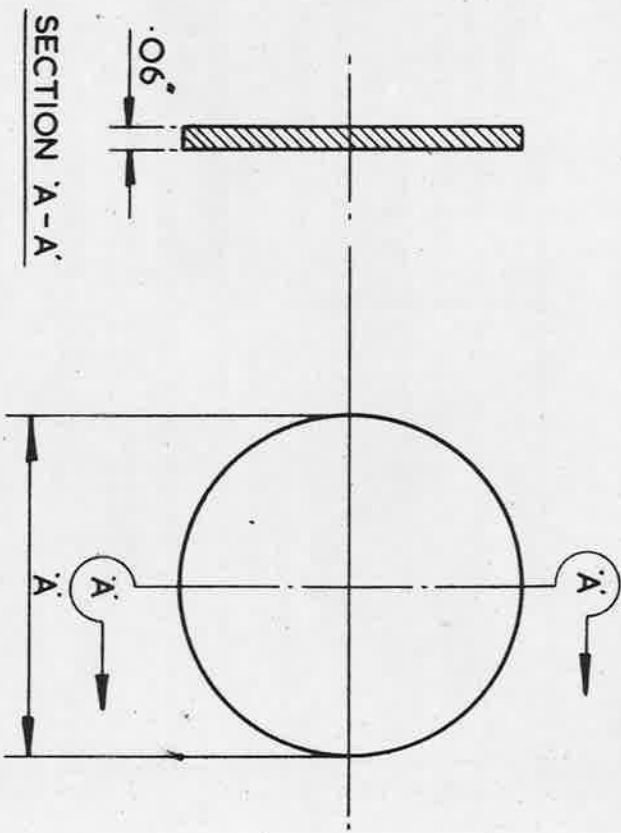
**OBSOLESCE**  
AVAILABLE AS REPLACEMENTS  
FOR EXISTING DESIGNS ONLY.



MARK	DIA. "A"	REF. No
1	.565"	5K/2374
2	.685"	5K/2400
3	.875"	5K/

**MATERIAL:- MILD STEEL TO B.S. SPEC: 5007/214.**  
**FINISH:- CADMIUM PLATED TO SPEC. DTD 904, (LATEST ISSUE).**

MINISTRY OF SUPPLY APPLICATIONS FOR A.G.S. SHEETS TO A.T.P.4, CHESSINGTON, SURREY GENERAL ENQUIRIES TO:- A.D/8.A-E, 57 GILES COURT, 1-13 57 GILES HIGH STREET, LONDON, W.C.2	<b>TITLE:- BLANKING DISCS.</b> (FOR USE UNDER GLAND NUTS WHERE CABLE SLEEVES ARE NOT FITTED.) 517629			DRAWN. <i>CJR.</i>	TRACED A.S.T. 11-12-42.
	ISSUE No 1 2 3 4 5	ALTERS No No/456 AGS/170 AGS/422 563	No/456 AGS/170 AGS/422 563	No/456 AGS/170 AGS/422 563	CHECKED <i>[Signature]</i>



MARK	DIA. 'A'
	$\pm .005$
1	.565"
2	.685"
3	.875"

SM1098

ISSUE	7	ALT. No.	F106
-------	---	----------	------

**NOTE:-**

NOT TO BE USED ON NEW DESIGNS OF EQUIPMENT (SEE SDM (A) 313)

USED ON			REF.		DRAWING OR PART No.		DESCRIPTION		AS DRAWN UNIT QTY	OFF HAND	MATERIAL - REMARKS	
DESIGNED	F.A.L.	TRACED	F.A.L.	CHECKED	F.A.L.	APPROVED FOR S.B.A.C.	DATE	HT	PT	CADMIUM PLATED TO SCALE	LIMITS NOT SHOWN	THIRD ANGLE PROJECTION.
ISSUED BY THE SOCIETY OF BRITISH AIRCRAFT CONSTRUCTORS LTD.,							MILD STEEL.		BS.1449.			
29, KING STREET, ST. JAMES'S, LONDON, S.W. 1.							BLANKING DISCS. (FOR USE UNDER GLAND NUTS WHERE CABLE SLEEVES ARE NOT FITTED)		A.G.S. 1725.			