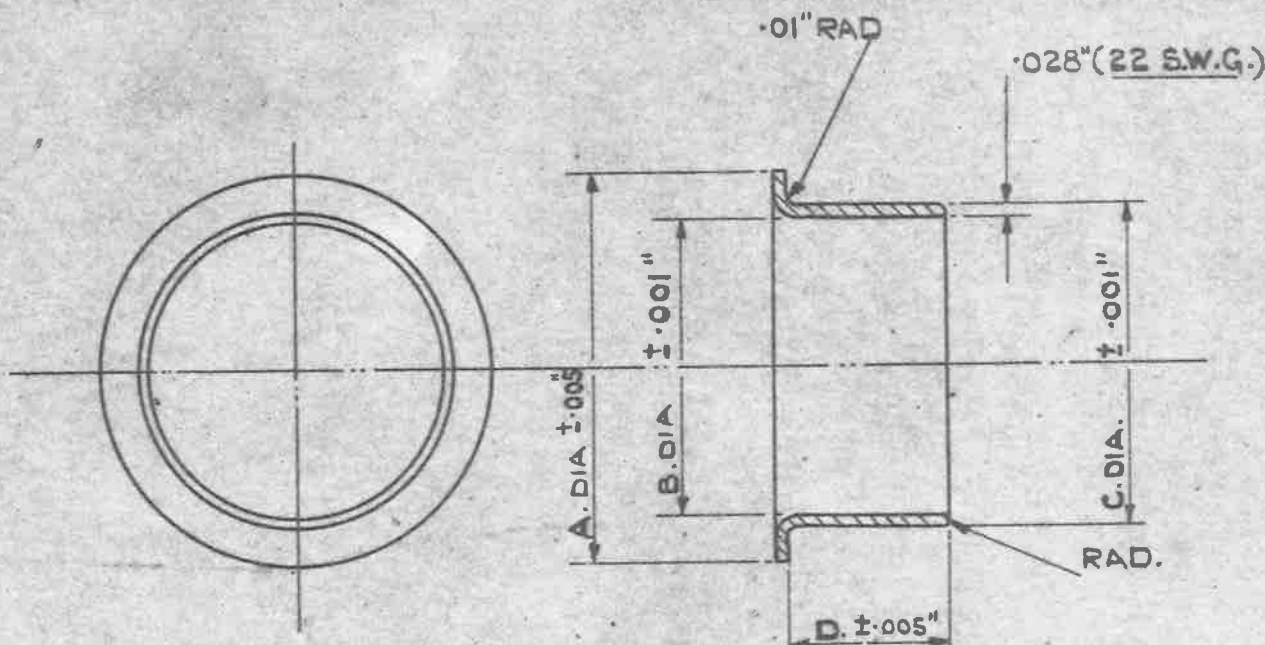


OBSOLESCE - NO FURTHER MANUFACTURE.
EXISTING STOCKS MAY BE USED.

MINISTRY OF
SUPPLY.

AGS. No 1726

SHEET No 1 | No OF SHEETS 1



ALL SHARP EDGES TO BE ROUNDED OFF.

STORES REF. NO	MARK	A	B	C	D	REMARKS.
5K/2380	1	.90"	-	.676"	.42"	INNER SLEEVE REPLACES DRG No: E11.11497-1-2
5K/2381	2	.90"	.70"	-	.47"	OUTER SLEEVE
5K/189	3	.50"	-	.346"	.30"	INNER SLEEVE REPLACES M.V. DRG No 5028411-2
5K/188	4	.50"	.370"	-	.30"	OUTER SLEEVE " " -1
5K/191	5	.40"	-	.256"	.30"	INNER SLEEVE " " -4
5K/190	6	.40"	.280"	-	.30"	OUTER SLEEVE " " -3

MATERIAL :- BRASS TO B.S. SPEC. 249. (LATEST ISSUE)

OR TUBE TO B.S. SPEC: 886. (LATEST ISSUE)

FINISH :- ELECTRO-TINNED, THICKNESS NOT LESS THAN .0002"

ISSUED BY THE
ROYAL
AIRCRAFT
ESTABLISHMENT

TITLE:—SLEEVES, BONDING, METAL BRAIDED
CABLE, L.T. TYPE 6, CIRCULAR, INNER & OUTER

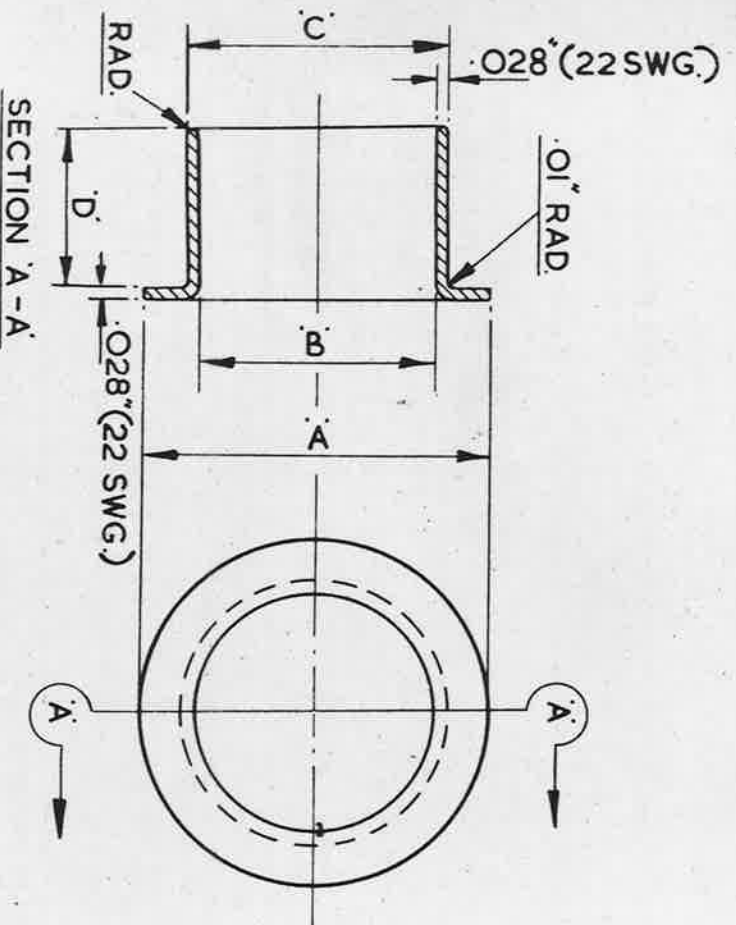
ISSUE NO 4
ALTER NO 1
MOS NO 148
AGS NO 853
AS/AS 853
MOD/25 993

DRAWN.
C.R.B.

CHECKED
K.T.

TRACED
A.S.T.
8-12-42.

APPROVED
K.T.



MARK	A	B	C	D	REMARKS
	$\pm .005$	$\pm .001$	$\pm .001$	$\pm .005$	
1	.90"	—	.676"	.42"	INNER
2	.90"	.70"	—	.47"	OUTER
3	.50"	—	.346"	.30"	INNER
4	.50"	.370"	—	.30"	OUTER
5	.40"	—	.256"	.30"	INNER
6	.40"	.280"	—	.30"	OUTER

NOTE:-

NOT TO BE USED ON NEW DESIGNS OF EQUIPMENT (SEE SDM(A) 313)
 ALL SHARP EDGES TO BE ROUNDED OFF

FINISH:-

ELECTRO-TINNED, THICKNESS NOT LESS THAN .0002"

SM 1098

ISSUE No. 6
 ALT. No. F106

DESIGNED	DRAWN	TRACED	CHECKED	APPROVED FOR	DATE
	F.A.L.	F.A.L.	F.A.L.	S.B.A.C. <i>S. Matthews</i>	7.5.63

ISSUED BY THE SOCIETY OF BRITISH AIRCRAFT CONSTRUCTORS LTD.,
 29, KING STREET, ST. JAMES'S, LONDON, S.W.1.

REF.	DRAWING OR PART No.	DESCRIPTION	LIMITS NOT SHOWN	AS DRAWN HAND UNIT QTY	OPR MATERIAL - REMARKS
		BRASS ROD OR			BS. 249.
		BRASS TUBE ANNEALED			BS. 885.
HT	PT	AS ABOVE	SCALE		THIRD ANGLE PROJECTION.

SLEEVES, BONDING, METAL BRAIDED CABLE.
 L.T. TYPE 6, CIRCULAR, INNER & OUTER.

A.G.S. 1726.