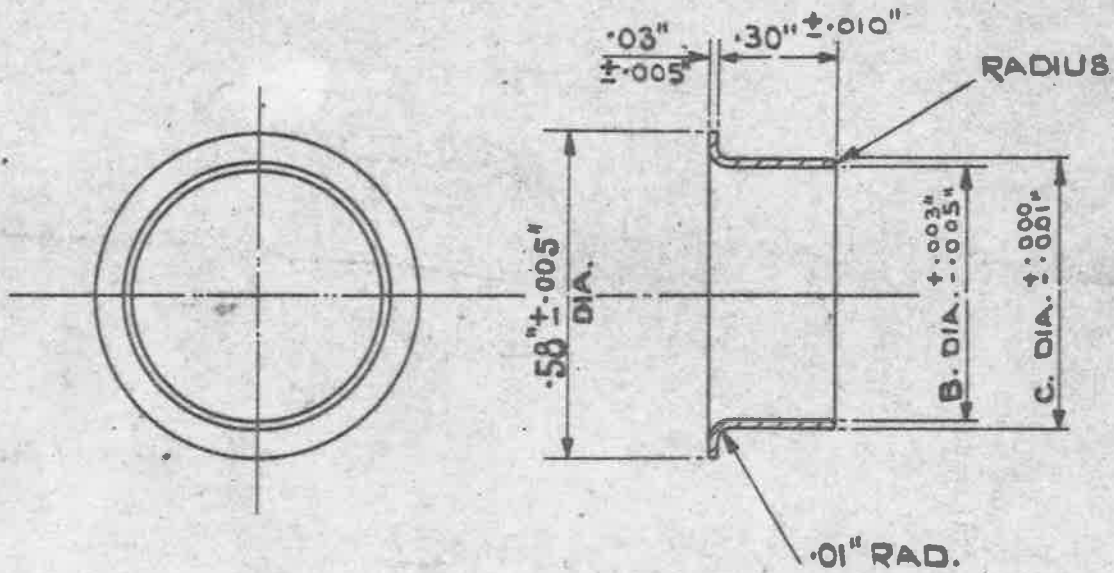


**OBSOLESCE** - NO FURTHER MANUFACTURE.  
EXISTING STOCKS MAY BE USED.

MINISTRY OF  
SUPPLY.

AGS. No 1727

SHEET No 1 | No OF SHEETS 1



ALL SHARP EDGES TO BE ROUNDED OFF

| STORES REF: | MARK | B     | C     | REMARKS.                     |
|-------------|------|-------|-------|------------------------------|
| SK/ 2382.   | 1    | .400" | .451" | REPLACES DRG. NO EBI 5894-1. |
| SK/ 2383.   | 2    | .353" | .404" | REPLACES DRG. NO EBI 7759-4  |

MATERIAL :- BRASS TO B.S. SPEC. 249 (LATEST ISSUE)

OR TUBE TO B.S. SPEC. 886 (LATEST ISSUE)

FINISH :- ELECTRO-TINNED, THICKNESS NOT LESS THAN .0002"

ISSUED BY THE  
ROYAL  
AIRCRAFT  
ESTABLISHMENT.

TITLE:-- SLEEVES. BONDING, METAL BRAIDED  
CABLE, L.T. TYPE 7, CIRCULAR, INNER

DRAWN.  
C.R.B.

TRACED  
A.S.T.  
7-12-42.

ISSUE No

1-2 HS 3 4

CHECKED

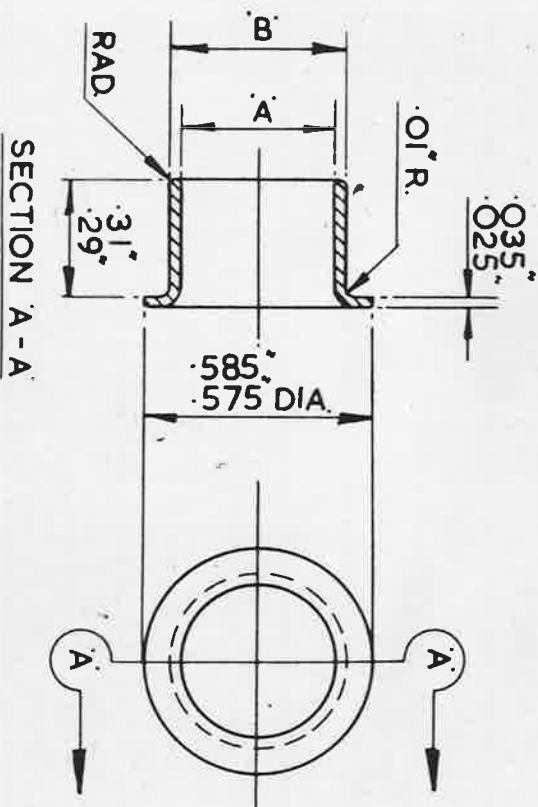
APPROVED

ALTERS No

1-2 HS 3 4

J.S.K.

3



| MARK | A             | B             |
|------|---------------|---------------|
| 1    | .395,<br>.403 | .451,<br>.450 |
| 2    | .348,<br>.356 | .404,<br>.403 |

**NOTE:-**  
 NOT TO BE USED ON NEW DESIGNS OF EQUIPMENT. (SEE SDM (A) 313)

**FINISH:-**  
 ALL SHARP EDGES TO BE ROUNDED OFF.  
 ELECTRO-TINNED THICKNESS NOT LESS THAN .0002"

SM1099  
 ISSUE No. 6  
 ALT. No. F106

| USED ON | DESIGNED | DRAWN  | TRACED | CHECKED | APPROVED FOR                   | DATE   | HT | PT | AS ABOVE | SCALE | LIMITS NOT SHOWN | THIRD ANGLE PROJECTION. | UNIT QTY | AS DRAWN | OPP HAND | MATERIAL - REMARKS |
|---------|----------|--------|--------|---------|--------------------------------|--------|----|----|----------|-------|------------------|-------------------------|----------|----------|----------|--------------------|
|         |          | F.A.L. | F.A.L. | F.A.L.  | S.B.A.C.<br><i>[Signature]</i> | 9.5.63 |    |    |          |       |                  |                         |          |          |          | B.S. 249           |
|         |          |        |        |         |                                |        |    |    |          |       |                  |                         |          |          |          | B.S. 885           |

ISSUED BY THE SOCIETY OF BRITISH AIRCRAFT CONSTRUCTORS LTD.,  
 29, KING STREET, ST. JAMES'S, LONDON, S.W. 1.

SLEEVES, BONDING, METAL BRAIDED CABLE,  
 L.T. TYPE 7, CIRCULAR, INNER.

A.G.S. 1727.