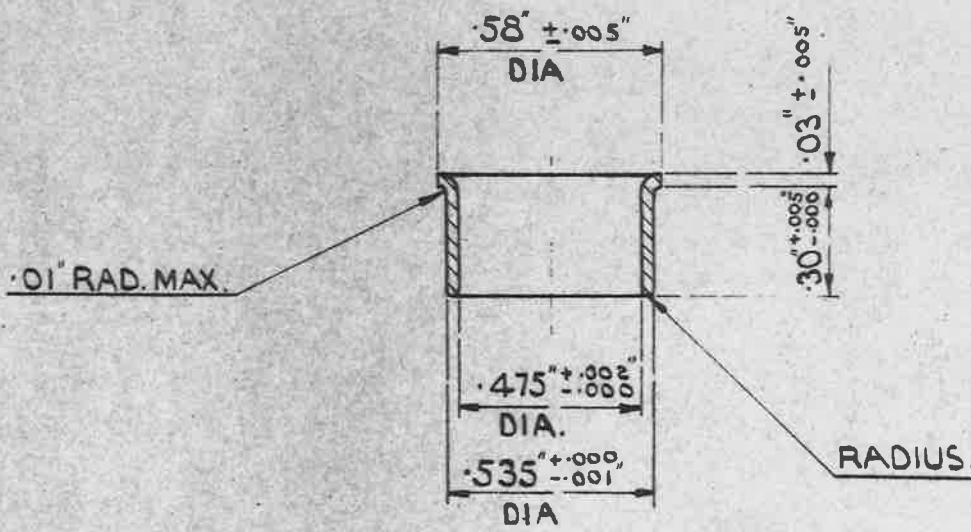
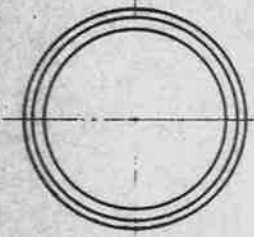


19-7-43
AGS 488-169



ALL SHARP EDGES TO BE ROUNDED OFF.

MATERIAL: BRASS.

FINISH: ELECTRO-TINNED, THICKNESS NOT LESS THAN .0002"

NOTE: THIS A.G.S. SHEET REPLACES
DRG. N^o E&I. 5894-2

STORES REF. N^o 5K/2384.

SCALE 2/1.

ISSUED BY THE
ROYAL AIRCRAFT
ESTABLISHMENT

TITLE - SLEEVES, BONDING, METAL BRAIDED
CABLE, LT. TYPE 7, CIRCULAR, OUTER.

DRAWN
C.R.B.

TRACED
JRS 9-12-42.

ISSUE N ^o	1	2	3
ALTER N ^o			
DRG N ^o	AGS 488	AGS 390	853

CHECKED
V.S.L.

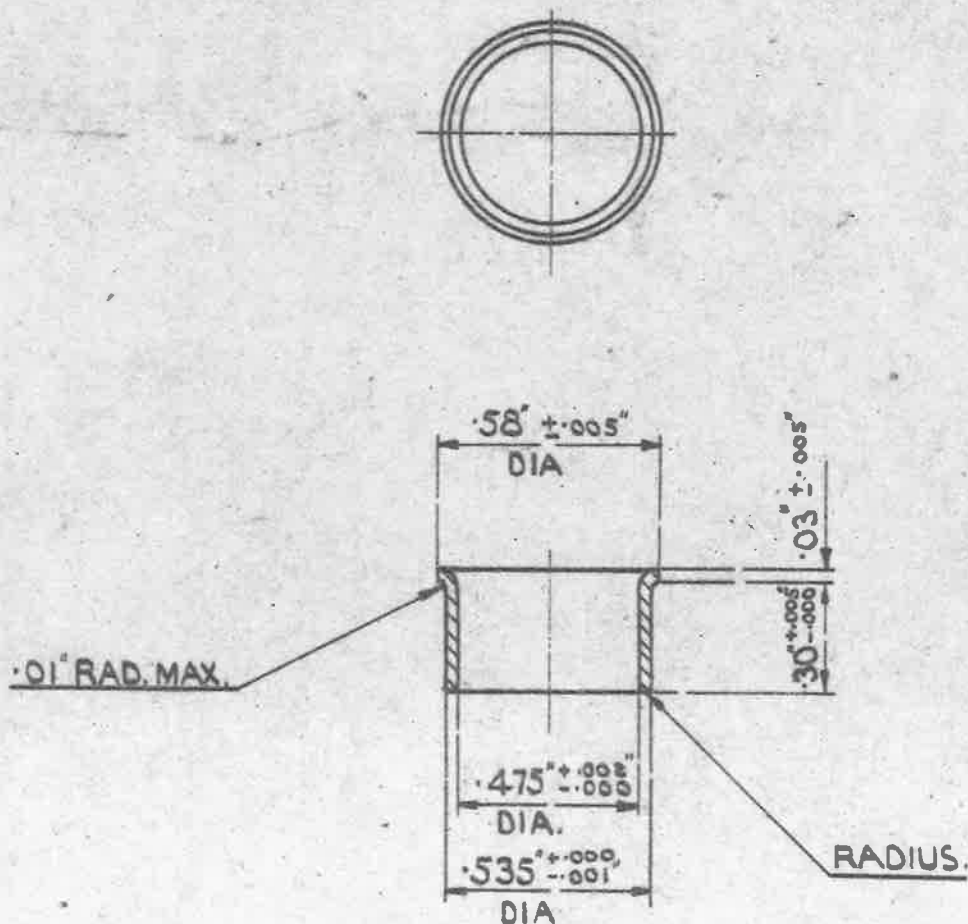
APPROVED
JRS

OBSOLESCE - NO FURTHER MANUFACTURE.
EXISTING STOCKS MAY BE USED.

MINISTRY OF
SUPPLY

AGS. No 1728.

SHEET No 1. No OF SHEETS 1.



ALL SHARP EDGES TO BE ROUNDED OFF.

MATERIAL: BRASS.

FINISH: ELECTRO-TINNED. THICKNESS NOT LESS THAN .0002"

NOTE: THIS A.G.S. SHEET REPLACES.

DRG. No EAI. 5894-2

STORES REF. No 5K/2384.

SCALE 2/1.

ISSUED BY THE
ROYAL AIRCRAFT
ESTABLISHMENT.

TITLE:- SLEEVES, BONDING, METAL BRAIDED
CABLE, L.T. TYPE 7, CIRCULAR, OUTER.

DRAWN.

C. R. B.

TRACED

J.R.O. 9-12-42.

ISSUE No

1 2 3 4

CHECKED

V.S.R.

APPROVED.

J.R.O. 9-12-42

ALTER No

AGS 488 AGS 390 853 993