

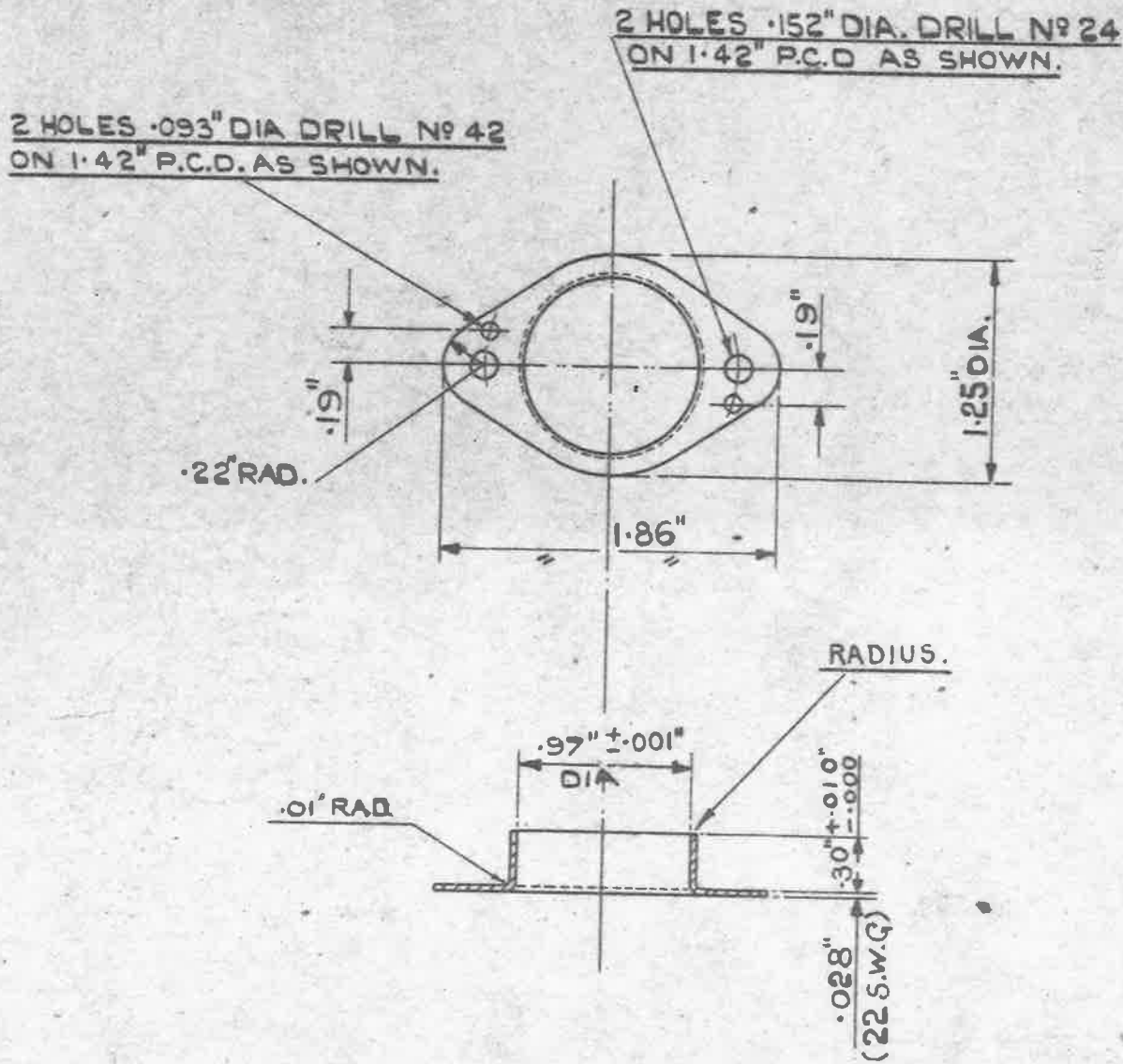
OBSOLESCE - NO FURTHER MANUFACTURE.
EXISTING STOCKS MAY BE USED.

MINISTRY OF
AIRCRAFT
PRODUCTION.

AGS. No 1731

SHEET No 1 No OF SHEETS 1

SIG 22. 1942. 169



MATERIAL:- BRASS.

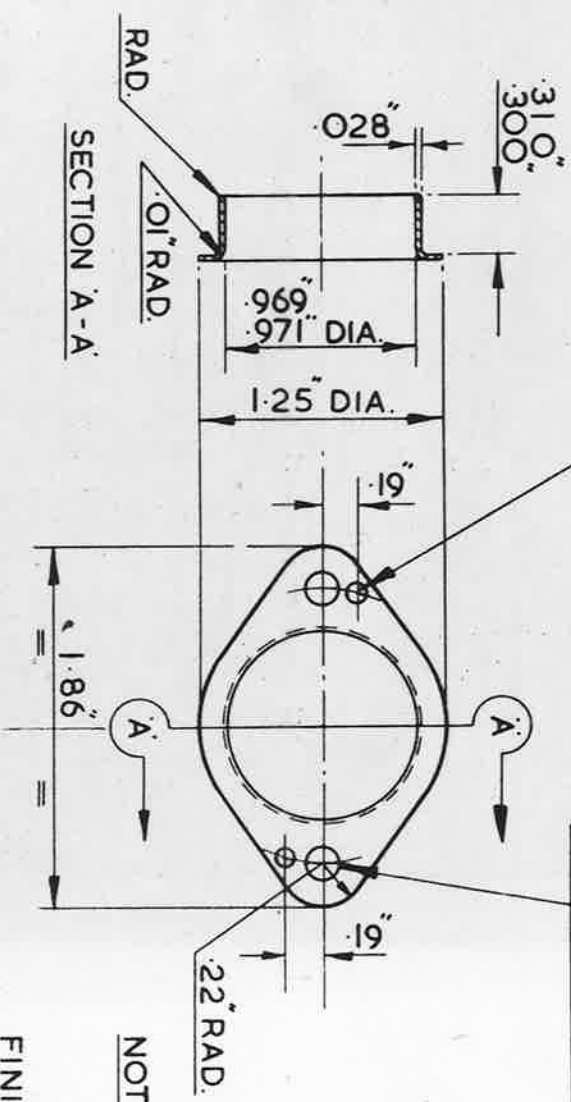
FINISH:- ELECTRO-TINNED, THICKNESS NOT LESS THAN .0002"

NOTE:- THIS A.G.S. PART
REPLACES DRG. No (E.E. 13213-6.

ISSUED BY THE ROYAL AIRCRAFT ESTABLISHMENT.	TITLE:- SLEEVE, OUTER, CIRCULAR (FOR CABLE ELECTRIC, L.T., METAL BRAIDED.)		DRAWN. C.R.B.	TRACED A.S.T. 8-12-42.
	ISSUE No	42	SM 8/2	CHECKED
	ALTER No		3	APPROVED
	MOB No	AS No	MOB No	
	A.G. No	468	AGS No	993

2 - HOLES DRILL No.42 (.093" DIA.)
ON 1.42" P.C.D. AS SHOWN.

2 - HOLES DRILL No.24 (.152" DIA.)
ON 1.42" P.C.D. AS SHOWN.



NOTE:-

NOT TO BE USED ON NEW DESIGNS OF
EQUIPMENT (SEE S.D.M (A) 313)

FINISH:-

ELECTRO-TINNED, THICKNESS NOT LESS
THAN .0002"

SM 1099	ISSUE No.	4
	ALT. No.	F106

USED ON												
DESIGNED	DRAWN	TRACED	CHECKED	APPROVED FOR	DATE	REF.	DRAWING OR PART No.	DESCRIPTION	LIMITS NOT SHOWN	AS DRAWN UNIT	OPP HAND QTY	MATERIAL - REMARKS
	F.A.L.	F.A.L.	F.A.L.	S.B.A.C.	7.5.63			BRASS SHEET. 22 SWG.				BS.265.
												THIRD ANGLE PROJECTION.
ISSUED BY THE SOCIETY OF BRITISH AIRCRAFT CONSTRUCTORS LTD., 29, KING STREET, ST. JAMES'S, LONDON, S.W.1.						SLEEVE, OUTER, CIRCULAR (FOR CABLE ELECTRIC, LT. METAL BRAIDED)						A.G.S. 1731.