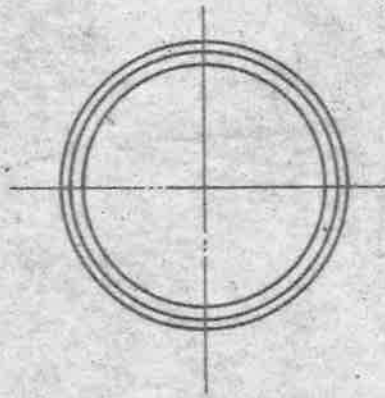
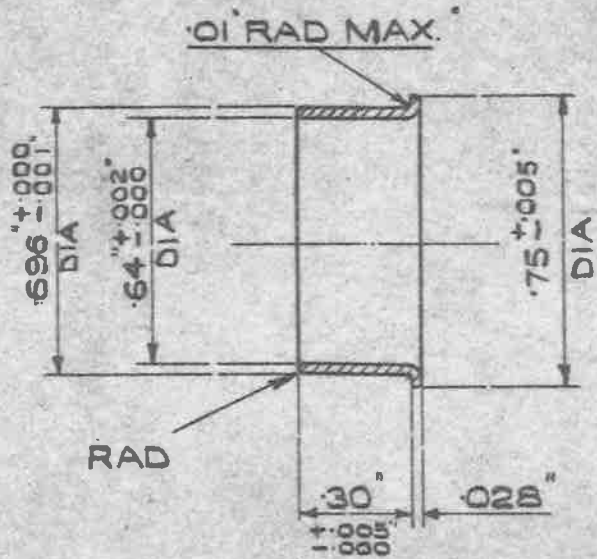


OBSOLESCE - NO FURTHER MANUFACTURE.
EXISTING STOCKS MAY BE USED.

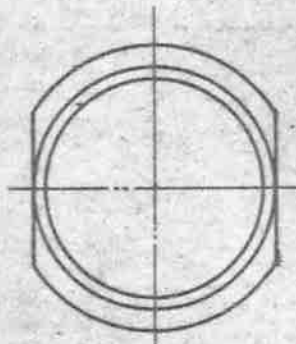
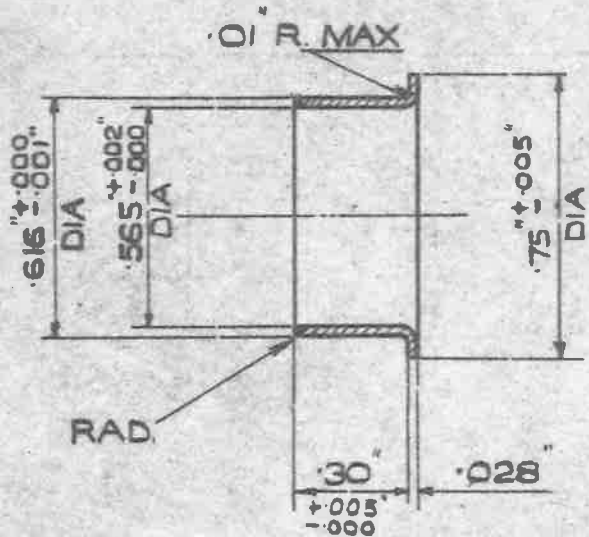
MINISTRY OF
SUPPLY

AGS. No 1732

SHEET No 1 / No OF SHEETS 1



OUTER SLEEVE, MK 1.
REF: - 5K/2387.



INNER SLEEVE MK 2
REF: - 5K/2386.

SHARP EDGES TO BE ROUNDED OFF

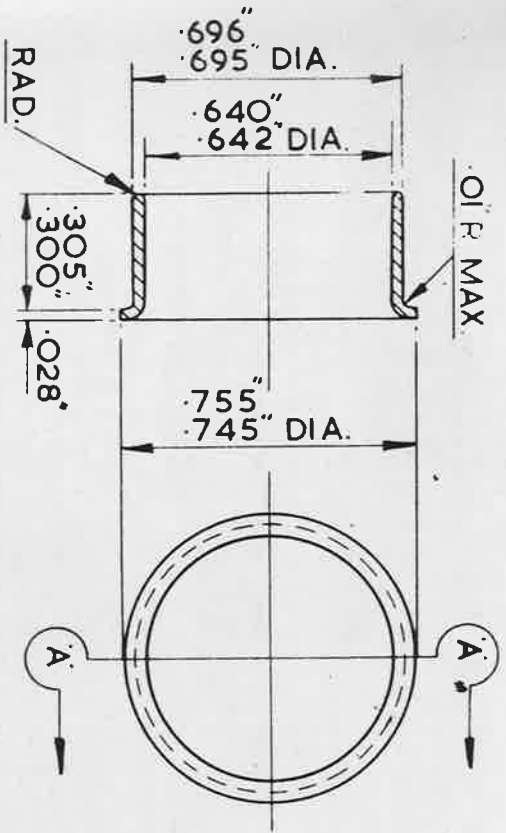
MATERIAL :- BRASS TO B.S. SPEC. 249. (LATEST ISSUE.)

OR TUBE TO B.S. SPEC. 886. (LATEST ISSUE.)

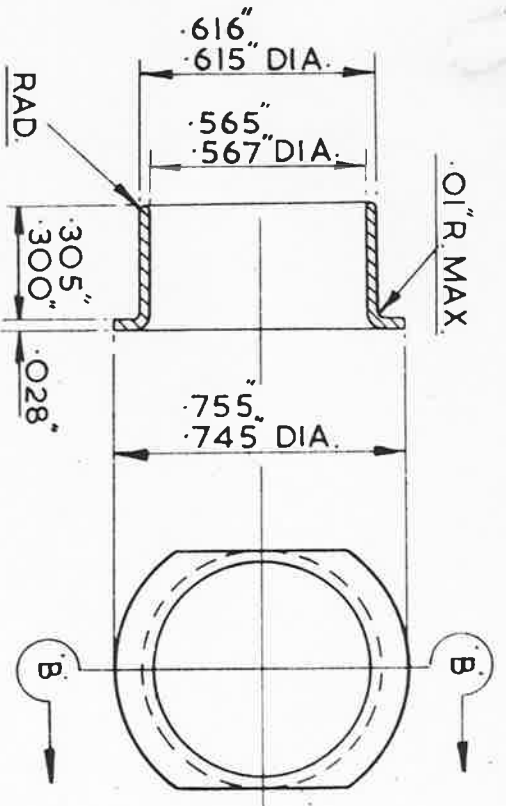
FINISH:- ELECTRO-TINNED, THICKNESS NOT LESS THAN .0002"

THIS AGS. SHEET REPLACES DRG. EL. 12415

ISSUED BY THE ROYAL AIRCRAFT ESTABLISHMENT	TITLE: - SLEEVES, BONDING, METAL BRAIDED CABLE, L.T. TYPE 8, CIRCULAR, INNER & OUTER.				DRAWN. LAX.	TRACED P. NUNN. 9/12/42
	ISSUE NO	2	HS	3	SM 872 4	CHECKED
	ALTER# NO	MORNS AS NO AGG 489	AS ARE AC 979	AS ARE 853	AS ARE 993	APPROVED. [Signature]



SECTION A-A



SECTION B-B

AG.S. 1732. MK.1.
OUTER SLEEVE

NOTES :- BOTH MKS.

NOT TO BE USED ON NEW DESIGNS OF EQUIPMENT (SEE S.D.M. (A) 313)

ALL SHARP EDGES TO BE ROUNDED OFF

FINISH :- ELECTRO-TINNED THICKNESS NOT LESS THAN .0002"

AG.S. 1732. MK. 2.
INNER SLEEVE

SM 1099	ISSUE NO	6	ACT NO	F106
---------	----------	---	--------	------

USED ON						REF	DRAWING OR PART NO	DESCRIPTION	MATERIAL	REMARKS		
DESIGNED	DRAWN	TRACED	CHECKED	APPROVED FOR	DATE							
	F.A.L.	F.A.L.	F.A.L.	S.B.A.C. <i>M. J. Jones</i>	15.63				BRASS ROD OR BRASS TUBE ANNEALED	B.S. 249 B.S. 885		
ISSUED BY THE SOCIETY OF BRITISH AIRCRAFT CONSTRUCTORS LTD., 29, KING STREET, ST. JAMES'S, LONDON, S.W. 1						HT	PT	AS	SCALE	2:1	MIS. NO. SHOWN	THIRD ANGLE PROJECTION
												AG.S. 1732