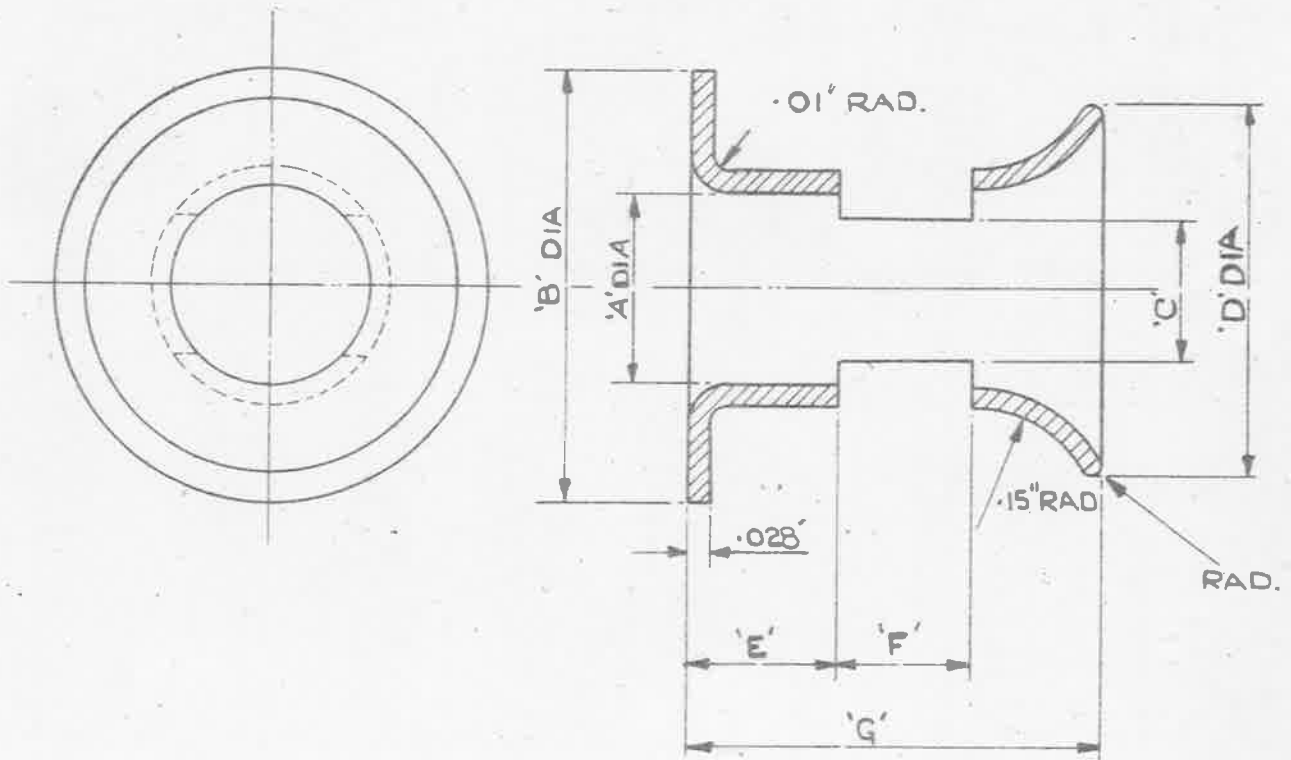


**OBSOLESCE** - NO FURTHER MANUFACTURE.  
EXISTING STOCKS MAY BE USED.

MINISTRY OF  
SUPPLY

**AGS. N° 1733**

**SHEET N° 1** | **N° OF SHEETS 1**



EDGES MUST BE FREE FROM BURRS.

		A	B	C	D	E	F	G	
STORES REF. N°	MARK.	±.005"	±.005"	±.005"	±.005"	±.005"	±.005"	±.005"	REMARKS.
5K/2361	1	.53"	.68"	.20"	.62"	.20"	.20"	.55"	TAKEN FROM DRG. N° ERI 7296-8
5K/2367	2	.43"	.56"	.20"	.49"	.20"	.20"	.55"	TAKEN FROM DRG. N° ERI 7837-2
5K/2398	3	.65"	1.15"	.30"	.84"	.25"	.25"	.80"	TAKEN FROM DRG. N° ERI 8035-2.

MATERIAL:- BRASS TUBE TO B.S. SPEC: 886 (LATEST ISSUE) OR BRASS SHEET (22 S.W.G) TO B.S. SPEC: 265, (LATEST ISSUE), ANNEALED, OR B.S. SPEC: 267, (LATEST ISSUE), ANNEALED.

FINISH:- ELECTRO-TINNED, TO SPEC: D.T.D 924 (LATEST ISSUE)

MINISTRY OF SUPPLY  
APPLICATIONS FOR A.G.S. SHEETS  
TO A.T.P 4, CHESSINGTON, SURREY  
GENERAL ENQUIRIES TO:-  
A.D/S.A.E., ST GILES COURT  
1-13 ST GILES HIGH STREET,  
LONDON, W.C.2

**TITLE:- SLEEVES, PLAIN CABLE,  
L.T. TYPE 1, CIRCULAR, N° 3.**

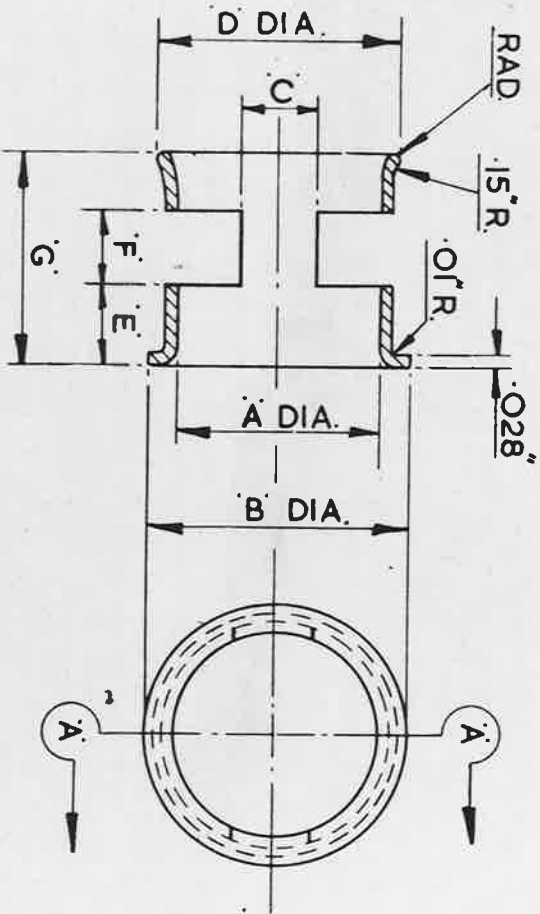
ISSUE N° SM 6-371  
ALTER N° MOD/AGE 993

DRAWN.  
G. STRAUGHTON

CHECKED  
*ASX*

TRACED  
A.S.T.  
8-12-42.

APPROVED  
*[Signature]*  
36-1-53



MARK	A	B	C	D	E	F	G
	$\pm .005$	$\pm .005$	$\pm .005$	$\pm .005$	$\pm .005$	$\pm .005$	$\pm .005$
1	.53"	.68"	.20"	.62"	.20"	.20"	.55"
2	.43"	.56"	.20"	.49"	.20"	.20"	.55"
3	.65"	1.15"	.30"	.84"	.25"	.25"	.80"

NOTE:-

NOT TO BE USED ON NEW DESIGNS OF EQUIPMENT (SEE S.D.M. (A) 313)  
 EDGES MUST BE FREE FROM BURRS.

DESIGNED	DRAWN	TRACED	CHECKED	APPROVED FOR	DATE
	F.A.L.	F.A.L.	F.A.L.	S.B.A.C. <i>S. B. A. C.</i>	7.5.63

ISSUED BY THE SOCIETY OF BRITISH AIRCRAFT CONSTRUCTORS LTD.,  
 29, KING STREET, ST. JAMES'S, LONDON, S.W.1.

REF.	DRAWING OR PART No.	DESCRIPTION	LIMITS NOT SHOWN	MATERIAL - REMARKS
	22 SWG.	BRASS TUBE (ANNEALED) OR		B.S. 885
	22 SWG.	BRASS SHEET (ANNEALED)		BS. 265 OR 267.
	HT	PT	ELECTRO TINNED TO SCALE	THIRD ANGLE PROJECTION.
				A.G.S. 1733.

SM 1099  
 ISSUE No. 8  
 ALT. No. F106