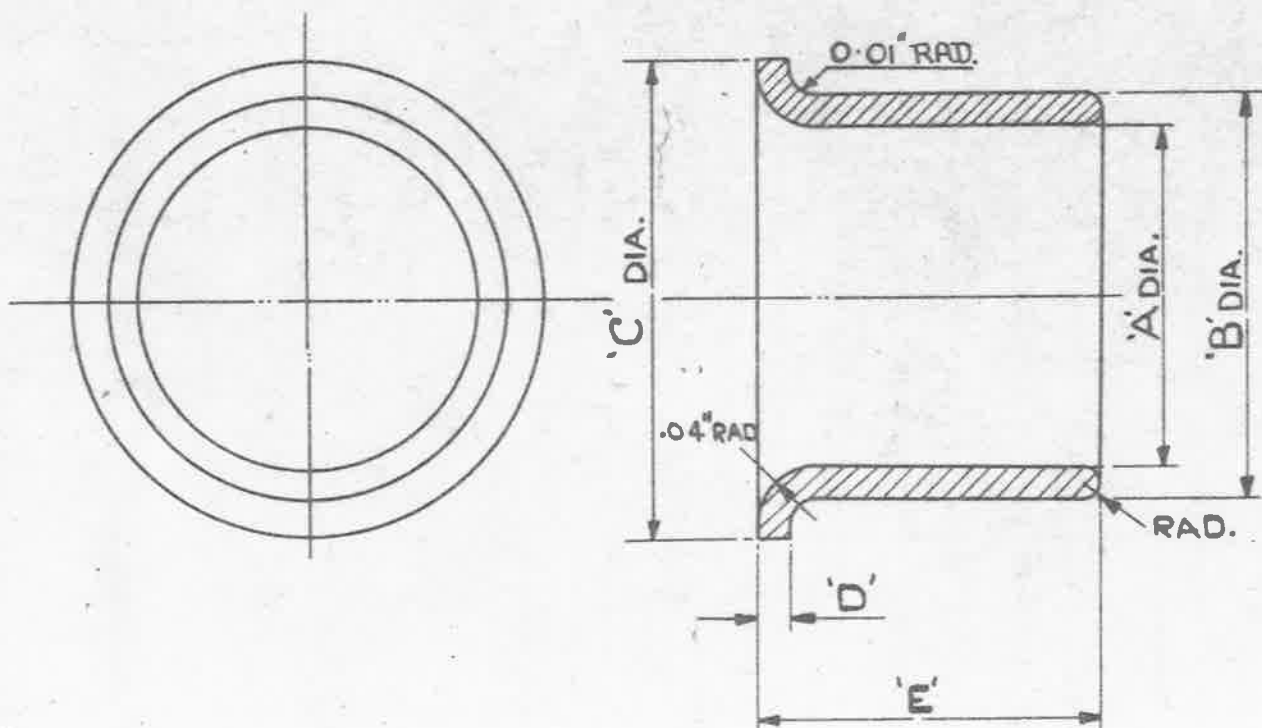


OBSOLESCEMENT - NO FURTHER MANUFACTURE.
EXISTING STOCKS MAY BE USED.

MINISTRY OF
SUPPLY

AGS. NO 1735

SHEET NO 1 | NO OF SHEETS 1



ALL SHARP EDGES TO BE ROUNDED OFF.

STORES REF. NO	MARK	A	B	C	D	E	REMARKS.
		+0.002" -0	+0.003" -0	+0.005"	+0.005"	+0.005"	
5K/2363	1	.445"	.50"	.61"	.03"	.35"	REPLACES DRG. NO E&I 7837-4 E&I 9265-4
5K/2370	2	.495"	.55"	.61"	.03"	.35"	REPLACES DRG. NO E&I 7796-5.
5K/2360	3	.702"	.84"	1.10"	.06"	.80"	REPLACES DRG. NO E&I 7228-1
5K/2373	4	.702"	.84"	.96"	.05"	.55"	REPLACES DRG. NO E&I. 8035-5.

MATERIAL :- BRASS.

FINISH :- ELECTRO - TINNED, THICKNESS NOT LESS THAN .0002"

ISSUED BY THE
ROYAL
AIRCRAFT
ESTABLISHMENT.

TITLE: - SLEEVES, BONDING, METAL BRAIDED
CABLE, L.T. TYPE 9, CIRCULAR, OUTER.

DRAWN.
G. STAUGHTON

TRACED
A.S.T.
9-12-42

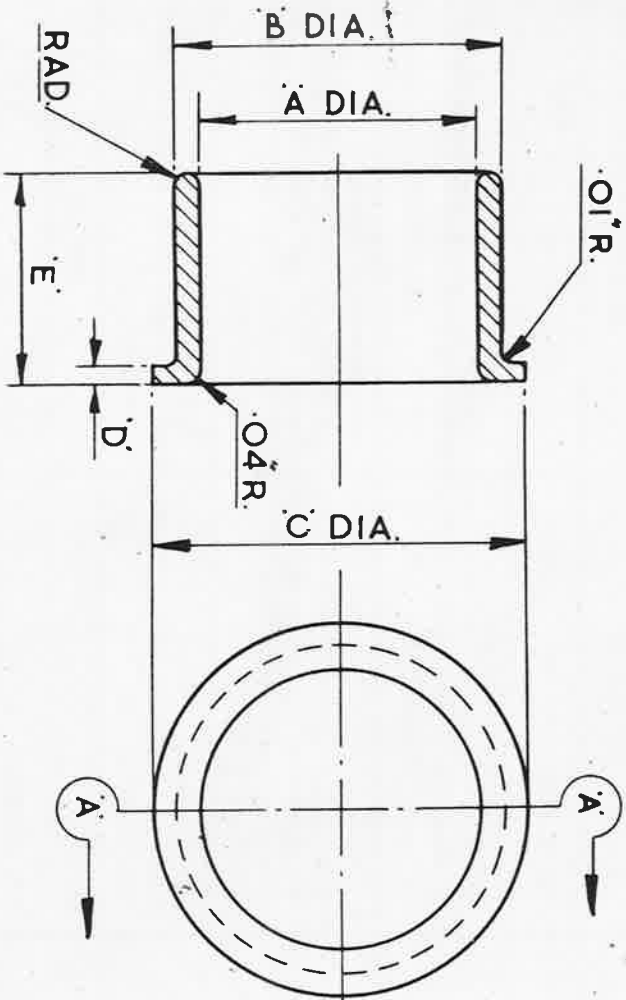
ISSUE NO 182 3 SM 871
ALTERS NO MOD NO AS NO AS/ACS MOD/ACS
AGS/488 AGS/598 853 993

CHECKED
J.S.K.

APPROVED.
G. Staughton
25.7.55

ISSUE No. **5**
 ALT. No. **F106**

MARK	A	B	C	D	E
1	.445"	.503"	.615"	.035"	.355"
	.447"	.500"	.605"	.025"	.345"
2	.495"	.553"	.615"	.035"	.355"
	.497"	.550"	.605"	.025"	.345"
3	.702"	.843"	1.105"	.065"	.805"
	.704"	.840"	1.095"	.055"	.795"
4	.702"	.843"	.965"	.055"	.555"
	.704"	.840"	.955"	.045"	.545"



NOTE:-

NOT TO BE USED ON NEW DESIGNS OF EQUIPMENT (SEE S.D.M. (A) 313)

ALL SHARP EDGES TO BE ROUNDED OFF.

FINISH:-

ELECTRO-TINNED, THICKNESS NOT LESS THAN .0002"

REF	DRAWING OR PART No.	DESCRIPTION	MATERIAL	REMARKS
		BRASS ROD OR	BS. 249.	
		BRASS SHEET OR	BS. 265.	
		BRASS TUBE (ANNEALED)	BS. 885.	

HT	PT	AS ABOVE	SCALE	LIMITS NOT SHOWN	THIRD ANGLE PROJECTION.
					A.G.S. 1735.

USED ON						
DESIGNED	DRAWN	TRACED	CHECKED	APPROVED FOR S.B.A.C.	DATE	
	F.A.L.	F.A.L.	F.A.L.	<i>S. M. Jones</i>	9.5.63	

ISSUED BY THE SOCIETY OF BRITISH AIRCRAFT CONSTRUCTORS LTD.,
 29, KING STREET, ST. JAMES'S, LONDON, S.W.1.