

TOLERANCE ± 0.05 ON ALL DIMENSIONS  
UNLESS OTHERWISE STATED

TAKEN FROM DRAWING N° E 18035-3

MATERIAL - BRASS TO B.S. SPEC. 249 (LATEST ISSUE)  
OR DIE CASTING TO B.S. SPEC. 932 (LATEST ISSUE)

FINISH - TO BE ELECTRO-TINNED, THICKNESS NO LESS THAN .0002"

STORES REF. N° 5A/P371

ISSUED BY THE  
 ROYAL AIRCRAFT  
 ESTABLISHMENT

TITLE - COLLET		DRAWN	TRACED
ISSUE N°	28	CHECKED	APPROVED
ALTERS N°			

DATE	7-12-48
CHECKED	APPROVED

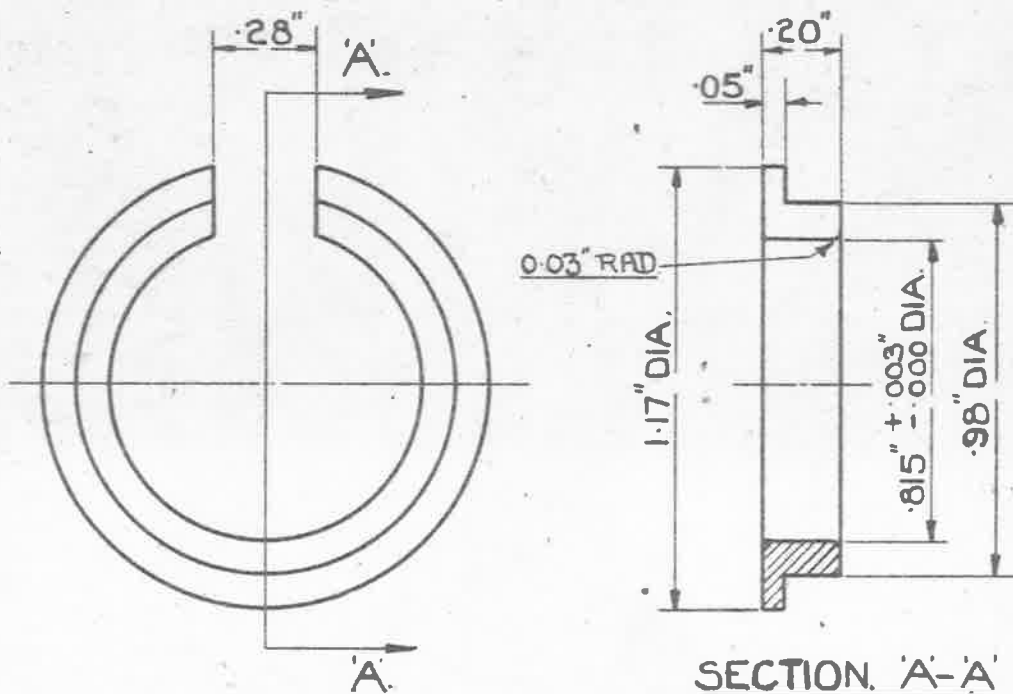
OBSOLESCEMENT-NO FURTHER MANUFACTURE.  
EXISTING STOCKS MAY BE USED.

MINISTRY OF  
SUPPLY

AGS. N° 1736.

SHEET N° 1

N° OF SHEETS 1



TOLERANCE  $\pm .005$  ON ALL DIMENSIONS.  
UNLESS OTHERWISE STATED.

TAKEN FROM DRAWING N° E & I 8035-3.

MATERIAL:- BRASS TO B.S. SPEC: 249. (LATEST ISSUE.)

OR DIE CASTING TO B.S. SPEC: 932. (LATEST ISSUE.)

FINISH:- TO BE ELECTRO-TINNED, THICKNESS NOT LESS THAN .0002".

STORES REF. N° 5K/2371.

ISSUED BY THE  
ROYAL AIRCRAFT  
ESTABLISHMENT.

TITLE:-  
COLLET.

DRAWN.  
J. STRAUGHTON

TRACED  
J.B.B.  
7-12-42.

ISSUE N°	2	54-371
ALTERS N°	MOD N°	AS/AGS
	AGS/48	663 993

CHECKED  
J.S.

APPROVED.  
J.B.B.  
26-1-43