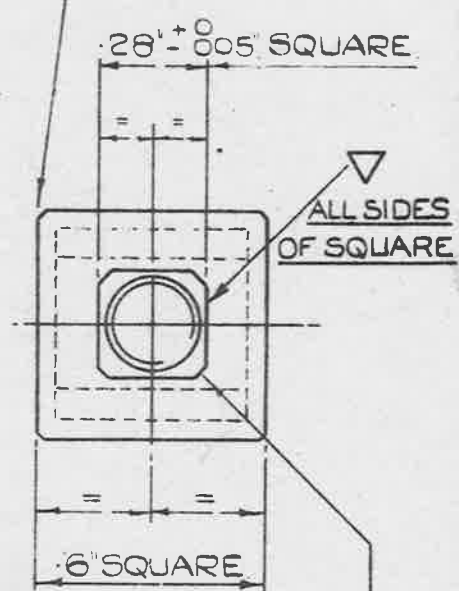
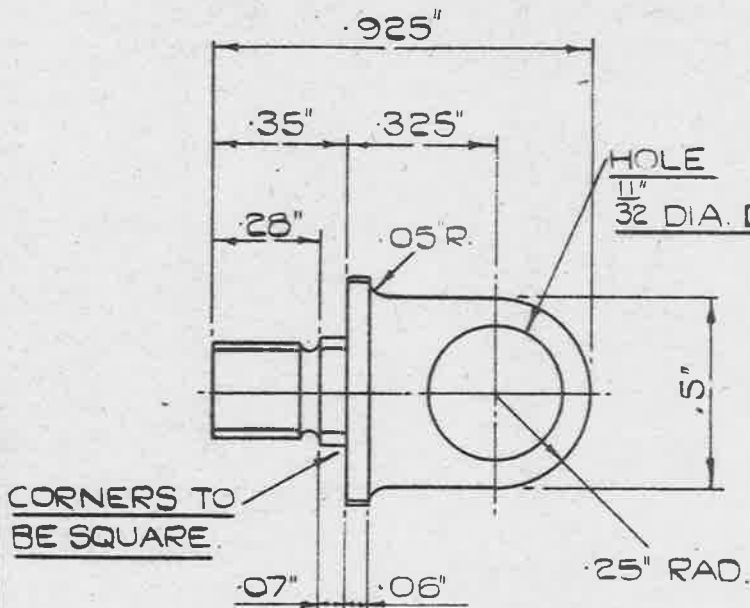


UNLIMITED DIMENSIONS  $\pm .005$ "

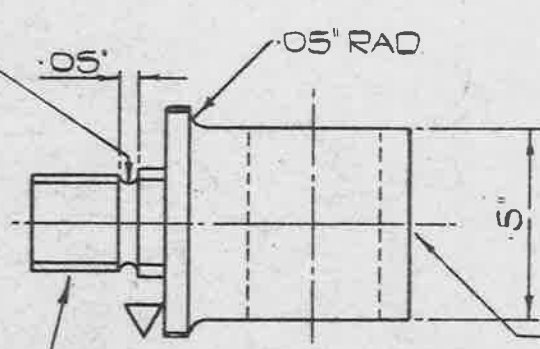
A.G.S. 1740.

**OBSOLESCE**

SHARP CORNERS REMOVED



UNDERCUT TO BASE OF THREAD



CORNERS CHAMFERED  
.03 AT 45°

A.G.S. 1740 TO BE LEGIBLY  
AND DURABLY MARKED IN  
POSITION SHOWN.

SCREWED  $\frac{1}{4}$ " B.S.F.  
TO B.S.S. N° 84  
(MEDIUM FIT)

MACHINE WHERE MARKED  $\nabla$

**MATERIAL:-** BRASS TO B.S. SPEC: N° 249 (LATEST ISSUE)  
OR DIE CASTING TO B.S. SPEC: N° 1400 B4-C LATEST ISSUE  
OR DROP STAMPING TO B.S. SPEC N° 218 (LATEST ISSUE)  
**FINISH:-** ELECTRO - TIN TO SPEC. D.T.D. 924 (LATEST ISSUE)

**NOTE :-** THIS LUG IS TO BE SUPPLIED COMPLETE WITH LOCKING  
PLATE A.G.S. 1742 & NUT  $\frac{1}{4}$ " B.S.F. (THIN) B.S. SPEC: A.14 PART N° EB.

**NOTE:-** THIS A.G.S. REPLACES DRG. N° EL. 13216-5.

REF. N° 5C/2331

SCALE:- 2/1

**TITLE:-** LUG, TERMINAL  
N° 15.

ISSUE <sup>SM 453</sup> 3  
ALT. N° <sup>Mod/AGS</sup> 796

**MINISTRY OF SUPPLY**  
APPLICATIONS FOR A.G.S. SHEETS TO:-  
A.P.4A. THAMES HOUSE, MILLBANK, S.W.1.

R.A.E. APPROVAL		AD. S.A.E. APPROVAL	
SIGNATURE	DATE	SIGNATURE	DATE
<i>C.S.P.</i>	8. 3. 50	<i>G.T. Carter</i>	5/9/51

GENERAL INQUIRIES TO:-  
AD. S.A.E. THAMES HOUSE, MILLBANK, S.W.1.

SHEET N°	1	A.G.S. N° 1740.
N° OF SHEETS	1	