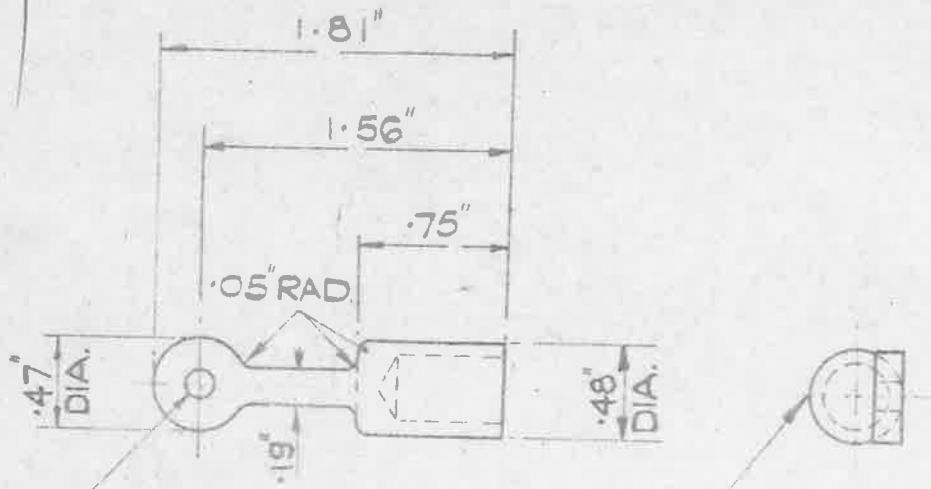


UNLIMITED DIMENSIONS $\pm .005''$

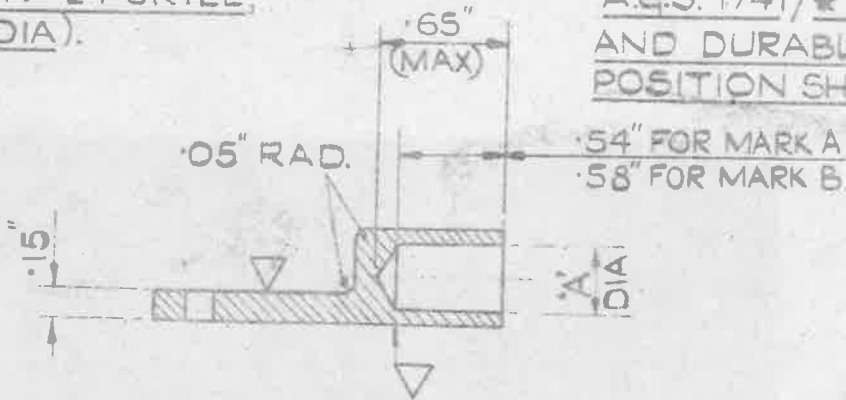
A.G.S. 1741

OBSOLESCE



HOLE, No 24 DRILL.
(.152" DIA).

A.G.S. 1741/* TO BE LEGIBLY
AND DURABLY MARKED IN
POSITION SHOWN. (* MARK)



MACHINE WHERE MARKED. ∇

MATERIAL:- BRASS TO B.S. SPEC: No 249. (LATEST ISSUE.)
OR DIE CASTING TO B.S. SPEC: No 1400(B4-C) (LATEST ISSUE)
OR DROP STAMPING TO B.S. SPEC: No 218 (LATEST ISSUE)
FINISH:- ELECTRO - TIN TO SPEC. D.T.D. 924 (LATEST ISSUE)

REFERENCE No	MARK	LUG	'A' DIMENSION
5C/2466	A	No 16	.344"
5C/3872	B	No 31	.201"

A.G.S. 1741 REPLACES DRG. E&I. 11025.

SCALE:- FULL SIZE.

TITLE:- LUG, TERMINAL
Nos 16 & 31.

ISSUE	SM 454 3				
ALT. No	MCG/ASS 796				
R.A.E. APPROVAL			AD. S.A.E. APPROVAL		
SIGNATURE	DATE	SIGNATURE	DATE		
<i>C. B. King</i>	8.3.50	<i>C. T. Bunter</i>	5/9/51		
SHEET No	1	A.G.S. No 1741.			
No OF SHEETS	1				

MINISTRY OF SUPPLY
APPLICATIONS FOR A.G.S. SHEETS TO:-
A.T.P. 4A. THAMES HOUSE, MILLBANK, S.W.1.
GENERAL INQUIRIES TO:-
AD. S.A.E. THAMES HOUSE, MILLBANK, S.W.1.