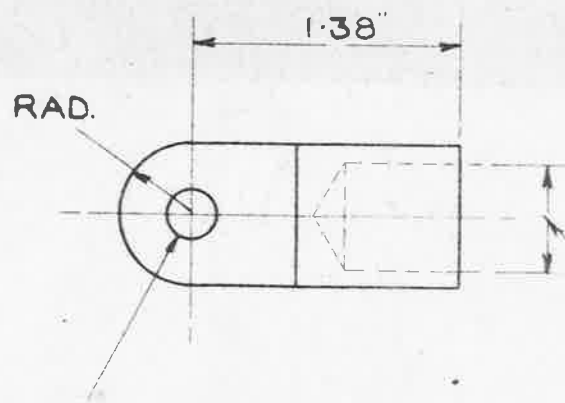
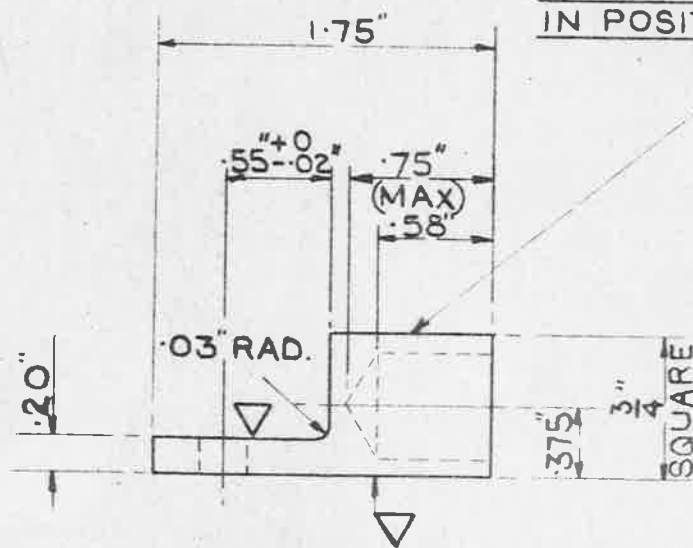


**OBSOLESCE**

AGS 1744 TO BE LEGIBLY AND DURABLY MARKED IN POSITION SHOWN.



HOLE, LETTER G DRILL, (.261" DIA).

HOLE 9/16" DIA DRILL

MACHINE WHERE MARKED ▽

MATERIAL:- BRASS TO B.S. SPEC: N° 249 (LATEST ISSUE)  
OR DIE CASTING TO B.S. SPEC: N° 1400 (B4-C) (LATEST ISSUE)  
OR DROP STAMPING TO B.S. SPEC: N° 218 (LATEST ISSUE)

FINISH:- ELECTRO - TIN TO SPEC D.T.O. 924 (LATEST ISSUE)

REF. N° 5C/2728

SCALE:- FULL SIZE

**TITLE:- LUG, TERMINAL**  
N° 17.

ISSUE	3	4					
ALT. N°	796	908					

**MINISTRY OF SUPPLY**  
 APPLICATIONS FOR A.G.S. SHEETS TO:-  
 A.T.P. 4A. THAMES HOUSE, MILLBANK, S.W.1.

R.A.E. APPROVAL		AD. S.A.E. APPROVAL	
SIGNATURE	DATE	SIGNATURE	DATE
<i>C. B. R. G.</i>	8.3.50	<i>G. T. Tainton</i>	5/9/51

GENERAL INQUIRIES TO:-  
 S.A.E. THAMES HOUSE, MILLBANK, S.W.1.

SHEET N°	1	<b>A.G.S. N° 1744</b>
N° OF SHEETS	1	