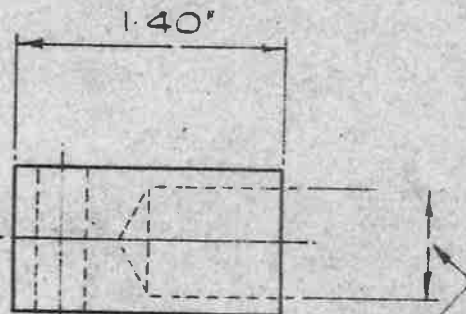
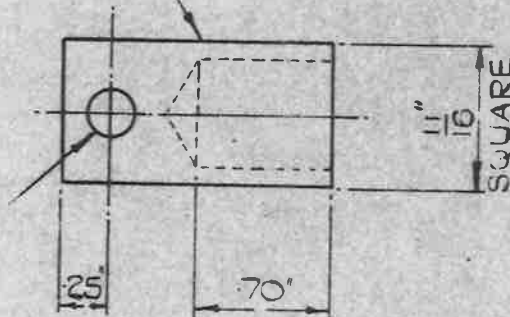


OBSOLESCE

A.G.S.1746 TO BE LEGIBLY
AND DURABLY MARKED IN
POSITION SHOWN.

HOLE, LETTER G.
DRILL, (.261" DIA).



HOLE $\frac{9}{16}$ DIA. DRILL

MATERIAL:- BRASS TO B.S. SPEC: N^o249 (LATEST ISSUE)
OR DIE CASTING TO B.S. SPEC: N^o1400(B4-C) (LATEST ISSUE)

FINISH:- ELECTRO - TIN TO SPEC. D.T.D.924 (LATEST ISSUE)

REF N^o 5C/3435

SCALE:- FULL SIZE

TITLE:- LUG TERMINAL N ^o 18	ISSUE ^{SM 3454} 3				
	ALTN ^o ^{100/AGS} 796				
MINISTRY OF SUPPLY APPLICATIONS FOR A.G.S. SHEETS TO:- A.T.P.4A. THAMES HOUSE, MILLBANK, S.W.1. GENERAL INQUIRIES TO:- A.D.S.A.E. THAMES HOUSE, MILLBANK, S.W.1.	R.A.E. APPROVAL		AD. S.A.E. APPROVAL		
	SIGNATURE <i>C.B. R...</i>	DATE 8.3.50	SIGNATURE <i>G.T. Y...</i>	DATE 5/9/51	
	SHEET N ^o 1		A.G.S. N ^o 1746		
	N ^o OF SHEETS 1				