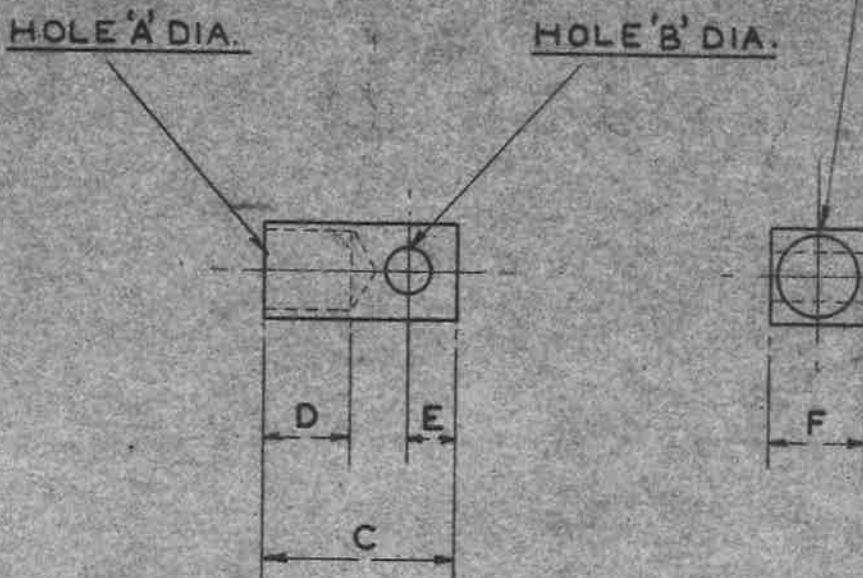


OBSOLESCE

A.G.S. 1747/* TO BE LEGIBLY AND DURABLY
 MARKED IN POSITION SHOWN
 (*MARK)



MARK	LUG N ^o	REF. N ^o	A	B	C	D	E	F
A	19	5C/3638	.422"	.261"	1.00"	.45"	.250"	1/2" SQUARE
B	23	5C/3170	.344"	.201"	.80"	.32"	.250"	1/2" SQUARE
C	24	5C/3066	.201"	.201"	.75"	.30"	.250"	1/2" SQUARE
D	27	5C/3766	.201"	.152"	.69"	.30"	.168"	5/16" SQUARE

MATERIAL:- BRASS TO B.S. SPEC: N^o 249 (LATEST ISSUE).
OR DIE CASTING TO B.S. SPEC: N^o 1400 (B4-C) (LATEST ISSUE)

FINISH:- ELECTRO - TIN TO SPEC. DTD. 924 (LATEST ISSUE)

TITLE:- LUG, TERMINAL N ^{os} 19, 23, 24 & 27	ISSUE <small>5th 499</small>				
	ALT. N ^o <small>100/AGS 796</small>				
MINISTRY OF SUPPLY APPLICATIONS FOR A.G.S. SHEETS TO A.T.P. 4A. THAMES HOUSE, MILLBANK, S.W.1. GENERAL INQUIRIES TO:- A.D.S.A.E. THAMES HOUSE, MILLBANK, S.W.1.	R.A.E. APPROVAL SIGNATURE <i>C. J. Lamb</i>		AD. S.A.E. APPROVAL SIGNATURE <i>G. I. Tamlin</i>		
	DATE 8. 3. 50		DATE 5/9/51		
SHEET N ^o 1		N ^o OF SHEETS 1		A.G.S. N^o 1747	