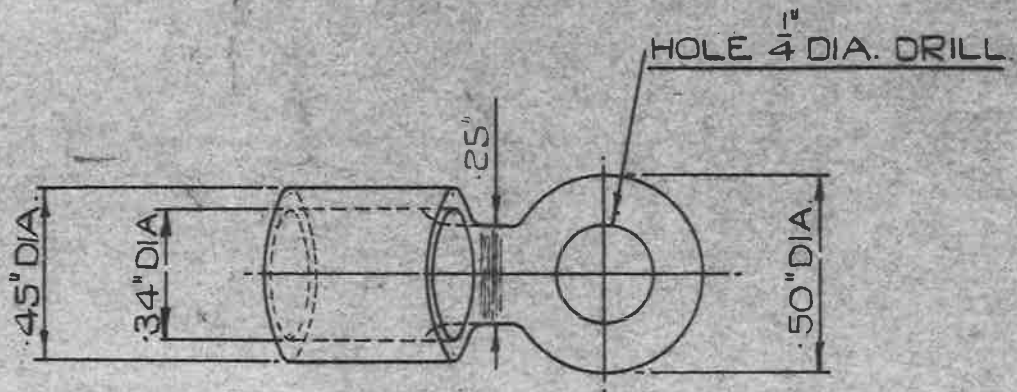
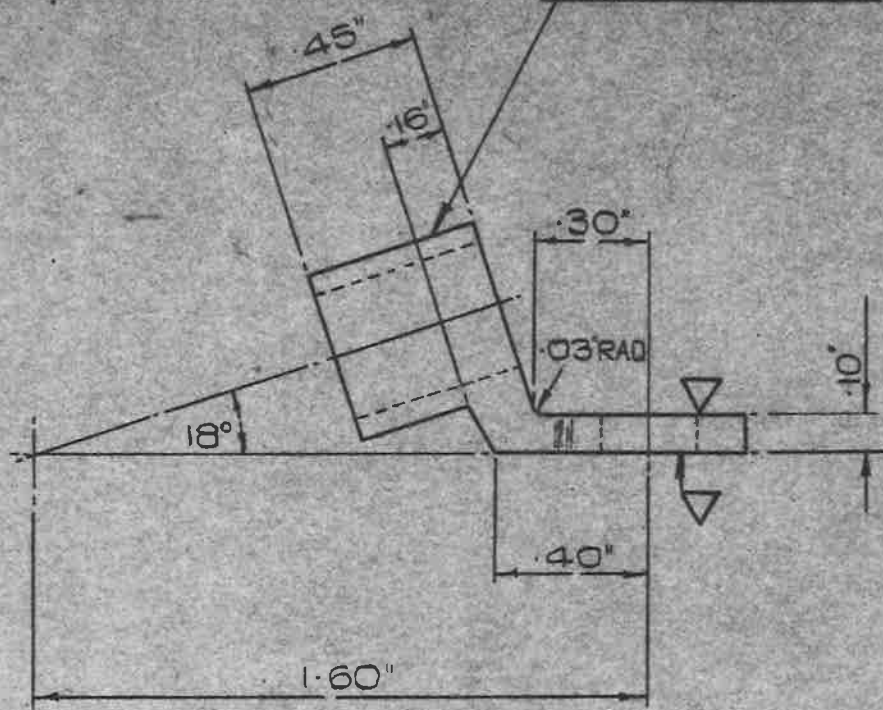


OBSOLESCE

A.G.S. 1748 TO BE LEGIBLY AND DURABLY MARKED IN POSITION SHOWN



MACHINE WHERE MARKED ▽

MATERIAL :- BRASS TO B.S. SPEC: N^o 249 (LATEST ISSUE)
 OR DIE CASTING TO B.S. SPEC: N^o 1400(B4-C)(LATEST ISSUE)
 OR DROP STAMPING TO B.S. SPEC: N^o 218 (LATEST ISSUE)

FINISH :- ELECTRO-TIN TO SPEC. D.T.D. 924 (LATEST ISSUE)

REF. N^o 5C/2551.

SCALE :- 2/1.

TITLE :- LUG, TERMINAL, N^o 22
 (D.C. OUTPUT ON 'U.K.X.' GENERATOR)

| | | | | | |
|--------------------------|---------------------|----------------------------|--------|--|--|
| ISSUE | SM 3 ⁴⁵⁵ | | | | |
| ALT. N ^o | MAGS 796 | | | | |
| R.A.E. APPROVAL | | AD. S.A.E. APPROVAL | | | |
| SIGNATURE | DATE | SIGNATURE | DATE | | |
| <i>C.S. Ramesh</i> | 8.3.50. | <i>G.T. Taintor</i> | 5/9/51 | | |
| SHEET N ^o | 1 | A.G.S. N ^o 1748 | | | |
| N ^o OF SHEETS | 1 | | | | |

MINISTRY OF SUPPLY
 APPLICATIONS FOR A.G.S. SHEETS TO:-
 A.T.P. 4A. THAMES HOUSE, MILLBANK, S.W.1.
 GENERAL INQUIRIES TO:-
 A.D. S.A.E. THAMES HOUSE, MILLBANK, S.W.1.