

P)

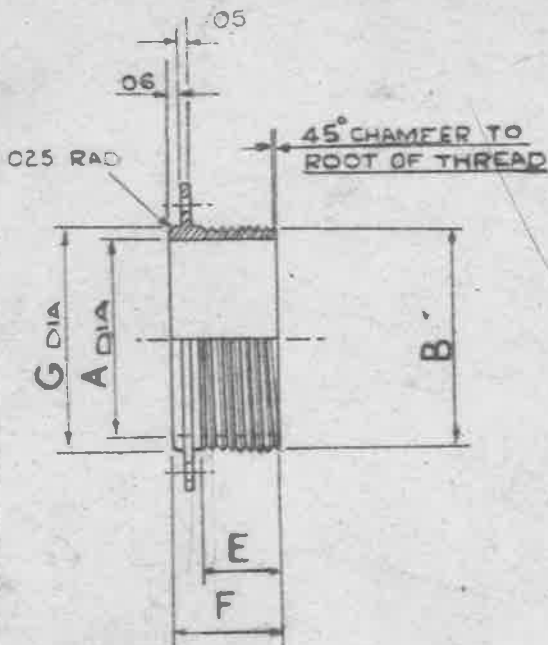
BASED ON DRAWING ECI 8256
NOT NECESSARILY IDENTICAL

MINISTRY OF
AIRCRAFT
PRODUCTION

AGS N^o 1756

SHEET N^o 1

N^o OF SHEETS 1



4 HOLES TO SUIT
"H" DIA RIVETS

MARK	A	B	TPI	C	D	E	F	G	H	FITS COUPLING NUT AGS	STORES REF N ^o
	±.005	DIA		±.005	±.005	±.005	±.005	±.005			
1	.540	.625	26	1.000	.812	.32	.480	.625	1/16	1658-0/1	5K/2618
2	.600	.750	26	1.150	.937	.32	.480	.750	1/16	1658-1A/2	5K/2619
3	.725	.875	26	1.310	1.090	.32	.480	.875	1/16	1658-2A/3	5K/2620
4	.820	1.000	16	1.500	1.250	.32	.480	1.000	3/32	1658-3A/4	5K/2621
5	.950	1.125	16	1.500	1.312	.50	.660	1.125	3/32	1658-4A/5	5K/2622
6	1.070	1.250	16	1.750	1.500	.50	.660	1.250	3/32	1658-5A/6	5K/2623
7	1.200	1.375	16	1.875	1.625	.50	.660	1.375	3/32	1658-6A/7	5K/2624
8	1.270	1.437	16	1.950	1.687	.50	.660	1.437	3/32	1658-7A/	5K/2625
9	.950	1.125	16	1.620	1.370	.50	.660	1.125	3/32	1658-4A/5	5K/2626
10	1.460	1.625	20	2.130	1.875	.50	.660	1.625	3/32	STORES REF N ^o 5K/267	5K/2627
11	1.460	1.625	20	2.240	1.950	.50	.660	1.625	5/32	STORES REF N ^o 5K/257	5K/2809

MATERIAL :- STEEL, COMMERCIAL QUALITY.

FINISH :- CADMIUM PLATED TO SPEC DTD 904 (LATEST ISSUE)

NOTE :- SCREW THREADS TO B S SPEC N^o 84 - 1940

MEDIUM FIT, TRUNCATED THREADS (AMENDMENT N^o 3 - 1945)

MARKING :- AGS N^o & MARK N^o TO BE STAMPED ON EACH ONE

ISSUED BY THE ROYAL AIRCRAFT ESTABLISHMENT	TITLE: CONNECTOR, BONDING FLANGED, (ROUND)				DRAWN	TRACED	
	ISSUE N ^o	1	2	3	4	CHECKED	APPROVED
	ALTER N ^o						

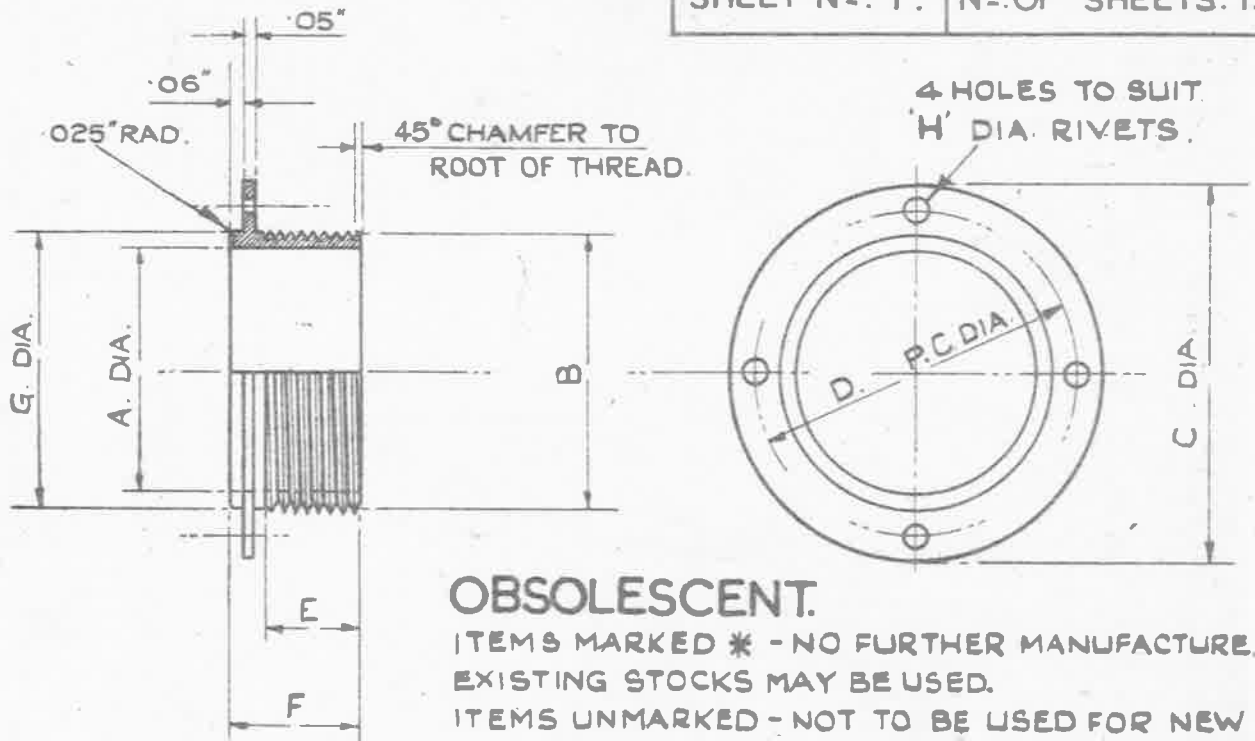
BASED ON DRAWING E&I. 8256
NOT NECESSARILY IDENTICAL

MINISTRY OF
SUPPLY.

A.G.S. No. 1756

SHEET No. 1.

No. OF SHEETS. 1.



OBSOLESCE

ITEMS MARKED * - NO FURTHER MANUFACTURE.
EXISTING STOCKS MAY BE USED.
ITEMS UNMARKED - NOT TO BE USED FOR NEW
DESIGNS.

MARK	A	B		C	D	E	F	G	H	FITS COUPLING NUT A.G.S.	STORES REF No.
	±.005" DIA	T.P.I.	±.005" DIA	±.005" DIA	±.005" DIA	±.005" DIA	±.005" DIA	±.005" DIA			
1	.540"	.625"	26	1.000"	.812"	.32"	.480"	.625"	1/16"	1658 - 0/1	5K/2618
2	.600"	.750"	26	1.150"	.937"	.32"	.480"	.750"	1/16"	1658 - 1A/2	5K/2619
3	.725"	.875"	26	1.310"	1.090"	.32"	.480"	.875"	1/16"	1658 - 2A/3	5K/2620
4	.820"	1.000"	16	1.500"	1.250"	.32"	.480"	1.000"	3/32"	1658 - 3A/4	5K/2621
5	.950"	1.125"	16	1.500"	1.312"	.50"	.660"	1.125"	3/32"	1658 - 4A/5	5K/2622
6*	1.070"	1.250"	16	1.750"	1.500"	.50"	.660"	1.250"	3/32"	1658 - 5A/6	5K/2623
7	1.200"	1.375"	16	1.875"	1.625"	.50"	.660"	1.375"	3/32"	1658 - 6A/7	5K/2624
8*	1.270"	1.437"	16	1.950"	1.687"	.50"	.660"	1.437"	3/32"	1658 - 7A/	5K/2625
9*	.950"	1.125"	16	1.620"	1.370"	.50"	.660"	1.125"	3/32"	1658 - 4A/5	5K/2626
10*	1.460"	1.625"	20	2.130"	1.875"	.50"	.660"	1.625"	3/32"	STORES REF. No. 5X/257	5K/2627
11*	1.460"	1.625"	20	2.240"	1.950"	.50"	.660"	1.625"	5/32"	STORES REF. No. 5X/257	5K/2809

MATERIAL:- STEEL COMMERCIAL QUALITY.

FINISH:- CADMIUM PLATED TO SPEC. D.T.D. 904 (LATEST ISSUE)

NOTE:- SCREW THREADS TO B.S. SPEC. No. 84 - 1940,
MEDIUM FIT, TRUNCATED THREADS (AMENDMENT No. 3. - 1945)

MARKING:- A.G.S. No. & MARK No. TO BE STAMPED ON EACH ONE.

ISSUED BY THE ROYAL AIRCRAFT ESTABLISHMENT.	TITLE:- CONNECTOR, BONDING, FLANGED, (ROUND).				DRAWN	RE-TRACED
	ISSUE No.	A		5/5/47	CT Reynolds	S.J.
	ALTER. No.	A.S. No.	AS/AGS	MS/AGS	(From E&I. Dwg)	10 th OCT '46
		AGS/635	767	993	CHECKED	APPROVED
					1/10/47	1/10/47