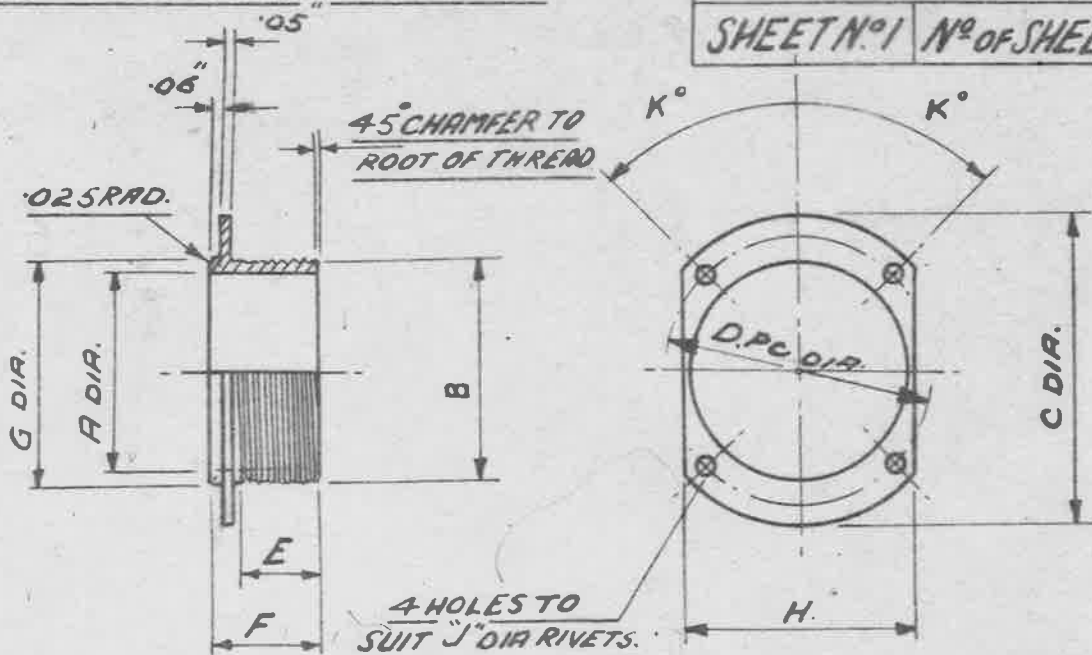


BASED ON DRAWING E81
8257 NOT NECESSARILY IDENTICAL.

AIR MINISTRY A.G.S. N° 1757.

SHEET N° 1 N° OF SHEETS. 1.



MARK	A	B	T.P.I.	C	D	E	F	G	H	J	K	FITS COUPLING NUT A.G.S.	STORES REF. N°.
	±.005	DIA.		±.005	±.005	±.005	±.005	±.005	±.005	±.005	±.005		
1	.540	.625	26	1.000	.812	.32	.480	.625	.650	1/16"	30°	1658-0/1	5K/2628
2	.600	.750	26	1.150	.937	.32	.480	.750	.780	1/16"	30°	1658-1A/2	5K/2629
3	.725	.875	26	1.310	1.090	.32	.480	.875	.900	1/16"	30°	1658-2A/3	5K/2630
4	.820	1.000	16	1.500	1.250	.32	.480	1.000	1.100	3/32"	45°	1658-3A/4	5K/2631
5	.950	1.125	16	1.625	1.375	.50	.660	1.125	1.200	3/32"	45°	1658-4A/5	5K/2632
6	1.070	1.250	16	1.750	1.500	.50	.660	1.250	1.280	3/32"	45°	1658-5A/6	5K/2633
7	1.200	1.375	16	1.875	1.625	.50	.660	1.375	1.400	3/32"	45°	1658-6A/7	5K/2634
8	1.270	1.437	16	1.950	1.687	.50	.660	1.437	1.470	3/32"	45°	1658-7A/	5K/2635
9	.950	1.125	16	1.620	1.370	.50	.660	1.125	1.150	3/32"	45°	1658-4A/5	5K/2636
10	1.200	1.375	16	1.875	1.625	.50	.660	1.375	1.430	3/32"	45°	1658-6A/7	5K/2637.

MATERIAL: STEEL, COMMERCIAL QUALITY.

FINISH: CADMIUM PLATED TO SPEC. D.T.D 904 (LATEST ISSUE)

NOTE. SCREW THREADS TO B.S. SPEC N° 84-1940

MEDIUM FIT, TRUNCATED THREADS (AMENDMENT N° 3-1945)

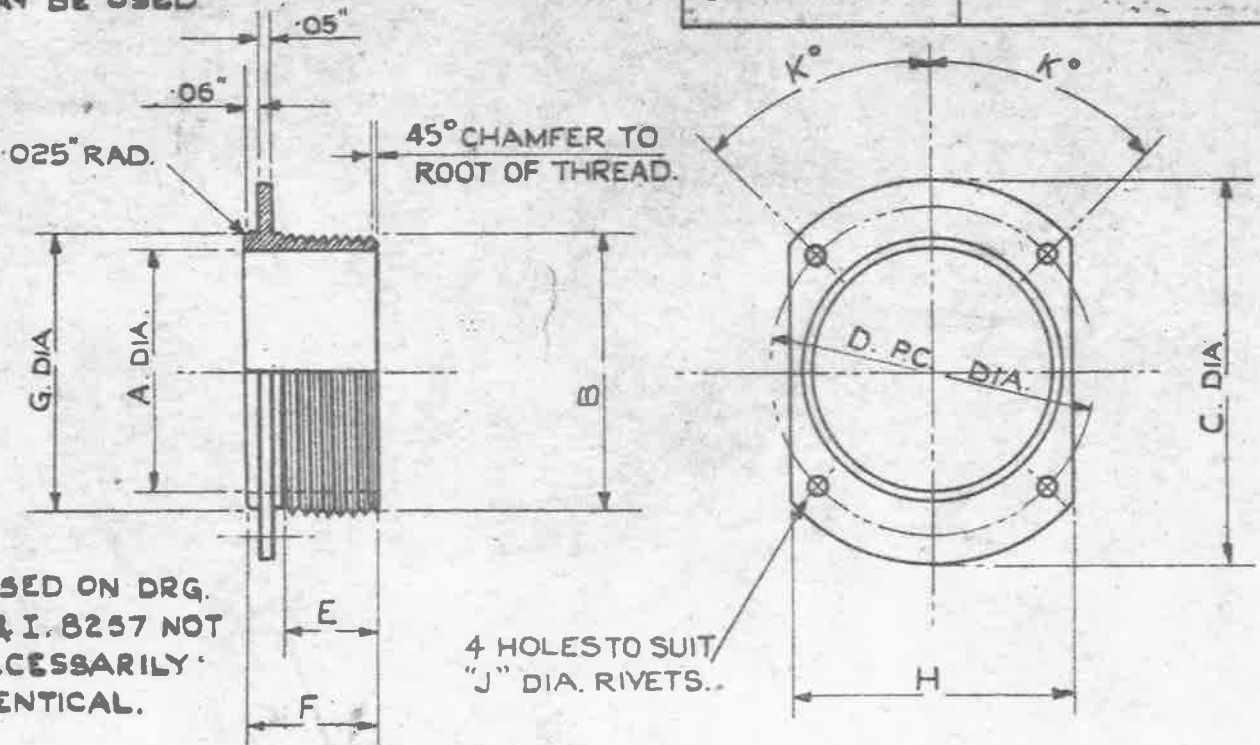
MARKING: A.G.S. N° & MARK N° TO BE STAMPED ON EACH ONE.

ISSUED BY THE ROYAL AIRCRAFT ESTABLISHMENT.	TITLE. CONNECTOR BONDING FLANGED (OVAL)					DRAWN.	TRACED. J.D.M.
	ISSUE N°.	1	2	3		CHECKED.	APPROVED.
	ALTERN°			BY N° 8105			

OBSOLESCE-NO FURTHER
MANUFACTURE. EXISTING STOCKS
MAY BE USED

MINISTRY OF SUPPLY **A.G.S. No. 1757.**

SHEET No. 1. No. OF SHEETS. 1.



BASED ON DRG.
E & I. 8257 NOT
NECESSARILY
IDENTICAL.

4 HOLES TO SUIT
"J" DIA. RIVETS.

M A R K	A		B		C		D		E		F		G		H		J	K°	FITS COUPLING NUT A.G.S.	STORES REF. No.
	±.005"	DIA.	T.P.I.	±.005"	±.005"	±.005"	±.005"	±.005"	±.005"	±.005"	±.005"	±.005"	±.005"	±.005"	±.005"					
1	.540"	.625"	26	1.000"	.812"	.32"	.480"	.625"	.650"	1/16"	30°	1658-0/1	5K/2628							
2	.600"	.750"	26	1.150"	.937"	.32"	.480"	.750"	.780"	1/16"	30°	1658-1A/2	5K/2629							
3	.725"	.875"	26	1.310"	1.090"	.32"	.480"	.875"	.900"	1/16"	30°	1658-2A/3	5K/2630							
4	.820"	1.000"	16	1.500"	1.250"	.32"	.480"	1.000"	1.100"	3/32"	45°	1658-3A/4	5K/2631							
5	.950"	1.125"	16	1.625"	1.375"	.50"	.660"	1.125"	1.200"	3/32"	45°	1658-4A/5	5K/2632							
6	1.070"	1.250"	16	1.750"	1.500"	.50"	.660"	1.250"	1.280"	3/32"	45°	1658-5A/6	5K/2633							
7	1.200"	1.375"	16	1.875"	1.625"	.50"	.660"	1.375"	1.400"	3/32"	45°	1658-6A/7	5K/2634							
8	1.270"	1.437"	16	1.950"	1.687"	.50"	.660"	1.437"	1.470"	3/32"	45°	1658-7A/	5K/2635							
9	.950"	1.125"	16	1.620"	1.370"	.50"	.660"	1.125"	1.150"	3/32"	45°	1658-4A/5	5K/2636							
10	1.200"	1.375"	16	1.875"	1.625"	.50"	.660"	1.375"	1.430"	3/32"	45°	1658-6A/7	5K/2637							

MATERIAL :- STEEL, COMMERCIAL QUALITY.

FINISH :- CADMIUM PLATED TO SPEC: D.T.D. 904 (LATEST ISSUE).

NOTE :- SCREW THREADS TO B.S. SPEC: No. 84-1940,
MEDIUM FIT, TRUNCATED THREADS (AMENDMENT No. 3-1945).

MARKING :- A.G.S. No. & MARK No. TO BE STAMPED ON EACH ONE.

ISSUED BY THE ROYAL AIRCRAFT ESTABLISHMENT.	TITLE :- CONNECTOR, BONDING, FLANGED (OVAL)				DRAWN & TRACED C.T. Reynolds S.J. (From E & I Drg) 10 th OCT 45.	
	ISSUE No.	3	SM 4871		CHECKED	APPROVED
	ALTER. No.	A.S. No. AGS/E3S	MOD/AGS 993		<i>[Signature]</i>	<i>[Signature]</i> 15/10/46