

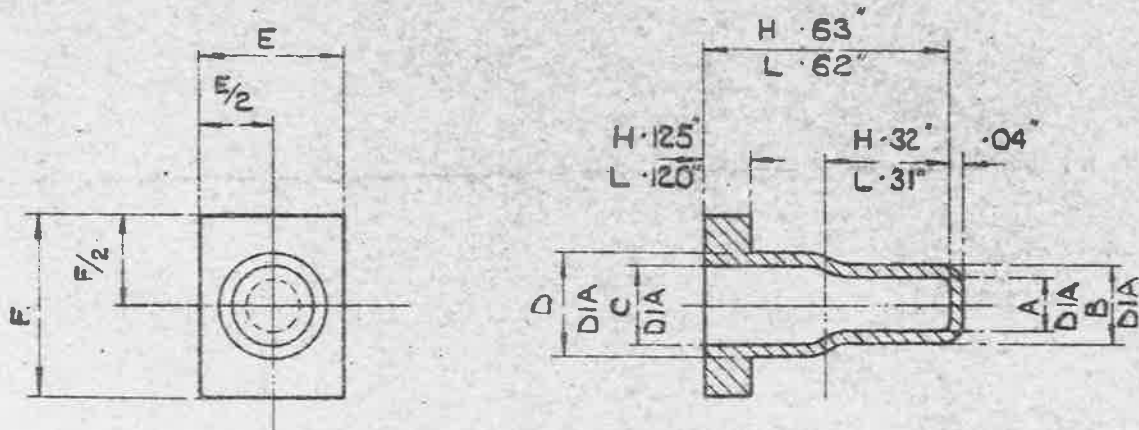
**\* TYPE B. OBSOLESCEMENT.**  
**NO FURTHER MANUFACTURE.**

MINISTRY OF  
 SUPPLY

AGS No. 1762.

SHEET No. 1

No. OF SHEETS 1



A.G.S. No	MARK	REF. No	A	B	C	D	E	F
1762/A	1	5K/2711	.140"	.210"	.185"	.255"	.380"	.480"
			.135"	.200"	.180"	.245"	.375"	.475"
1762/B	2	5K/2712	.195"	.270"	.225"	.300"	.425"	.480"
			.190"	.260"	.220"	.290"	.420"	.475"

\*  
 SEE NOTE  
 ABOVE

NOTE: - FOR TYPES OF CABLES COVERED BY

ABOVE SLEEVES AND DETAILS OF MOULDING

RECESSES, SEE S.I.S. 5428.

MATERIAL: - SPEC. D.T.D. 552 GRADE A.

NOTE: - THE A.G.S. No IS TO BE MOULDED ON EACH SLEEVE

BASED ON DRG. EL. 28985.

ISSUED BY THE ROYAL AIRCRAFT ESTABLISHMENT	<b>TITLE:-</b> SLEEVES, CABLE, SINGLE. (WEATHER PROOFING) <small>SM563</small>				DRAWN <i>AGS</i>	TRACED P.N. 5-7-45.
	ISSUE No	1	2	3	CHECKED	APPROVED
	ALTER <sup>N</sup> No	MOO. No AGS/603	AGS/853	MOO. No AGS/909	<i>Shetty</i>	<i>10/12</i> 13-7-45.

**OBSOLESCE**

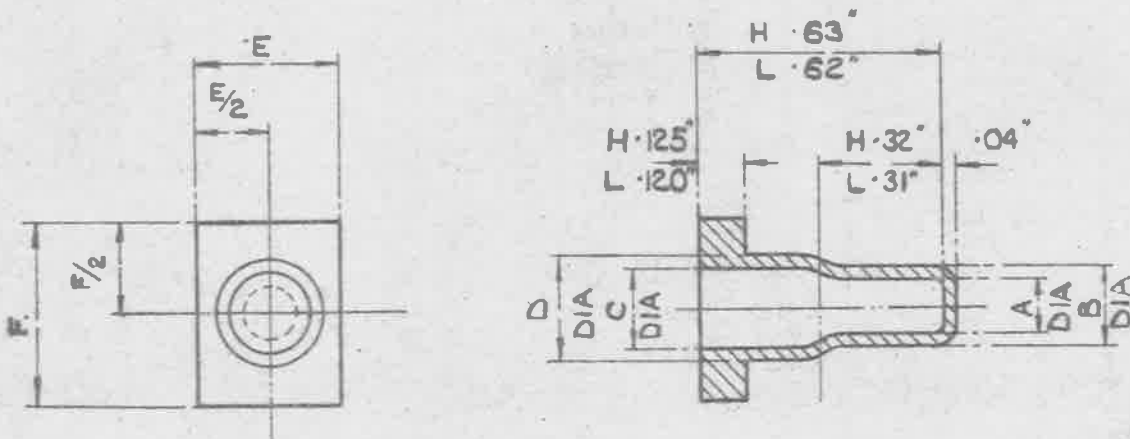
MINISTRY OF  
SUPPLY

AGS.No.1762.

NOT TO BE USED FOR NEW DESIGNS.  
TYPE B, NO FURTHER MANUFACTURE.

SHEET No. 1

NO. OF SHEETS 1



A.G.S. N <sup>o</sup>	MARK	REF. N <sup>o</sup>	A	B	C	D	E	F
1762/A	1	5K/2711	.140"	.210"	.185"	.255"	.380"	.480"
			.135"	.200"	.180"	.245"	.375"	.475"
1762/B	2	5K/2712	.195"	.270"	.225"	.300"	.425"	.480"
			.190"	.260"	.220"	.290"	.420"	.475"

NOTE: - FOR TYPES OF CABLES COVERED BY

ABOVE SLEEVES AND DETAILS OF MOULDING

RECESSES, SEE S.I.S. 5428.

MATERIAL - SPEC. D.T.D. 552 GRADE A.

NOTE :- THE A.G.S. N<sup>o</sup> IS TO BE MOULDED ON EACH SLEEVE

BASED ON DRG. EL.28985.

ISSUED BY THE ROYAL AIRCRAFT ESTABLISHMENT	TITLE:- SLEEVES, CABLE, SINGLE. (WEATHER PROOFING)				DRAWN <i>HGS</i>	TRACED P.N. 5-7-45.	
	ISSUE N <sup>o</sup>	1	2	3	4	CHECKED <i>Shetty</i>	APPROVED <i>MMR</i>
	ALTER <sup>n</sup> N <sup>o</sup>	MOD. N <sup>o</sup> AS/AGS AGS/603	853	MOD. N <sup>o</sup> MOD/AGS AGS/904	1007		13-7-45.

3M914-