

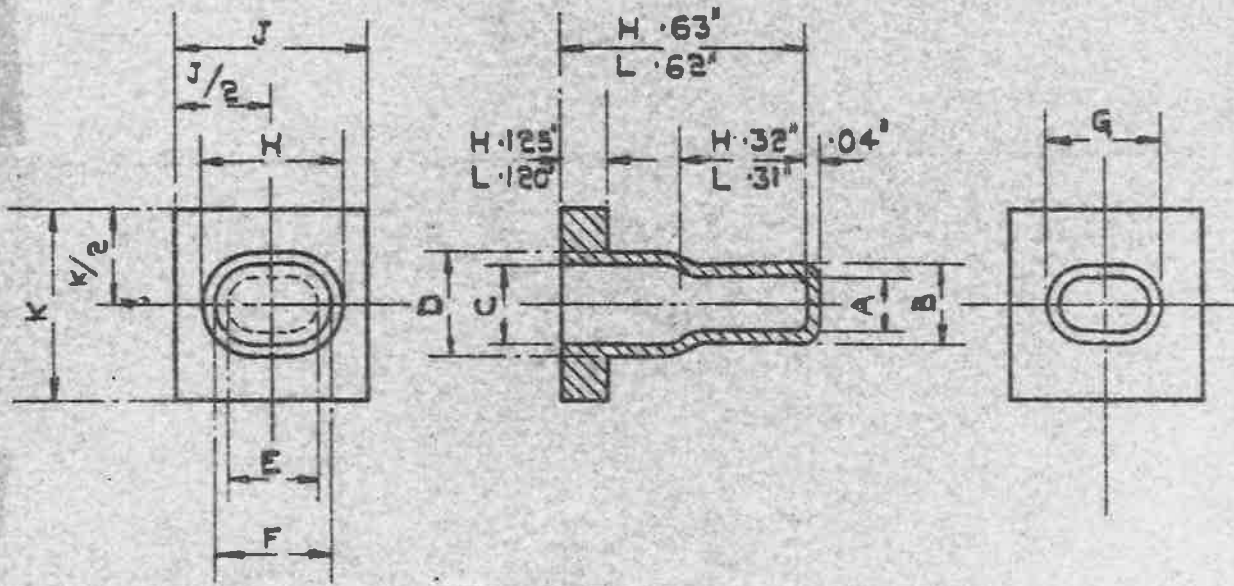
* TYPE B. OBSOLESCEMENT.
NO FURTHER MANUFACTURE

MINISTRY OF
SUPPLY

AGS No. 1763.

SHEET No. 1

No. OF SHEETS 1



AGS. N ^o	MARK	REF. N ^o	A	B	C	D	E	F	G	H	J	K
1763/A	3	5K/2713	.140"	.210"	.205"	.275"	.235"	.305"	.310"	.380"	.505"	.500"
			.135"	.200"	.200"	.265"	.230"	.295"	.305"	.370"	.500"	.495"
1763/B		5K/2714	.195"	.270"	.245"	.315"	.340"	.415"	.390"	.465"	.605"	.600"
			.190"	.260"	.235"	.305"	.335"	.405"	.380"	.455"	.600"	.595"

*
SEE
NOTE
ABOVE

NOTE :- FOR TYPES OF CABLES COVERED BY
ABOVE SLEEVES & DETAILS OF MOULDING
RECESSES, SEE S.I.S. 5428.

MATERIAL :- SPEC: D.T.D. 552. GRADE A.

NOTE :- THE AGS. N^o IS TO BE MOULDED ON EACH SLEEVE.

BASED ON DRG. EL. 28986.

ISSUED BY THE ROYAL AIRCRAFT ESTABLISHMENT	TITLE: SLEEVES, CABLE, TWIN. (WEATHERPROOFING)				DRAWN H.G.S.	TRACED J.B.B. 6-7-45
	ISSUE N ^o	1	2	3	CHECKED G.H.B.	APPROVED J.M.R. 12-7-45
	ALTER ⁿ N ^o	MOD. N ^o AGS/603	AS/AGS 853	MOD. N ^o AGS/308 SM560		

OBSOLESCE

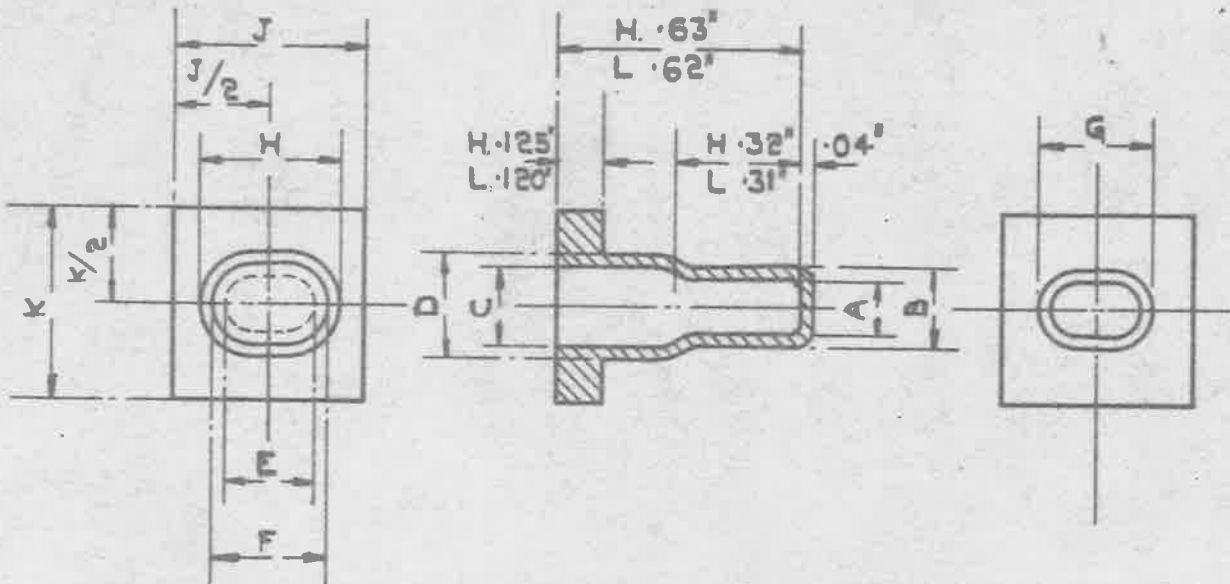
NOT TO BE USED FOR NEW DESIGNS.
TYPE B, NO FURTHER MANUFACTURE.

MINISTRY OF
SUPPLY

AGS.No.1763.

SHEET No.1

No. OF SHEETS 1



AGS.N°	MARK	REF. N°	A	B	C	D	E	F	G	H	J	K
1763/A	3	5K/2713	.140"	.210"	.205"	.275"	.235"	.305"	.310"	.380"	.505"	.500"
			.135"	.200"	.200"	.265"	.230"	.295"	.305"	.370"	.500"	.495"
1763/B		5K/2714	.195"	.270"	.245"	.315"	.340"	.415"	.390"	.465"	.605"	.600"
			.190"	.260"	.235"	.305"	.335"	.405"	.380"	.455"	.600"	.595"

NOTE :- FOR TYPES OF CABLES COVERED BY ABOVE SLEEVES & DETAILS OF MOULDING RECESSES, SEE S.I.S. 5428.

MATERIAL :- SPEC. D.T.D. 552. GRADE A.

NOTE :- THE AGS. N° IS TO BE MOULDED ON EACH SLEEVE.

BASED ON DRG. EL. 28986.

ISSUED BY THE ROYAL AIRCRAFT ESTABLISHMENT	TITLE:- SLEEVES, CABLE, TWIN. (WEATHERPROOFING)				DRAWN <i>H.G.S.</i>	TRACED J.B.B. 6-7-45.	
	ISSUE N°	1	2	3	4	CHECKED	APPROVED
	ALTER. N°	MOD. N° AGS/803	AGS/853	MOD. N° AGS/905	MOD. N° 1007	<i>Shaffer</i>	<i>J.M.L.</i> 13-7-45