

AGS. NO.	MARK	REF. NO.	A	B	C	D	E.	F.
1764/A	4	5K/2715	.140"	.210"	.185"	.255"	.505"	.500"
			.135"	.200"	.180"	.245"	.500"	.495"
1764/B		5K/2716	.195"	.270"	.225"	.300"	.605"	.600"
			.190"	.260"	.220"	.290"	.600"	.595"

NOTE:- FOR TYPES OF CABLES COVERED BY ABOVE SLEEVES AND DETAILS OF MOULDING RECESSES, SEE SIS. 5428

MATERIAL:- SPEC. DTD. 552 GRADE A.

NOTE:- THE AGS. NO IS TO BE MOULDED ON EACH SLEEVE.

BASED ON DRG. EL. 29043

ISSUED BY THE ROYAL AIRCRAFT ESTABLISHMENT.

TITLE:- SLEEVES, CABLE, SINGLE. WEATHERPROOFING (WITH TWIN CABLE FLANGES)

DRAWN *H.S.*

TRACED I.D.G. 7.45

ISSUE NO

1 - 2

CHECKED *S.H.*

APPROVED *S.H.*

ALTER. NO

MOD. NO. AS/AGS

5M459

OBSOLESCE

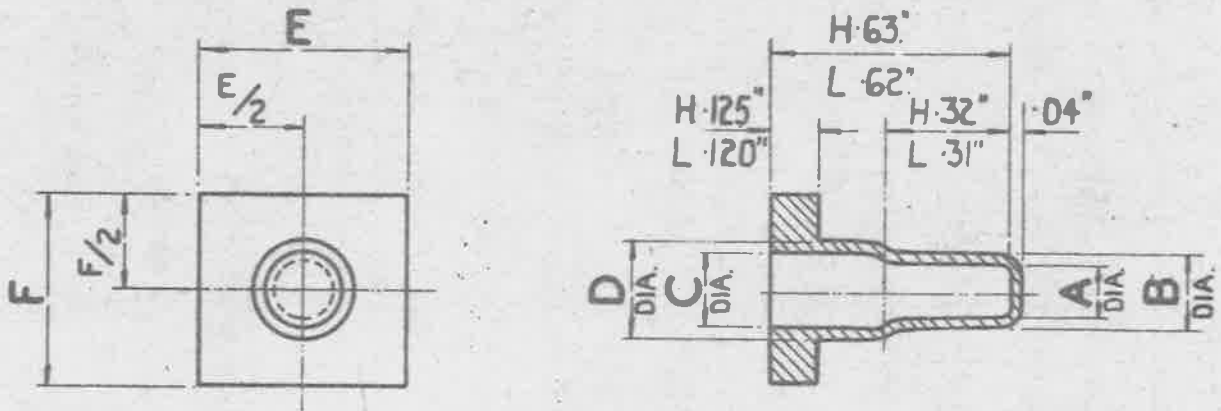
NOT TO BE USED FOR NEW DESIGNS.
TYPE B, NO FURTHER MANUFACTURE.

MINISTRY OF
SUPPLY

AGS.No.1764

SHEET No. 1

No. OF SHEETS 1



A.G.S. No	MARK	REF. No	A	B	C	D	E	F
1764/A	4	5K/2715	.140"	.210"	.185"	.255"	.505"	.500"
			.135"	.200"	.180"	.245"	.500"	.495"
1764/B		5K/2716	.195"	.270"	.225"	.300"	.605"	.600"
			.190"	.260"	.220"	.290"	.600"	.595"

NOTE:- FOR TYPES OF CABLES COVERED BY ABOVE SLEEVES AND DETAILS OF MOULDING RECESSES, SEE SIS. 5428

MATERIAL:- SPEC. DTD. 552 GRADE A.

NOTE:- THE A.G.S. No IS TO BE MOULDED ON EACH SLEEVE.

BASED ON DRG. EL. 29043

ISSUED BY THE ROYAL AIRCRAFT ESTABLISHMENT.	TITLE:- SLEEVES, CABLE, SINGLE. WEATHERPROOFING (WITH TWIN CABLE FLANGES)				DRAWN <i>H/S.</i>	TRACED I.D.G.7.45	
	ISSUE No	1	2	3	4	CHECKED <i>Shipley.</i>	APPROVED <i>JMR</i> 13.7.45
	ALTER ^N No	MOD. No AS/AGS AGS/603	853	MOD. No MOD/AGS AGS/905	1007		