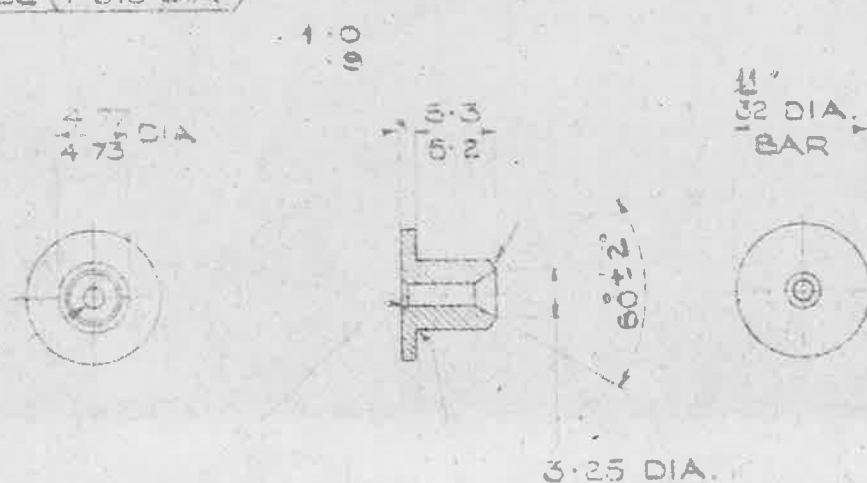


13  
 BASED ON DRAWING N° C X 105747  
 B.T.H. Co LTD COVENTRY

A.G.S. 1767.

N° 53 DRILL (1.515 DIA)

5 CHAMFER AT  $45^\circ \pm 2^\circ$



CSK .5 DEEP AT  $90^\circ \pm 5^\circ$

SHARP CORNER  
 MAX. RAD .5

SCALE:- 2/1

MATERIAL:- BRASS TO B.S SPEC N° 249 OR 251 (LATEST ISSUE)

FINISH:- ELECTRO-TINNED TO SPEC: DTD 904 (LATEST ISSUE)

STORES REF N° SK/2812

NOTE:- DIMENSIONS ARE IN MILLIMETRES UNLESS OTHERWISE STATED

NOTE:- ALL UNLIMITED MACHINED SURFACES TO BE WITHIN LIMITS  $\pm .01$  OR  $25 \mu m$

TITLE:- CABLE END FITTING FOR  
 MAGNETO LOW TENSION CONNECTION

ISSUE	1						
ALT N°	MOD N° AGS/765						

MINISTRY OF SUPPLY

R.A.E. APPROVAL		AD. S.A.E. APPROVAL	
SIGNATURE	DATE	SIGNATURE	DATE
<i>[Signature]</i>	13.5.49	<i>[Signature]</i>	30/7/49

APPLICATIONS FOR A.G.S. SHEETS TO:-  
 ATR 4A THAMES HOUSE, MILLBANK, S.W.1.

GENERAL INQUIRIES TO:-  
 AD. S.A.E. THAMES HOUSE, MILLBANK, S.W.1.

SHEET N°	1	A.G.S. N° 1767.
N° OF SHEETS	1	