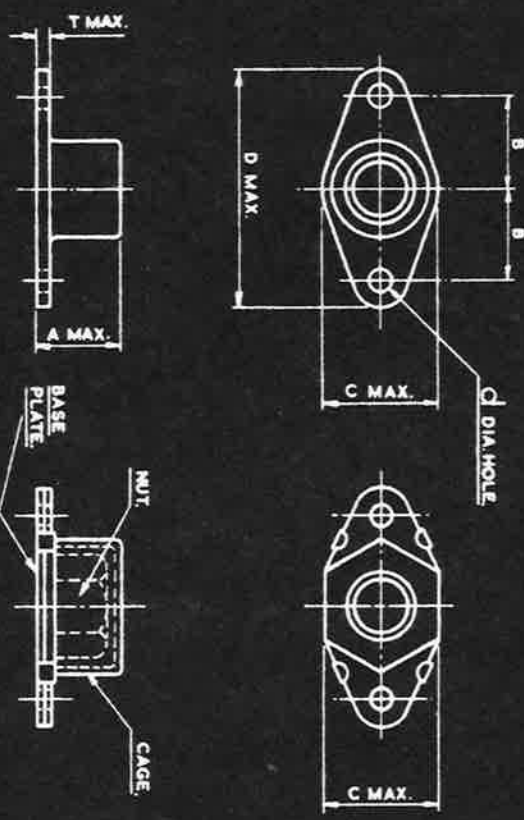


S M 2166

AGS. 2007

THE APPLICATION OF THIS A.G.S. IS EXPLAINED ON A.G.S. 2000.

10	F48.
11	T01
12	F165
13	S19



THIS PART MAY BE MADE AS ONE UNIT, NUT INTEGRAL WITH CAGE OR SUPPLIED AS AN ASSEMBLY WITH CAGE, BASE PLATE AND NUT.

IT IS NOT PERMISSIBLE TO CALL UP THE CAGE AND BASE PLATE AND NUT WITH DIFFERENT SUFFIX NUMBERS.

EXAMPLE FOR CALLING UP:-
A 2 B.A. ALUMINUM ALLOY DOUBLE ANCHOR
NUT-THICK IS DESIGNATED AS A.G.S. 2007/C/3.

B.A. THREADS TO B.S. SPEC. 93.
B.S.F. THREADS TO B.S. SPEC. 84 FREE FIT.

SIZE	MARK No.	A MAX.	B	C MAX.	d	D MAX.	T MAX.
6 B.A.	A	.241"	.2525" .2475"	.270"	.065"	.700"	.056"
4 B.A.	B	.284"	.3525" .3475"	.380"	.096"	.940"	.065"
2 B.A.	C	.350"	.3525" .3475"	.430"	.096"	.950"	.065"
1/4 B.S.F.	† E	.402"	.5025" .4975"	.580"	.096"	1.320"	.072"
5/16 B.S.F.	† G	.473"	.5525" .5475"	.612"	.128"	1.430"	.072"
3/8 B.S.F.	† J	.548"	.5525" .5475"	.700"	.128"	1.430"	.082"
7/16 B.S.F.	† L	.629"	.6275" .6225"	.792"	.128"	1.650"	.082"
1/2 B.S.F.	† N	.721"	.7025" .6975"	.912"	.128"	1.800"	.082"

ITEMS MARKED † OBSOLETE SUPERSEDED FOR NEW DESIGN WORK BY UNIFIED THREAD STIFFNUTS IN THE SERIES B.S. A125-201.

SPEC. CAGE AND BASE.

SUFFIX No.	MATL.	SPEC.	FINISH.
1	MILD STEEL	BS 510 OR S 511	CADMIUM PLATED D.T.D. 904
2	NON-CORRODIBLE STEEL OR INVAR		
3	ALUM. ALLOY	D.T.D. 192	Δ
4	BRASS	B.S. 409	ELECTRO TINNED D.T.D. 924

SPEC. NUT.

SUFFIX No.	MATL.	SPEC.	FINISH.
1	MILD STEEL	S.1 S.112 OR S.113	CADMIUM PLATED D.T.D. 904
2	NON-CORRODIBLE STEEL	S. 80	CADMIUM PLATED D.T.D. 904
3	ALUM. ALLOY	OR B.S. L65	Δ
4	BRASS OR BRONZE	B.11 OR B.S. 249 OR B.S. 281 B.S. 369	ELECTRO TINNED D.T.D. 924

Δ ANODISED IN ACCORDANCE WITH SPEC. DTD. 910 AND DYED BLUE e.g. SOLWAY BLUE S.E.S. IS A SUITABLE DYE.

DESIGNED BY THE SOCIETY OF BRITISH AERIALTY CONSTRUCTORS LTD. 14, KING STREET, ST. MARTIN, LONDON, E.C.1.

DESIGNED	DRAWN	TRACED	CHECKED
F.A.L.	F.A.L.	F.A.L.	F.A.L.

HT

PT

SEE ABOVE

THIRD ANGLE PROJECTION

DIR. C. 870