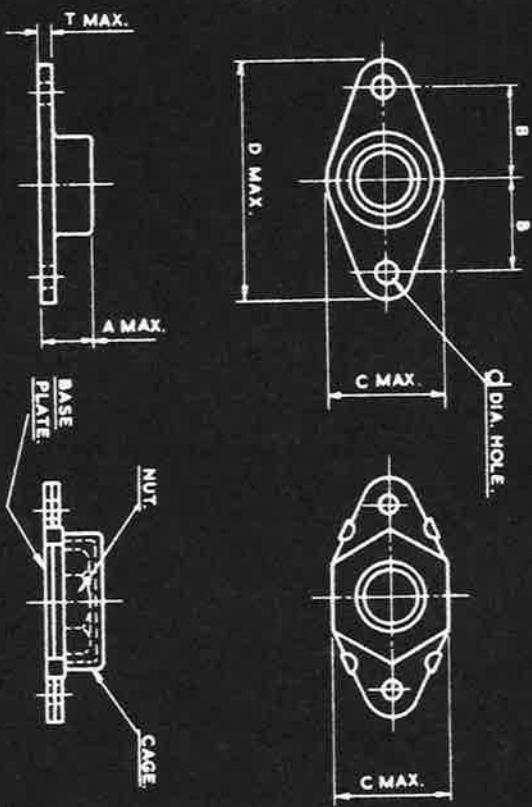


SM 2166

AG.S. 2008

THE APPLICATION OF THIS AG.S. IS EXPLAINED ON AG.S. 2000.



THIS PART MAY BE MADE AS ONE UNIT, NUT INTEGRAL WITH CAGE OR SUPPLIED AS AN ASSEMBLY WITH CAGE, BASE PLATE AND NUT.

IT IS NOT PERMISSIBLE TO CALL UP THE CAGE AND BASE PLATE AND NUT WITH DIFFERENT SUFFIX NUMBERS.

EXAMPLE FOR CALLING UP:-  
A. 2BA. ALUMIUM ALLOY DOUBLE ANCHOR NUT-THIN IS DESIGNATED AS AG.S. 2008/C/3.

B.A. THREADS TO B.S. SPEC. 93.  
B.S.F. THREADS TO B.S. SPEC. 84 FREE FIT.

SIZE	MARK No.	A MAX.	B	C MAX.	d	D MAX.	T MAX.
6 B.A.	A	.201"	.2525" .2475"	.270"	.065"	.700"	.056"
4 B.A.	B	.237"	.3525" .3475"	.380"	.096"	.940"	.065"
2 B.A.	C	.290"	.3525" .3475"	.430"	.096"	.950"	.065"
1/4 B.S.F.	E	.335"	.5025" .4975"	.580"	.098"	1.320"	.072"
5/16 B.S.F.	G	.397"	.5525" .5475"	.612"	.128"	1.420"	.072"
3/8 B.S.F.	J	.445"	.5525" .5475"	.700"	.128"	1.420"	.082"
7/16 B.S.F.	L	.504"	.6275" .6225"	.792"	.128"	1.650"	.082"
1/2 B.S.F.	N	.565"	.7025" .6975"	.912"	.128"	1.800"	.082"

ITEMS MARKED + OBSOLESCENT SUPERSEDED FOR NEW DESIGN WORK BY UNIFIED THREAD STIFFNUTS IN THE SERIES B.S. A125-201.

SPEC. CAGE AND BASE.

SUFFIX No.	MATL.	SPEC.	FINISH.
1	MILD STEEL	STD OR 5111	CADMIUM PLATED D.T.D. 904
2	NON-CORRODIBLE STEEL OR MONEL	D.T.D. 108	
3	ALUMIUM ALLOY	D.T.D. 182	Δ
4	BRASS	B.S. 409	ELECTRO TINNED D.T.D. 924

SPEC. NUT.

SUFFIX No.	MATL.	SPEC.	FINISH.
1	MILD STEEL	S.1 S.112 OR S.113	CADMIUM PLATED D.T.D. 904
2	NON-CORRODIBLE STEEL	S. 80	CADMIUM PLATED D.T.D. 904
3	ALUMIUM ALLOY	OR B.S. 145	Δ
4	BRASS OR BRONZE	B.11 OR B.S. 249 OR B.S. 251 OR B.S. 249	ELECTRO TINNED D.T.D. 924

Δ ANODISED IN ACCORDANCE WITH SPEC. D.T.D. 910 AND DYED BLUE. 99 SOLWAY BLUE S.E.S. 158A SUITABLE DYE

DESIGNED BY THE PROPERTY OF BRITISH ALUMINIUM INDUSTRIES LTD. 18, KING STREET, ST. AMBROSE, LONDON, E.C.4.

DESIGNED	DRAWN	TRACED	CHECKED	APPROVED FOR	DATE
F.A.L.	F.A.L.	F.A.L.	F.A.L.		

HT

PT	SEE ABOVE	SCALE	LIGHT AND SHOWN	THIRD ANGLE PROJECTION
				AG.S. 2008