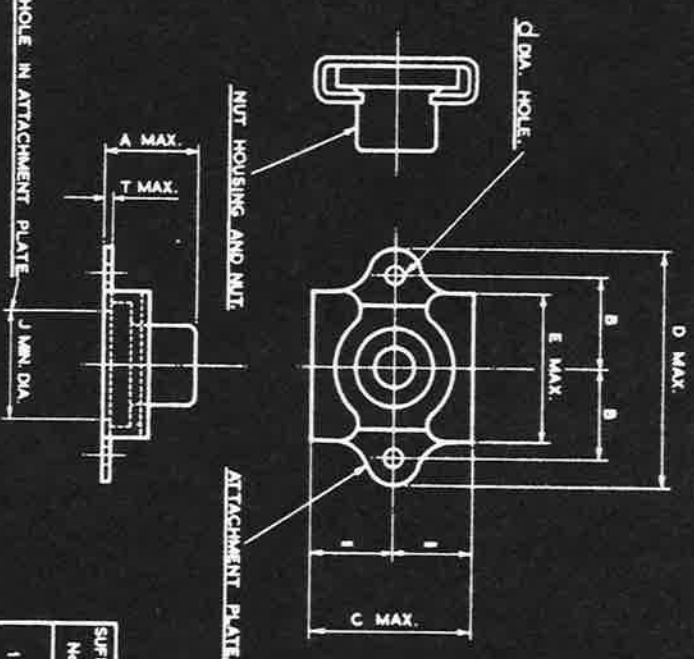


S.M. 2/66

AGS. 2012

THE APPLICATION OF THIS AGS. IS EXPLAINED ON AGS. 2000.



SIZE	MARK No.	A MAX.	B	C MAX.	d	D MAX.	E MAX.	J MIN.	T MAX.
6 BA.	A	.230	.2525 .2475	.432	.065	.700	.385	.140	.036
4 BA.	B	.284	.3525 .3475	.605	.096	.950	.525	.167	.036
2 BA.	C	.350	.3525 .3475	.605	.096	.950	.525	.225	.036
1/4 B.S.F.	+ E	.394	.5025 .4975	.776	.096	1.315	.710	.305	.036
1/8 B.S.F.	+ G	.473	.5525 .5475	1.020	.128	1.420	.910	.360	.036

ITEMS MARKED + OBSOLETE SUPERSEDED FOR NEW DESIGN WORK BY UNIFIED THREAD STIFFNUTS IN THE SERIES B.S. A125-201.

MATERIAL.

THE MATERIAL OF THE ATTACHMENT PLATE SHOWN BY THE FIRST DIGIT OF THE SUFFIX TO THE PART NUMBER IS EITHER MILD STEEL OR ALUMINE ALLOY. THE NUT AND NUT HOUSING ARE ALWAYS OF THE SAME MATERIAL SHOWN BY THE SECOND DIGIT OF THE SUFFIX IN CONJUNCTION WITH THE TABLE BELOW.

MATERIAL FOR ATTACHMENT PLATE.			MATERIAL FOR NUT AND NUT HOUSING.		
SUFFIX No.	MATL.	FINISH.	SUFFIX No.	MATL.	FINISH.
1	MILD STEEL	CADMIUM PLATED D.T.D. 904	1	MILD STEEL	CADMIUM PLATED D.T.D. 904
2	NON-CORRODIBLE STEEL		2	NON-CORRODIBLE STEEL OR MONEL	CADMIUM PLATED D.T.D. 904
3	ALUMINE ALLOY		3	ALUMINE ALLOY	CADMIUM PLATED D.T.D. 904
4	ALUMINE ALLOY		4	BRASS OR BRONZE	ELECTRO TINNED D.T.D. 924

△ ANOURED IN ACCORDANCE WITH SPEC. D.T.D. 910 AND DYED BLUE. E.G. SOLWAY BLUE SES. IS A SUITABLE DYE.

THE NUT AND NUT HOUSING MAY BE MADE SEPARATELY OR AS ONE PIECE.
EXAMPLE FOR CALLING UP-
A 2 BA. FLOATING ANCHOR NUT WITH ATTACHMENT PLATE IN ALUMINE ALLOY AND NUT AND NUT HOUSING IN MILD STEEL IS DESIGNATED AS AGS. 2012/C/31.
B.A. THREADS TO B.S. SPEC. 93.
B.S.F. THREADS TO B.S. SPEC. 94 FREE FIT.

DESIGNED BY THE SOCIETY OF BRITISH ALUMINIUM CONSTRUCTORS LTD., 18, KING STREET, ST. JAMES, LONDON, W. 1.

DESIGNED	DRAWN	TRACED	CHECKED	APPROVED FOR	DATE
F.A.L.	F.A.L.	F.A.L.	F.A.L.	16-5-66	

HT PT SEE ABOVE SCALE LIMITS NOT BROWN THIRD ANGLE PROJECTION

STIFFNUTS-FLOATING ANCHOR - THICK AGS. 2012