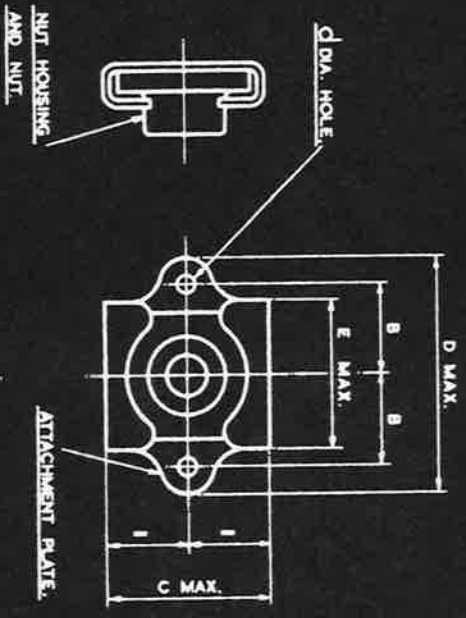


SM 2166

AGS. 2013

THE APPLICATION OF THIS AGS. IS EXPLAINED ON AGS. 2000.

11	F.45.
12	F101
13	F.43
14	F.128



THE NUT AND NUT HOUSING MAY BE MADE SEPARATELY OR AS ONE PIECE.

EXAMPLE FOR CALLING UP:-
 A 2 BA. FLOATING ANCHOR NUT WITH ATTACHMENT PLATE IN ALUMINUM ALLOY AND NUT AND NUT HOUSING IN MILD STEEL IS DESIGNATED AS AGS. 2013/C/31.
 BA. THREADS TO B.S. SPEC. 93.
 B.S.F. THREADS TO B.S. SPEC. 84 FREE FIT.

SIZE	MARK No.	A MAX.	B	C MAX.	d	D MAX.	E MAX.	J MIN	T MAX.
6 BA.	A	.200	.5525 .2475	.432	.065	.700	.385	.140	.036
4 BA.	B	.240	.5525 .475	.605	.096	.950	.525	.167	.036
2 BA.	C	.290	.5525 .475	.605	.096	.950	.525	.225	.036
1/2 B.S.F.	+ E	.327	.5025 .475	.776	.096	1.315	.710	.305	.036
5/8 B.S.F.	+ G	.390	.5525 .475	1.020	.128	1.420	.910	.360	.036
3/4 B.S.F.	+ J	.450	.6025 .5975	1.115	.128	1.562	.965	.420	.048

ITEMS MARKED + OBSOLETE SUPERSEDED FOR NEW DESIGN WORK BY UNIFIED THREAD STIFFNUTS IN THE SERIES B.S. A773-201.

THE MATERIAL OF THE ATTACHMENT PLATE SHOWN BY THE FIRST DIGIT OF THE SUFFIX TO THE PART NUMBER, IS EITHER MILD STEEL OR ALUMINUM ALLOY. THE NUT AND NUT HOUSING ARE ALWAYS OF THE SAME MATERIAL, SHOWN BY THE SECOND DIGIT OF THE SUFFIX, IN CONJUNCTION WITH THE TABLE BELOW.

MATERIAL FOR ATTACHMENT PLATE.			MATERIAL FOR NUT AND NUT HOUSING.				
SUFFIX No.	MATL.	SPEC.	SUFFIX No.	MATL.	SPEC. FOR NUT.	SPEC. FOR HOUSING.	FINISH.
1	MILD STEEL	S.112 OR S.113	1	MILD STEEL	S.112 OR S.113	S.510 OR S.511	CADMIUM PLATED DTD. 904
2	NON-CORROSION STEEL OR MONEL	S.80	2	NON-CORROSION STEEL OR MONEL	S.80	S.510 OR S.511	CADMIUM PLATED DTD. 904 [NUTS ONLY]
3	ALUMINUM ALLOY	DTD. 423 OR B.S. L.45	3	ALUMINUM ALLOY	DTD. 423 OR B.S. L.45	L.85 OR L.65	Δ
4	BRASS OR BRONZE	B.111 OR B.S.249 OR B.S. 251 OR B.S. 269	4	BRASS OR BRONZE	B.111 OR B.S.249 OR B.S. 251 OR B.S. 269	B.S. 409	ELECTRO TINNED DTD. 924

Δ ANODISED IN ACCORDANCE WITH SPEC. DTD. 910 AND DYED BLUE.
 59-50-WAY BLUE SES. IS A SUITABLE DYE.

DESIGNED BY	DAVAN	TACED	CHECKED	DATE	HT	PT	SCALE	THIRD ANGLE PROJECTION
DESIGNED BY	F.A.L.	F.A.L.	F.A.L.	DATE	HT	PT	SCALE	THIRD ANGLE PROJECTION
DESIGNED BY	F.A.L.	F.A.L.	F.A.L.	DATE	HT	PT	SCALE	THIRD ANGLE PROJECTION

ISSUED BY THE PROPERTY OF BRITISH AIRCRAFT CONSTRUCTION LTD.
 28, KING STREET, ST. ALBANS, LONDON, S.W.1.