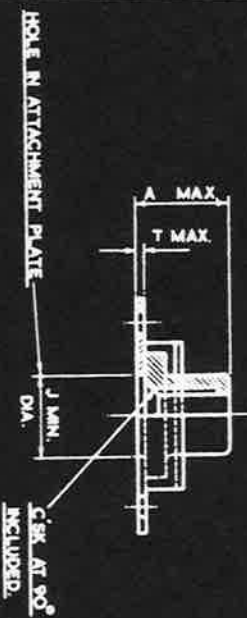
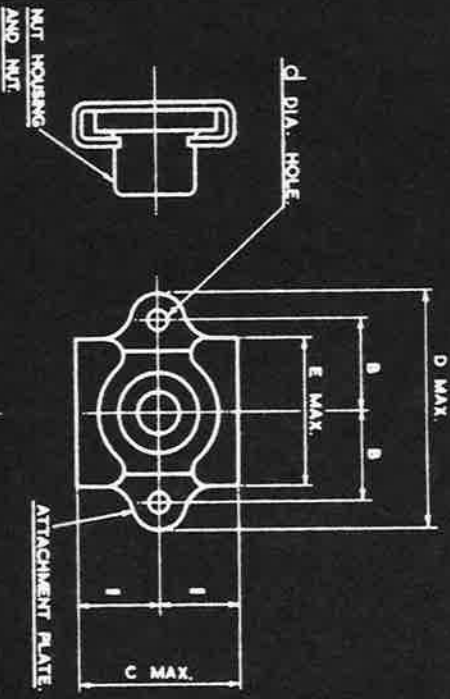


SM 2166

AGS 2014

THE APPLICATION OF THIS AGS IS EXPLAINED ON AGS 2000.



THE NUT AND NUT HOUSING MAY BE MADE SEPARATELY OR AS ONE PIECE.  
 EXAMPLE FOR CALLING UP:-  
 A 2 BA FLOATING ANCHOR NUT WITH ATTACHMENT PLATE IN ALUMINUM ALLOY AND NUT AND NUT HOUSING IN MILD STEEL IS DESIGNATED AS AGS 2014/C/1A1  
 BA. THREADS TO B.S. SPEC. 92.  
 B.S.F. THREADS TO B.S. SPEC. 94 FREE FIT.

SIZE.	MARK. No.	A MAX.	B	C MAX.	d	D MAX.	E MAX.	J MIN.	T MAX.
6 BA.	A	.230"	.2525" .2475"	.432"	.065"	.700"	.385"	.140"	.036"
4 BA.	B	.284"	.3225" .3175"	.605"	.096"	.950"	.525"	.167"	.036"
2 BA.	C	.350"	.3525" .3475"	.905"	.096"	.950"	.525"	.225"	.036"
1/4 B.S.F.	E	.394"	.5025" .4975"	.776"	.096"	1.315"	.710"	.305"	.036"
1/8 B.S.F.	G	.473"	.5525" .5475"	1.020"	.128"	1.420"	.910"	.360"	.036"
3/8 B.S.F.	J	.490"	.6025" .5975"	1.115"	.128"	1.562"	.965"	.420"	.048"

ITEMS MARKED + OBSCURE SUPPLEMENTED FOR NEW DESIGN WORK BY UNIFIED THREAD STEFNUTS IN THE SERIES B.S. A125-201.

MATERIAL OF THE ATTACHMENT PLATE SHOWN BY THE FIRST DIGIT OF THE SUFFIX TO THE PART NUMBER IS EITHER MILD STEEL OR ALUMINUM ALLOY. THE NUT AND NUT HOUSING ARE ALWAYS OF THE SAME MATERIAL SHOWN BY THE SECOND DIGIT OF THE SUFFIX IN CONJUNCTION WITH THE TABLE BELOW.

SUFFIX No.	MATL.	SPEC.	FINISH.
1	MILD STEEL	5310 OR 5311	CADMIUM PLATED DTD. 904
2	NON-CORROSIVE STEEL OR MONEL	5.80	CADMIUM DTD. 904 (NUTS ONLY)
3	ALUMINUM ALLOY	DTD. 423 OR B.S. L65	ALUMINUM DTD. 904 (NUTS ONLY)
4	BRASS OR BRONZE	B.11 OR B.S.251 OR B.S. 369	ELECTRO THINED DTD. 924

Δ ANODISED IN ACCORDANCE WITH SPEC. DTD. 910 AND DYED BLUE.  
 † SOILWAY BLUE SEE IS A SUITABLE DYE.

DESIGNED BY THE SOCIETY OF BRITISH MANUFACTURING ENGINEERS LTD., 16, KING STREET, ST. AMBLET, LONDON, S.W.1.

DESIGNED	DRAWN	TRACED	CHECKED
F.A.L.	F.A.L.	F.A.L.	F.A.L.

HT

PT SEE ABOVE

STEFNUTS - FLOATING ANCHOR - COUNTERSINK

THIRD ANGLE PROJECTION

AGS 2014