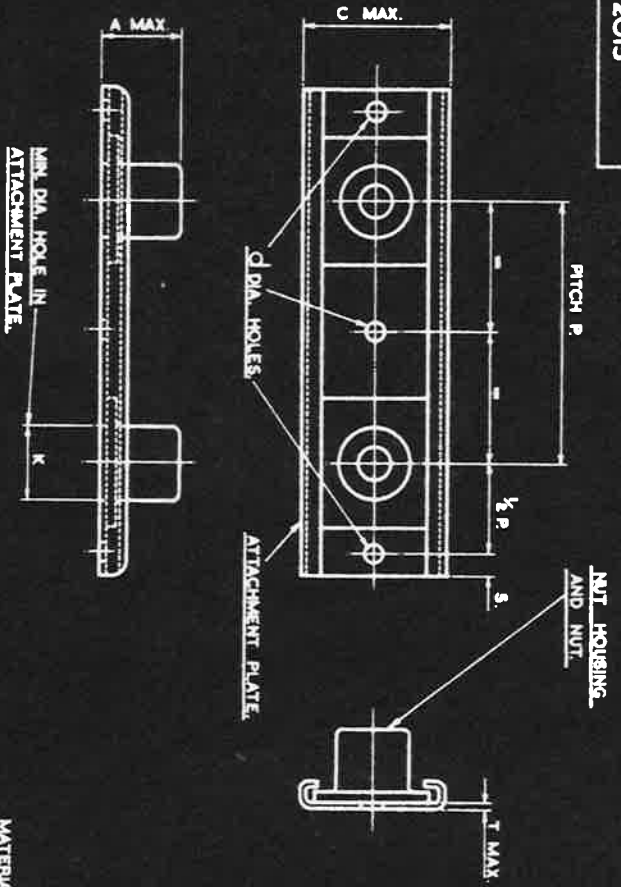


SM 2166

AGS. 2015

10	F45
11	F101
12	F125
13	F175



THE NUT AND NUT HOUSING MAY BE MADE SEPARATELY OR AS ONE PIECE.

THE APPLICATION OF THIS AGS. IS EXPLAINED ON AGS. 2000.

EXAMPLE FOR CALLING UP:-

A 2 BA STRIPPnut WITH ATTACHMENT PLATE IN ALUMINUM ALLOY AND NUT AND NUT HOUSING IN MILD STEEL AT 2.0 PITCH COMPRISING 25 PITCHES IS DESIGNATED AGS. 2015/C/S1/2" PITCH/25 [NOTE THAT THE FIRST FIGURE AFTER THE SIZE LETTER C STANDS FOR ATTACHMENT PLATE MATERIAL AND THE SECOND FIGURE FOR NUT AND NUT HOUSING MATERIAL.]

THE OVERALL LENGTH IN EXAMPLE QUOTED IS 25 PITCHES + TWICE [1/2 P] + TWICE [S] TOTALLING 52 + TWICE [S].

BA THREADS TO B.S. SPEC. 93.

B.S.F. THREADS TO B.S. SPEC. 94 FREE FIT.

SIZE	MARK No.	P	A MAX.	C MAX.	D	K	T MAX.	S MIN.
4 BA	B	1.2, 3"	.280"	.600"	.096"	.172"	.028"	.250"
2 BA	C	1.2, 3"	.345"	.600"	.096"	.234"	.028"	.250"
1/2 B.S.F.	E	1.2, 3"	.390"	.765"	.096"	.312"	.028"	.250"
3/8 B.S.F.	G	1.2, 3"	.473"	1.020"	.128"	.375"	.036"	.375"

ITEMS MARKED + OBSOLETE SUPERSEDED FOR NEW DESIGN WORK BY UNIFIED THREAD STIFFNUTS IN THE SERIES B.S. A125 - 201.

MATERIAL.

THE MATERIAL OF THE ATTACHMENT PLATE SHOWN BY THE FIRST DIGIT OF THE SUFFIX TO THE PART NUMBER IS EITHER MILD STEEL OR ALUMINUM ALLOY. THE NUT AND NUT HOUSING ARE ALWAYS OF THE SAME MATERIAL SHOWN BY THE SECOND DIGIT OF THE SUFFIX. IN CONJUNCTION WITH THE TABLE BELOW.

MATERIAL FOR ATTACHMENT PLATE				MATERIAL FOR NUT AND NUT HOUSING				
SUFFIX No.	MATL.	SPEC.	FINISH.	SUFFIX No.	MATL.	SPEC. FOR NUT.	SPEC. FOR HOUSING.	FINISH.
1	MILD STEEL	S510	CADMIUM PLATED DTD 904	1	MILD STEEL	E1 S112 OR S113	S510 or S511	CADMIUM PLATED DTD 904
2	NON-DISSIMILAR STEEL OR MONEL	S 90		2	NON-DISSIMILAR STEEL OR MONEL	S 90	DTD 10 B.	CADMIUM DTD 904 [NUTS ONLY]
3	ALUMINUM ALLOY	DTD 182	ANODISED DTD 910	3	ALUMINUM ALLOY	DTD 423 OR B.S. L65	L85 OR L85	Δ
4	BRASS OR BRONZE	B11 OR B.S. 251 OR B.S. 369		4	BRASS OR BRONZE	B11 OR B.S. 251 OR B.S. 369	B.S. 409	ELECTRO TINNED DTD 924

Δ ANODISED IN ACCORDANCE WITH SPEC. DTD 910 AND DYED BLUE.

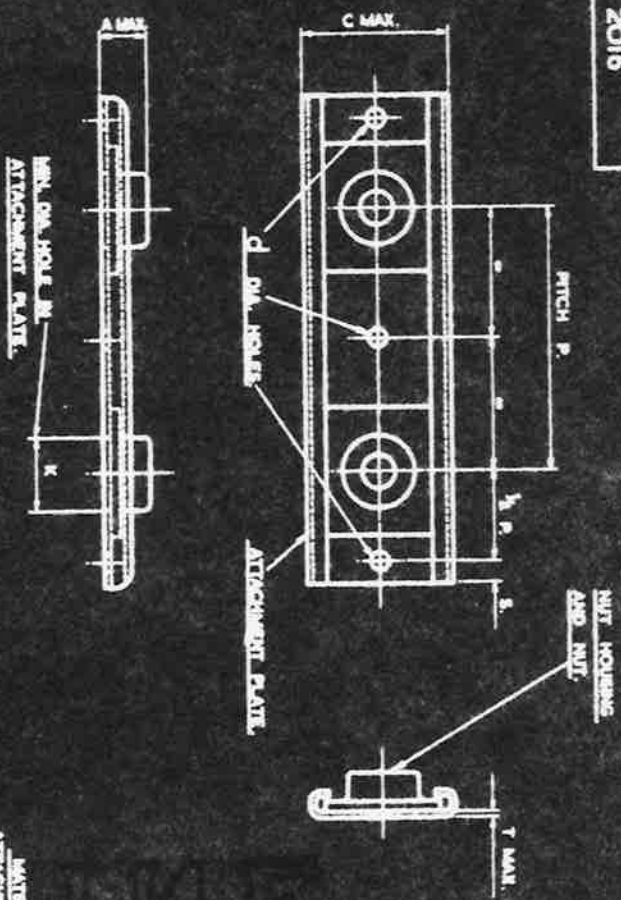
Δg SOLWAY BLUE S.E.S. IS A SUITABLE DYE.

DESIGNED	DRAWN	TRACED	CHECKED	APPROVED	DATE	HT	PT	SEE ABOVE	SCALE	LIMITS	THIRD ANGLE PROJECTION
F.A.L.	F.A.L.	F.A.L.	F.A.L.	F.A.L.	1974-7-7			STIFFNUTS - STRIPPNUTS - THICK.			AGS. 2015

SM 2166

AGS 2016

11	F48
12	F101
13	F115
14	F193



THE NUT AND NUT HOUSING MAY BE MADE SEPARATELY OR AS ONE PIECE.  
THE APPLICATION OF THIS AGS IS EXPLAINED ON AGS 2000.

EXAMPLE FOR CALLING UP:  
A 3 BA STRIPNUT WITH ATTACHMENT PLATE IN ALUMINUM ALLOY AND NUT AND NUT HOUSING IN MILD STEEL AT 2.0" PITCH.  
COMPOSING 25 PITCHES IS DESIGNATED AGS 2016/21/2 PITCH/25  
[NOTE THAT THE FIRST FIGURE AFTER THE SIZE LETTER C STANDS FOR ATTACHMENT PLATE MATERIAL AND THE SECOND FIGURE FOR NUT AND NUT HOUSING MATERIAL.]  
THE OVERALL LENGTH IN EXAMPLE QUOTED IS 25 PITCHES + TWICE  $\frac{1}{2} P$  + TWICE [S] TOTALING 32" + TWICE [S].

B.A. THREADS TO B.S. SPEC. 93.  
B.S.F. THREADS TO B.S. SPEC. 84 FREE FIT.

SIZE	MARK No.	P	A MAX.	C MAX.	d	K MIN.	T MAX.	S MIN.
4 BA.	B	6.1, 2.3	.235	.600	.096	.172	.028	.250
2 BA.	C	6.1, 2.3	.385	.600	.096	.234	.028	.250
1/2 B.S.F.	E	1.2, 3	.328	.765	.096	.312	.028	.250
1/8 B.S.F.	G	1.2, 3	.400	1.020	.128	.375	.024	.375

ITEMS MARKED + OBSOLETE SUPPLEMENT FOR NEW DESIGN WORK BY UNIFIED THREAD STRIPNUTS IN THE SERIES BS A175-201.

MATERIAL.  
THE MATERIAL OF THE ATTACHMENT PLATE SHOWN BY THE FIRST DIGIT OF THE SUPPLY TO THE PART NUMBER IS EITHER MILD STEEL OR ALUMINUM ALLOY. THE NUT AND NUT HOUSING ARE ALWAYS OF THE SAME MATERIAL SHOWN BY THE SECOND DIGIT OF THE SUPPLY IN CONNECTION WITH THE TABLE BELOW.

SUPPLY No.	MATL.	SPEC.	FINISH.	SUPPLY No.	MATL.	SPEC. FOR NUT.	SPEC. FOR HOUSING.	FINISH.
1	MILD OR ALUMINUM STEEL	BS10 OR BS11	CADMIUM PLATED DTD. 904	1	MILD STEEL	S1 S12 OR S112	BS10 OR BS11	CADMIUM PLATED DTD. 904
2	NON-CORROSION STEEL	OR MONEL		2	NON-CORROSION STEEL OR MONEL	E 90	BS10 OR BS11	CADMIUM PLATED DTD. 904 [NUTS ONLY]
3	ALUMINUM ALLOY 192	DTD. 910	ANODISED DTD. 910	3	ALUMINUM ALLOY	DTD. 432 OR BS. L45	BS10 OR BS11	ELECTRO TINNED DTD. 924
4	BRASS OR BRONZE			4	BRASS OR BRONZE	BS11 OR BS. 249 OR BS. 251 OR BS. 269	BS. 409	

Δ ANODISED IN ACCORDANCE WITH SPEC. DTD. 910 AND DYED BLUE  
49 SOLWAY BLUE 355 IS A SUITABLE DYE.

DESIGNED BY THE COMPANY OF BRITISH AIRWAYS CORPORATION LTD., 30, KING STREET, ST. ALBANS, HERTS., ENGLAND, U.K.

DESIGNED	DRAWN	TRACED	CHECKED	APPROVED
F.A.L.	F.A.L.	F.A.L.	F.A.L.	F.A.L.

HT DATE

PT SEE ABOVE

THIRD ANGLE PROJECTION

AGS 2016

BS2721/2/20