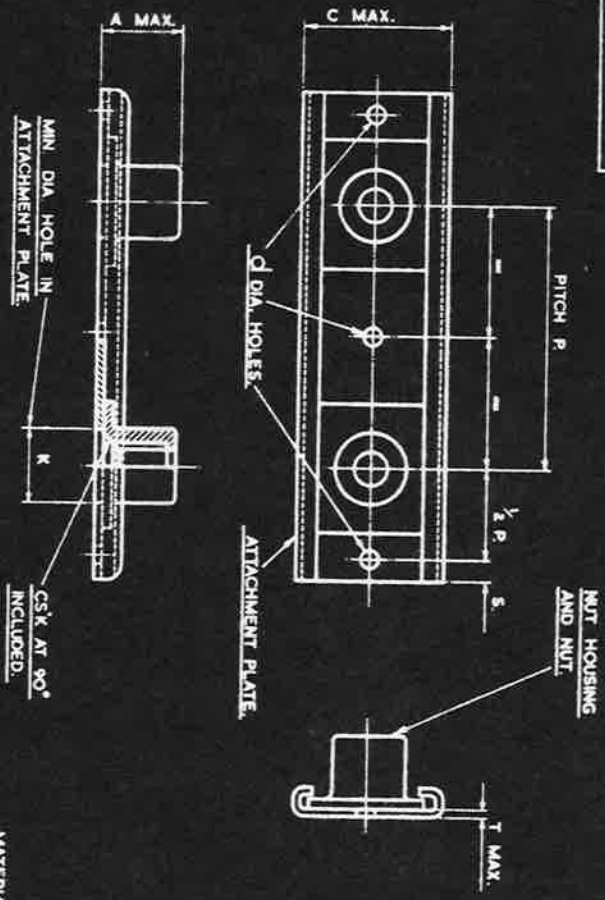


S M 2166

AGS. 2017

11	E101
12	F101
13	F129



THE NUT AND NUT HOUSING MAY BE MADE SEPARATELY OR AS ONE PIECE.  
THE APPLICATION OF THIS AGS. IS EXPLAINED ON AGS. 2000.

EXAMPLE FOR CALLING UP:-  
A 2 BA STRIPNUT WITH ATTACHMENT PLATE IN ALUMINUM ALLOY AND NUT AND NUT HOUSING IN MILD STEEL AT 2.0° PITCH COMPRISING 25 PITCHES IS DESIGNATED AGS. 2017/C/31/2° PITCH/25  
[NOTE THAT THE FIRST FIGURE AFTER THE SIZE LETTER C STANDS FOR ATTACHMENT PLATE MATERIAL AND THE SECOND FIGURE FOR NUT AND NUT HOUSING MATERIAL.]  
THE OVERALL LENGTH IN EXAMPLE QUOTED IS 25 PITCHES + TWICE [1/2 P] + TWICE [S] TOTALLING 52' + TWICE [S].  
BA. THREADS TO B.S. SPEC. 93.  
B.S.F. THREADS TO B.S. SPEC. 84 FREE FIT.

SIZE	MARK No.	P	A MAX.	C MAX.	d	K MIN.	T MAX.	S MIN.
4 BA	B	6, 1, 2, 3	.280	.600	.096	.172	.028	.250
2 BA	C	6, 1, 2, 3	.345	.600	.096	.234	.028	.250
1/2 B.S.F.	E	1, 2, 3	.390	.765	.096	.312	.028	.250
3/8 B.S.F.	G	1, 2, 3	.473	1.020	.128	.375	.036	.375

ITEMS MARKED + OBSOLETE SUPERSEDED FOR NEW DESIGN WORK BY UNIFIED THREAD STIFFNUTS IN THE SERIES B.S. A125-201.

MATERIAL.  
THE MATERIAL OF THE ATTACHMENT PLATE SHOWN BY THE FIRST DIGIT OF THE SUFFIX TO THE PART NUMBER IS EITHER MILD STEEL OR ALUMINUM ALLOY. THE NUT AND NUT HOUSING ARE ALWAYS OF THE SAME MATERIAL SHOWN BY THE SECOND DIGIT OF THE SUFFIX. IN CONJUNCTION WITH THE TABLE BELOW.

MATERIAL FOR ATTACHMENT PLATE.

SUFFIX No.	MATL.	SPEC.	FINISH.
1	MILD STEEL	S510 OR S511	CADMIUM PLATED DTD. 904
3	ALUMINUM ALLOY	DTD. 182	ANODISED DTD. 910

MATERIAL FOR NUT AND NUT HOUSING.

SUFFIX No.	MATL.	SPEC. FOR NUT.	SPEC. FOR HOUSING.	FINISH.
1	MILD STEEL	S1 S112 OR S113	S510 OR S511	CADMIUM PLATED DTD. 904
2	NON-CORRODIBLE OR MONEL	S.80	---	CADMIUM DTD. 904 (NUTS ONLY)
3	ALUMINUM ALLOY	DTD. 423 OR B.S. L65	L65 OR L65.1	Δ
4	BRASS OR BRONZE	BITOR B.S.249 OR B.S. 251	B.S. 409	ELECTRO TINNED DTD. 924

Δ ANODISED IN ACCORDANCE WITH SPEC. DTD. 910 AND DYED BLUE.  
S9 SOLWAY BLUE SES. IS A SUITABLE DYE.

DESIGNED	DRAWN	TRACED	CHECKED	APPROVED FOR	DATE
F.A.L.	F.A.L.	F.A.L.	F.A.L.	[Signature]	1-3-60
STIFFNUTS - STRIPNUTS - COUNTERSINK					
AGS. 2017					
HT	PT	SCALE	LIMIT NOT SHOWN	THIRD ANGLE PROJECTION	

ISSUED BY THE SOCIETY OF BRITISH AIRCRAFT CONSTRUCTORS LTD., 88, FINS STREET, ST. MARKS, LONDON, E.V.1.