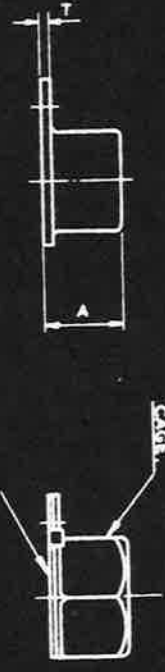
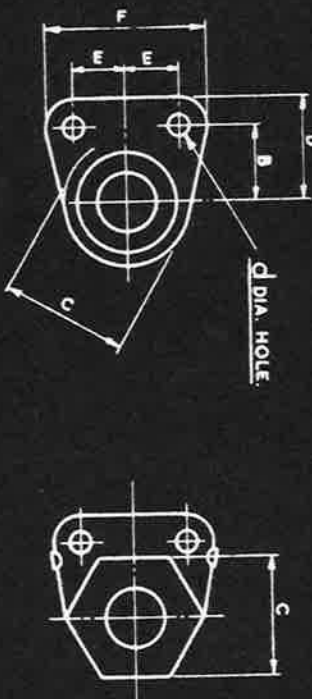


SM 2166

A.G.S. 2018

8	F.45
9	F.101
10	F.145
11	F.175



THIS PART MAY BE MADE AS ONE UNIT, NUT INTEGRAL WITH CAGE OR SUPPLIED AS AN ASSEMBLY WITH CAGE, BASE PLATE AND NUT.

THE APPLICATION OF THIS A.G.S. IS EXPLAINED ON A.G.S. 2000.

B.A. THREADS TO B.S. SPEC. 93.  
B.S.F. THREADS TO B.S. SPEC. 84 FREE FIT.

SIZE	MARK No.	A MAX.	B	C MAX.	d	D MAX.	E	F MAX.	T MAX.
6 B.A.	A	.241"	.2575"	.284"	.065"	.350"	.0975"	.370"	.056"
4 B.A.	B	.284"	.3525"	.380"	.096"	.473"	.1275"	.490"	.065"
2 B.A.	C	.350"	.4725"	.430"	.096"	.475"	.1475"	.540"	.065"
1/8 B.S.F.	E	.402"	.5025"	.580"	.096"	.660"	.2425"	.720"	.072"
5/16 B.S.F.	G	.473"	.5525"	.632"	.128"	.710"	.2875"	.820"	.072"
3/8 B.S.F.	J	.549"	.6475"	.708"	.128"	.710"	.2875"	.820"	.082"
7/16 B.S.F.	L	.629"	.7275"	.818"	.128"	.825"	.3525"	1.050"	.082"
1/2 B.S.F.	N	.721"	.8225"	.928"	.128"	.900"	.4225"	1.190"	.082"

ITEMS MARKED † OBSOLETE SUPERSEDED FOR NEW DESIGN WORK BY UNIFIED THREAD STIFFNUTS IN THE SERIES B.S. A125-201.

EXAMPLE FOR CALLING UP:-  
A 2 B.A. ALUMINUM ALLOY SINGLE ANCHOR NUT-THICK IS DESIGNATED AS A.G.S. 2018/C/3.

IT IS NOT PERMISSIBLE TO CALL UP THE CAGE AND BASE PLATE AND NUT WITH DIFFERENT SUFFIX NUMBERS.

SPEC. CAGE AND BASE.

SUFFIX No.	MATL.	SPEC.	FINISH.
1	MILD STEEL	S510 OR S511	CADMIUM PLATED D.T.D. 904
2	NON-CORRODIBLE STEEL OR MONEL	DT.D. 10B.	
3	ALUMINUM ALLOY	D.T.D. 182	Δ
4	BRASS	B.S. 409	ELECTRO TINNED D.T.D. 924

SPEC. NUT.

SUFFIX No.	MATL.	SPEC.	FINISH.
1	MILD STEEL	S.1 S.112 OR S.113	CADMIUM PLATED D.T.D. 904
2	NON-CORRODIBLE STEEL	S. 80	CADMIUM PLATED D.T.D. 904
3	ALUMINUM ALLOY	OR B.S. L.65	OR B.S. L.65
4	BRASS OR BRONZE	B.S. 251 OR B.S. 369	ELECTRO TINNED D.T.D. 924

Δ ANODISED IN ACCORDANCE WITH SPEC. DT.0910 AND DYED BLUE #9. SOLWAY BLUE S.E.S. 15 A SUITABLE DYE.

DESIGNED BY THE SOCIETY OF BRITISH ANCHOR FASTENINGS LTD., 18, KING STREET, ST. ALBANS, HERTS., ENGLAND.

DESIGNED	DRAWN	TRACED	CHECKED	APPROVED	DATE
F.A.L.	F.A.L.	F.A.L.	F.A.L.	[Signature]	1-60

HT SEE ABOVE

PT STIFFNUTS - SINGLE ANCHOR - THICK.

THIRD ANGLE PROJECTION

A.G.S. 2018