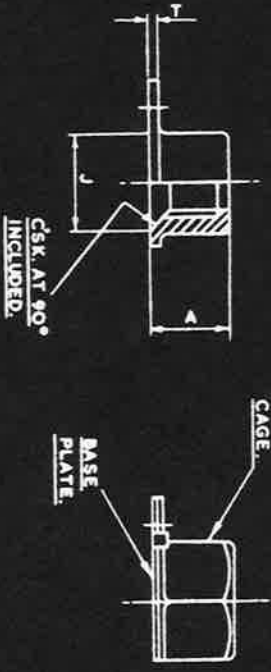
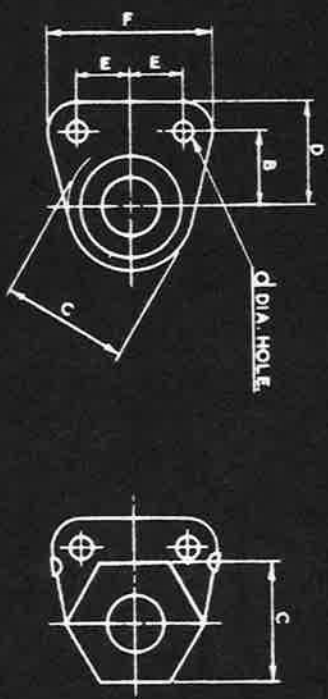


SM 2166

A.G.S. 2020

9	F 45
10	F101
11	F145
12	F189



THIS PART MAY BE MADE AS ONE UNIT, NUT INTEGRAL WITH CAGE OR SUPPLIED AS AN ASSEMBLY WITH CAGE, BASE PLATE AND NUT.

THE APPLICATION OF THIS A.G.S. IS EXPLAINED ON A.G.S. 2000.

B.A. THREADS TO B.S. SPEC. 93.  
B.S.F. THREADS TO B.S. SPEC. 84 FREE FIT.

SIZE	MARK No.	A MAX.	B	C MAX.	d	D MAX.	E	F MAX.	T MAX.	J MAX.
6 B.A.	A	.241"	.2525"	.284"	.065"	.350"	.0975"	.370"	.056"	.193"
4 B.A.	B	.284"	.3525"	.380"	.096"	.473"	.1275"	.490"	.065"	.248"
2 B.A.	C	.350"	.5525"	.430"	.096"	.475"	.1525"	.540"	.065"	.324"
1/8 B.S.F.	E	.402"	.4975"	.580"	.096"	.660"	.2425"	.720"	.072"	.443"
5/16 B.S.F.	G	.473"	.5475"	.632"	.128"	.710"	.2875"	.820"	.072"	.525"
3/8 B.S.F.	J	.549"	.5525"	.708"	.128"	.710"	.3225"	.910"	.082"	.600"
7/16 B.S.F.	L	.629"	.6275"	.818"	.128"	.825"	.3525"	1.050"	.082"	.704"
1/2 B.S.F.	N	.721"	.6975"	.928"	.128"	.900"	.4225"	1.190"	.082"	.818"

ITEMS MARKED † OBSOLETE SUPERSEDED FOR NEW DESIGN WORK BY UNIFIED THREAD STIFFNUTS IN THE SERIES B.S. A125-201.

EXAMPLE FOR CALLING UP:-  
A 2 B.A. ALUMINUM ALLOY SINGLE ANCHOR NUT-C55 IS DESIGNATED AS A.G.S. 2020/C/3.  
IT IS NOT PERMISSIBLE TO CALL UP THE CAGE AND BASE PLATE AND NUT WITH DIFFERENT SUFFIX NUMBERS.

SPEC. CAGE AND BASE.

SUFFIX No.	MATL.	SPEC.	FINISH.
1	MILD STEEL	S510 OR S511	CADMIUM PLATED D.T.D. 904
2	NON-CORRODIBLE STEEL OR MONEL	D.T.D. 10B.	
3	ALUMINUM ALLOY	D.T.D. 1B2	Δ
4	BRASS	B.S. 409	ELECTRO FINISHED D.T.D. 924

SPEC. NUT.

SUFFIX No.	MATL.	SPEC.	FINISH.
1	MILD STEEL	S.1 S.112 OR S.113	CADMIUM PLATED D.T.D. 904
2	NON-CORRODIBLE STEEL	S. 80	CADMIUM PLATED D.T.D. 904
3	ALUMINUM ALLOY	OR B.S. L.65	Δ
4	BRASS OR BRONZE	B.11 OR B.5.349 OR B.S. 751 OR B.S. 369	ELECTRO FINISHED D.T.D. 924

Δ ANODISED IN ACCORDANCE WITH SPEC. D.T.D. 910 AND DYED BLUE 6-9. SOLWAY BLUE. S.E.S. IS A SUITABLE DYE.

DESIGNED BY THE OFFICE OF THE ASSISTANT GENERAL SUPERVISOR, A.G.S. 2020

DESIGNED DRAWN TRACED CHECKED

HT PT SEE ABOVE

STIFFNUTS - SINGLE ANCHOR-COUNTERSUNK.

THIRD ANGLE PROJECTION

A.G.S. 2020