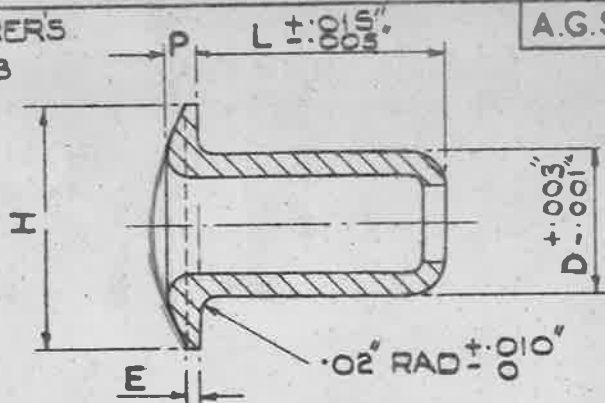


BASED ON MANUFACTURER'S  
DRAWING NO G.T. 30125 B  
SHEETS 1 & 2

A.G.S. 2050 SHEET 1

IMPORTANT NOTE  
FOR PRECAUTIONS RE  
USE - SEE A.P. 970  
LEAFLET 405/2.



THIS RIVET IS A PROPRIETARY ARTICLE MANUFACTURED BY: GEORGE TUCKER EYELET CO. LTD.  
WALSALL ROAD, BIRMINGHAM, AND KNOWN COMMERCIALY BY THE MAKER'S CODE LETTERS  
T.L.P./D. FOR CALLING UP PURPOSES, HOWEVER, THE A.G.S. NUMBER IS TO BE USED,  
FOLLOWED BY THE CODE NUMBER AS GIVEN IN THE TABLE.

LENGTH L INS	MAX. THICKNESS TO BE RIVETED INS.		CODE NUMBERS			
	BREAK HEAD	BREAK STEM.				
.13	.05	-		413		
.19	.09	.07	319			
.19	.09	.07		419		
.19	.08	.05			519	
.21	.11	.09	321			
.24	.14	.12		424.85		
.24	.14	.10			524	
.24	.12	.09				624
.29	.19	.17		429		
.30	.20	.16			530	
.30	.17	.15				630
.35	.25	.23		435		
.36	.23	.20				636
.37	.25	.23			537	
.39	.25	.23				639
.40	.30	.28		440		
.40	.29	.26			540	
.45	.34	.31			545	
.50	.36	.34				650
.65	.51	.49				665
.75	.61	.59				675
SHANK DIA.	'D' INS.		7/64	1/8	5/32	3/16
DIA. OF HEAD	'H' INS	.192 ± .007	.236 ± .007	.263 ± .007	.320 ± .010	
DEPTH OF HEAD	'P' INS	.020 ± .003	.025 ± .003	.028 ± .003	.040 ± .010	
EDGE	'E' INS	.008 ± .003	.010 ± .005	.010 ± .005	.015 ± .010	
DRILL SIZE	INS.	.1130	.1285	.1610	.1910	

NOTE:- THE FIRST FIGURE OF THE CODE NUMBER REPRESENTS THE DIA e.g. 3=7/64, 4=1/8,  
5=5/32, & 6=3/16". THE LENGTH IN 1/100" IS INDICATED BY THE LAST TWO FIGURES.

METHOD OF CALLING UP:- THE COMPLETE PART NUMBER FOR THE RIVET IS GIVEN  
BY QUOTING THE A.G.S. NUMBER, WHICH DEFINES THE TYPE OF RIVET AND  
THE MATERIAL, FOLLOWED BY THE CODE NUMBER, TAKEN FROM THE TABLE  
ABOVE, WHICH DEFINES THE SHANK DIA. AND LENGTH OF THE RIVET.

EXAMPLE:- A.G.S. 2050/424 IS A TUCKER 'POP' RIVET - MONEL WITH DOMED HEAD  
- 1/8" SHANK DIA. X .24" LONG. ADD B.S. OR B.H. TO THIS PART NUMBER TO  
INDICATE BREAK STEM, OR BREAK HEAD, MANDREL.

PROTECTIVE TREATMENT:- CADMIUM PLATE TO SPEC: D.T.D. 904. (LATEST ISSUE).  
COLOUR IDENTIFICATION:- CADMIUM.

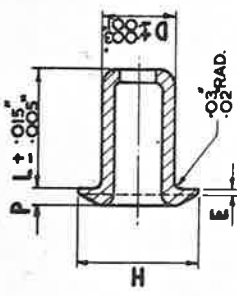
S.M. 598

TITLE RIVETS, TUCKER, MONEL, D.T.D. I.O.B, 'POP' DOMED HEAD.	ISSUE	2					
	ALT. NO.	MOD/AGS	519				
MINISTRY OF SUPPLY APPLICATIONS FOR A.G.S. SHEETS TO:- A.T.P.4. BLOCK 'E' CHESSINGTON, SURREY. GENERAL ENQUIRIES TO:- A.D./S.A.E. ST GILES COURT, 1-13 ST. GILES HIGH STREET, LONDON W.C.2.	R.A.E. APPROVAL		NUMBER OF SHEETS	A.G.S. No. 2050 SHEET 1			
	SIGNATURE	DATE					
	A.D.S.A.E. APPROVAL		1				
	SIGNATURE	DATE					
ORIGINAL APPROVAL DATE: 13-7-50							

STD R-1.  
DATE 13-10-73

**A.G.S. 2050**

LENGT		MAX THICKNESS TO BE RIVETED INS.		CODE NUMBERS			
IN.	'L'	BREAK HEAD	BREAK STEM				
.13	.05			413			
.19	.09	.07		319			
.19	.09	.07		419			
.19	.08	.05			519		
.21	.11	.09		321			
.24	.14	.12			424		
.24	.14	.10				524	
.24	.12	.09				624	
.29	.19	.17			429		
.30	.20	.16				530	
.30	.17	.15				630	
.35	.25	.23			435		
.36	.23	.20				636	
.37	.25	.23			537		
.39	.25	.23				639	
.40	.30	.28			440		
.40	.29	.26				540	
.45	.34	.31				545	
.50	.36	.34				650	850
.50	-	.30				665	870
.65	.51	.49					
.70	-	.50					
.75	.61	.59				675	
SHANK DIA. 'D' INS.				7/64	1/8	5/32	3/16
DIA. OF HEAD 'H' INS.				.199/.185	.243/.229	.270/.256	.330/.310
DEPTH OF HEAD 'P' INS.				.023/.017	.028/.022	.031/.025	.050/.030
EDGE 'E' INS.				.011/.005	.015/.005	.015/.005	.025/.005
DRILL INS.				.1150	.1285	.1610	.1910
						.2570	



FOR PRECAUTIONS RE USE - SEE A.P. 970 LEAFLET 405 / 2.  
NOTE:-

THE FIRST FIGURE OF THE CODE NUMBER REPRESENTS THE DIA. e.g. 3 = 3/64", 4 = 1/8", 5 = 5/32" & 6 = 3/16". THE LENGTH IN 1/100" IS INDICATED BY THE LAST TWO FIGURES.

METHOD OF CALLING UP:-

THE COMPLETE PART NUMBER FOR THE RIVET IS GIVEN BY QUOTING THE A.G.S. NUMBER, WHICH DEFINES THE TYPE OF RIVET AND THE MATERIAL, FOLLOWED BY THE CODE NUMBER, TAKEN FROM THE TABLE, WHICH DEFINES THE SHANK DIA. AND LENGTH OF THE RIVET.

EXAMPLE.

AGS. 2050/424. IS A TUCKER 'POP' RIVET-MONEL WITH DOMED HEAD 1/8" SHANK DIA. x 24' LONG. ADD B.S. OR B.H. TO THIS PART NUMBER TO INDICATE BREAK STEM, OR BREAK HEAD, MANDREL. PROTECTIVE TREATMENT:-

CADMIUM PLATE TO SPECN. D.T.D. 904  
COLOUR IDENTIFICATION.  
PLAIN.

ISSUED BY THE SOCIETY OF BRITISH AIRCRAFT CONSTRUCTORS LTD., 29, KING STREET, ST. JAMEE'S, LONDON S.W.1.

DESIGNED TUCKER, F.A.C. DRAWN TUCKER, F.A.C. TRACED TUCKER, F.A.C. CHECKED TUCKER, F.A.C. APPROVED FOR TUCKER, F.A.C. DATE 18.5.58

HT

PT SEE ABOVE SCALE LIMITS NOT SHOWN

RIVETS, TUCKER, MONEL, 'POP' DOMED HEAD.

A.G.S. 2050

D.T.D. TO B.  
MATERIAL-REMARKS