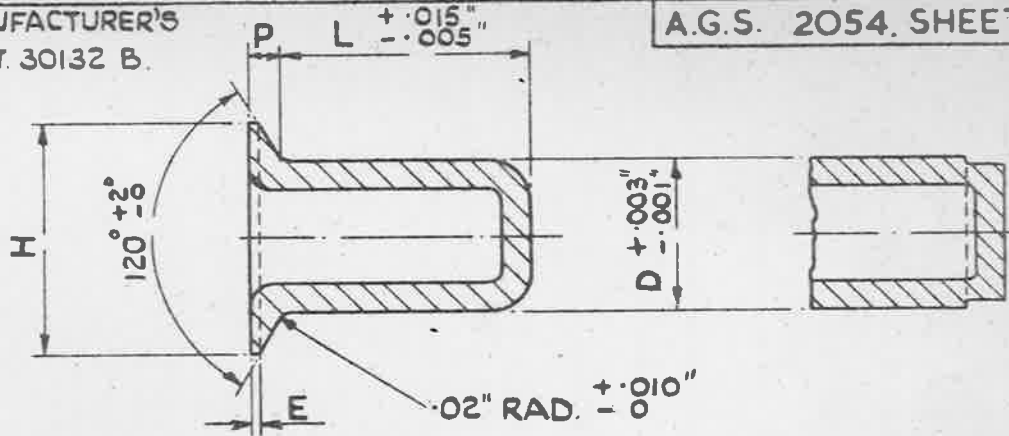


BASED ON MANUFACTURER'S
DRAWING N° G.T. 30132 B.
SHEETS 1 & 2.

A.G.S. 2054. SHEET 1.



METAL SPECIFICATION B.S. L.58 (COMPOSITION ONLY) ALTERNATIVE END FORM METAL SPECIFICATION BS L58

THIS RIVET IS A PROPRIETARY ARTICLE MANUFACTURED BY:- GEORGE TUCKER EYELET CO. LTD. WALSALL ROAD, BIRMINGHAM, AND KNOWN COMMERCIALY BY THE MAKER'S CODE LETTERS T.A.C/K. FOR CALLING UP PURPOSES, HOWEVER, THE A.G.S. NUMBER IS TO BE USED, FOLLOWED BY THE CODE NUMBER AS GIVEN IN THE TABLE.

LENGTH L INS.	MAX. * THICKNESS TO BE RIVETED. INS.	CODE NUMBERS.		
.15	.08	415		
.19	.11		519	
.21	.12	421		
.24	.15	424		
.24	.16		524	
.26	.15			626
.30	.22	430		
.30	.22		530	
.30	.19			630
.36	.25			636
.38	.28		538	
.41	.28			641
.50	.39			650
.66	.54			666
SHANK DIA. 'D' INS.		1/8	5/32	.2
DIA. OF HEAD 'H' INS.		.236 ± .007	.263 ± .007	.306 ± .010
DEPTH OF HEAD 'P' INS.		.036 ± .003	.039 ± .003	.039 ± .004
EDGE 'E' INS.		.008 ± .005	.008 ± .005	.009 ± .006
DRILL SIZE	INS.	.1285	.1610	.2040.

NOTE:- THE FIRST FIGURE OF THE CODE NUMBER REPRESENTS THE DIA. eg. 4 = 1/8, 5 = 5/32, & 6 = .2". THE LENGTH IN 1/100" IS INDICATED BY THE LAST TWO FIGURES

METHOD OF CALLING UP:- THE COMPLETE PART NUMBER FOR THE RIVET IS GIVEN BY QUOTING THE A.G.S. NUMBER, WHICH DEFINES THE TYPE OF RIVET AND THE MATERIAL, FOLLOWED BY THE CODE NUMBER, TAKEN FROM THE TABLE ABOVE, WHICH DEFINES THE SHANK DIA. AND LENGTH OF THE RIVET.

EXAMPLE:- A.G.S. 2054/424 IS A TUCKER CUP RIVET - ALUMN ALLOY WITH C'SK. HEAD - 1/8 SHANK DIA. X .24" LONG.

IDENTIFICATION TREATMENT:- TREATED & DYED IN ACCORDANCE WITH SPEC. DTD. 913 COLOUR IDENTIFICATION :- GREEN (LATEST ISSUE)

* THIS APPLIES WHERE THE PLATES HAVE BEEN C'SK. BY MACHINING AND NOT DIMPLING.

TITLE:- RIVETS, TUCKER, ALUMN ALLOY B.S. L58 (FORMERLY DTD. 303) CUP. C'SK. HEAD.	ISSUE	2 ⁵⁹				
	ALT. NO.	MOD. A.G.S. 913				
MINISTRY OF SUPPLY APPLICATIONS FOR A.G.S. SHEETS TO:- A.T.P.4. BLOCK 'E', CHESSINGTON, SURREY. GENERAL ENQUIRIES TO:- A.D./S.A.E. ST. GILES COURT, 1-13 ST. GILES HIGH STREET, LONDON W.C.2.	R.A.E. APPROVAL		NUMBER OF SHEETS 1	A.G.S. No. 2054. SHEET 1		
	SIGNATURE	DATE				
	<i>C.S. R. Lewis</i>	28.7.57				
A.D.S.A.E. APPROVAL						
	SIGNATURE	DATE				
	<i>G.I. Yemler</i>	20/8/53				

ORIGINAL APPROVAL DATE 13 7. 50