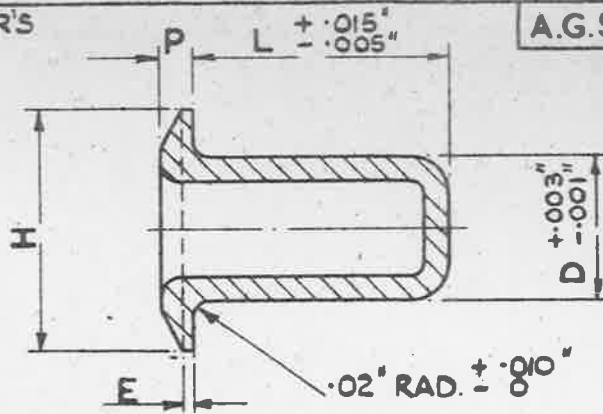


BASED ON MANUFACTURER'S
DRAWING N^o G.T. 30129 B.
SHEETS 1 & 2

A.G.S. 2055 SHEET 1



THIS RIVET IS A PROPRIETARY ARTICLE MANUFACTURED BY:- GEORGE TUCKER EYELET CO. LTD. WALSALL ROAD, BIRMINGHAM, AND KNOWN COMMERCIALY BY THE MAKER'S CODE LETTERS T.L.C/D. FOR CALLING UP PURPOSES, HOWEVER, THE A.G.S. NUMBER IS TO BE USED, FOLLOWED BY THE CODE NUMBER AS GIVEN IN THE TABLE.

LENGTH L INS.	MAX. THICKNESS TO BE RIVETED INS.	CODE NUMBERS.			
.14	.05		414		
.20	.09	320			
.20	.09		420		
.20	.08			520	
.22	.11	322			
.25	.14		425		
.25	.14			525	
.25	.12				625
.30	.19		430		
.31	.20			531	
.31	.17				631
.36	.25		436		
.37	.23				637
.38	.25			538	
.40	.25				640
.41	.30		441		
.41	.29			541	
.46	.34			546	
.51	.36				651
.66	.51				666
.76	.61				676
SHANK DIA. 'D' INS.		$\frac{7}{64}$	$\frac{1}{8}$	$\frac{5}{32}$	$\frac{3}{16}$
DIA OF HEAD 'H' INS.		$.192 \pm .007$	$.236 \pm .007$	$.263 \pm .007$	$.320 \pm .010$
DEPTH OF HEAD 'P' INS.		$.020 \pm .003$	$.025 \pm .003$	$.028 \pm .003$	$.040 \pm .010$
EDGE 'E' INS.		$.008 \pm .003$	$.010 \pm .005$	$.010 \pm .005$	$.015 \pm .010$
DRILL SIZE	INS.	.1130	.1285	.1610	.1910

NOTE:- THE FIRST FIGURE OF THE CODE NUMBER REPRESENTS THE DIA. e.g. 3 = $\frac{7}{64}$, 4 = $\frac{1}{8}$, 5 = $\frac{5}{32}$, & 6 = $\frac{3}{16}$. THE LENGTH IN $\frac{1}{100}$ " IS INDICATED BY THE LAST TWO FIGURES.

METHOD OF CALLING UP:- THE COMPLETE PART NUMBER FOR THE RIVET IS GIVEN BY QUOTING THE A.G.S. NUMBER, WHICH DEFINES THE TYPE OF RIVET AND THE MATERIAL, FOLLOWED BY THE CODE NUMBER, TAKEN FROM THE TABLE ABOVE, WHICH DEFINES THE SHANK DIA. AND LENGTH OF THE RIVET.

EXAMPLE:- A.G.S. 2055/425 IS A TUCKER CUP RIVET - MONEL WITH DOMED HEAD - $\frac{1}{8}$ " SHANK DIA. X .25" LONG.

PROTECTIVE TREATMENT:- CADMIUM PLATED TO SPEC: D.T.D. 904. (LATEST ISSUE)

COLOUR IDENTIFICATION:- CADMIUM. S.M. 699

TITLE :- RIVETS, TUCKER, MONEL D.T.D. IO.B, CUP, DOMED HEAD.	ISSUE	2					
	ALT.N ^o	MOD/AGS	919				
MINISTRY OF SUPPLY APPLICATIONS FOR A.G.S. SHEETS TO:- A.T.P.4, BLOCK 'E', CHESSINGTON, SURREY. GENERAL ENQUIRIES TO:- A.D.S.A.E. ST. GILES COURT, 1-13 ST. GILES HIGH STREET, LONDON W.C.2.	R.A.E. APPROVAL		NUMBER OF SHEETS		A.G.S. N ^o . 2055. SHEET 1		
	SIGNATURE	DATE	1				
	<i>C.B. Fewell</i>	28.7.53					
	A.D.S.A.E. APPROVAL	DATE					
	SIGNATURE	DATE					
	<i>G. J. Hamble</i>	20/8/53					

ORIGINAL APPROVAL DATE. 13.7.50.