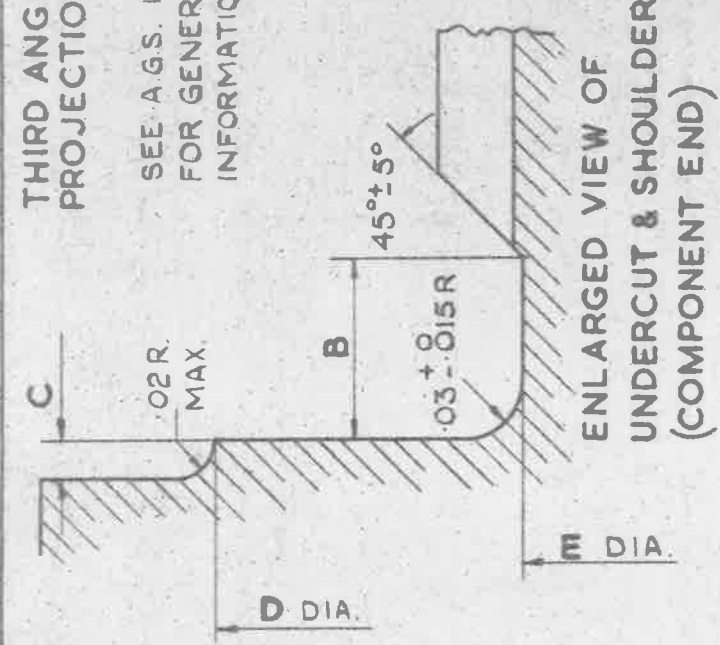


THIRD ANGLE PROJECTION

SEE A.G.S. 100 FOR GENERAL INFORMATION.

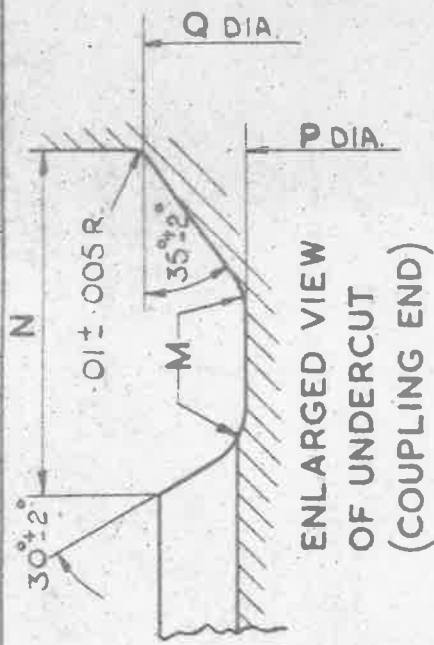


ENLARGED VIEW OF UNDERCUT & SHOULDER (COMPONENT END)

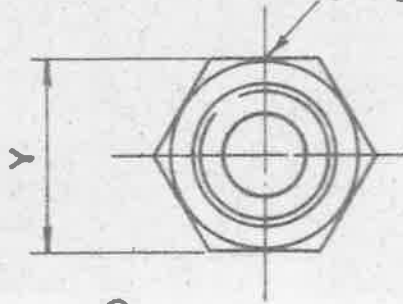
A.G.S. 3016 - \* TO BE LEGIBLY AND DURABLY MARKED IN POSITION SHOWN (\* MARK.)

ALL SHARP EDGES AND BURRS TO BE REMOVED

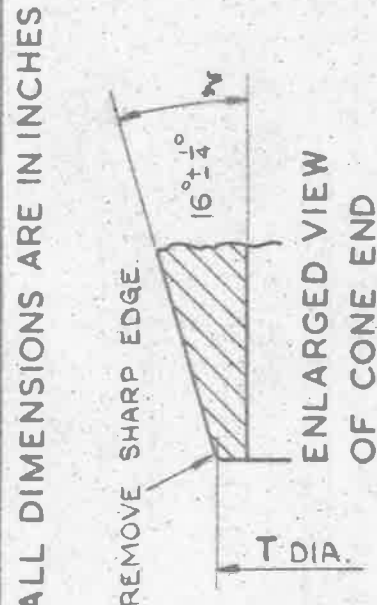
MACHINE ALL OVER.



ENLARGED VIEW OF UNDERCUT (COUPLING END)



XX MAJOR DIA.  
VV EFFECTIVE DIA.  
UU MINOR DIA.  
YY THREADS PER INCH.

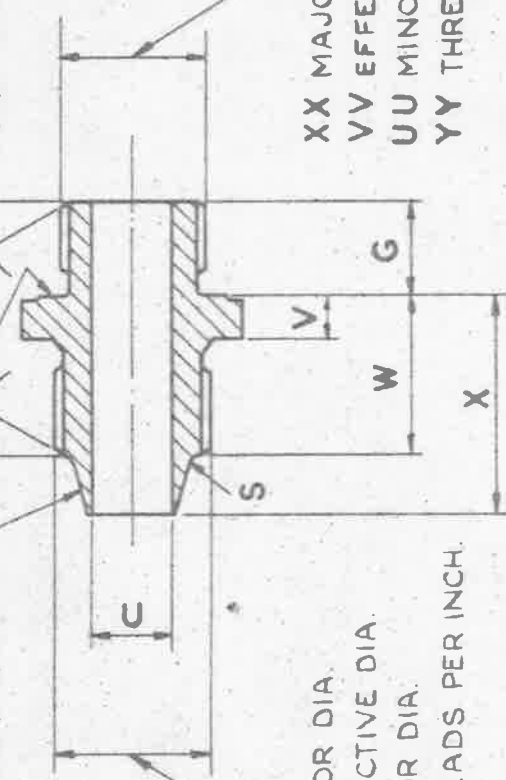


ENLARGED VIEW OF CONE END

REMOVE SHARP EDGE.

SMOOTH FINISH FREE FROM VISIBLE TOOL MARKS.

COUPLING END



K MAJOR DIA.  
J EFFECTIVE DIA.  
H MINOR DIA.  
L THREADS PER INCH.

MATERIAL:- NON-CORR. STEEL TO SPEC. D.T.D. 525 (LATEST ISSUE).

NOTES:- 1. B.S.P. THREADS TO BE IN ACCORDANCE WITH B.S. SPEC. N° 84 (LATEST ISSUE) MEDIUM FIT, TRUNCATED.  
2. U.N. THREADS TO BE IN ACCORDANCE WITH B.S. SPEC. N° 1580 (LATEST ISSUE) CLASS 2 A FIT.

THE ECCENTRICITY BETWEEN CONE AND BORE IS NOT TO EXCEED .006 FULL INDICATOR MOVEMENT.

TITLE :- PIPE COUPLINGS (STEEL) - CONE UNION ADAPTOR / UNIFIED ATTACHMENT END, 3/16 TO 1/2 - FOR USE WITH "O" RING GASKETS, IN AMERICAN (AND 10050) OR EQUIVALENT A.G.S. 3018 TAPPED BOSSES.

ISSUE	1
ALT. N°	Mod/Ags. 1018

MINISTRY OF SUPPLY  
APPLICATIONS FOR A.G.S. SHEETS TO:-  
A.T. P. 4, BLOCK 'E', CHESSINGTON, SURREY.  
GENERAL ENQUIRIES TO:-  
A.D./S.A.E. ST GILES COURT, 1-13  
ST GILES HIGH STREET, LONDON W.C.2.

R.A.E. APPROVAL	
SIGNATURE	DATE
<i>[Signature]</i>	25.9.56
A.D./S.A.E. APPROVAL	
SIGNATURE	DATE
<i>[Signature]</i>	1.10.56

NUMBER OF SHEETS  
2

A.G.S. N°  
3016  
SHEET 1

ALL DIMENSIONS ARE IN INCHES

A.G.S. 3016 SHEET 2

COUPLING END - B.S.P.

M A R K	OUT DIA. OF PIPE	Y		X	W	V	U	T	S	Q	P	N	M	L T P	K		J		H				
		MAX.	MIN												MAJOR DIAMETER MAX	MIN	EFFECTIVE DIAMETER MAX	MIN	MINOR DIAMETER MAX	MIN			
A	3/16	.6250	.6170	.85	.63	.20	1/8	.160	.03	.39	.330	.10	.015	28	.3777	.0048	.3729	.3601	.0042	.3559	.3372	.0080	.3292
B	1/4	.6875	.6795	.94	.66	.20	3/16	.224	.04	.52	.440	.14	.025	19	.5102	.0057	.5045	.4843	.0049	.4794	.4506	.0095	.4411
BB	5/16	.7500	.7420	1.00	.68	.20	15/64	.267	.04	.61	.525	.14	.025	19	.5922	.0057	.5865	.5663	.0048	.5615	.5326	.0093	.5233
C	3/8	.8125	.8045	1.07	.75	.22	19/64	.333	.04	.66	.580	.14	.025	19	.6482	.0057	.6425	.6223	.0050	.6173	.5886	.0096	.5790
CC	7/16	.8750	.8670	1.11	.79	.22	23/64	.392	.04	.75	.650	.18	.035	14	.7394	.0067	.7327	.7043	.0060	.6983	.6586	.0118	.6468
D	1/2	1.0000	.9920	1.14	.82	.22	27/64	.453	.06	.83	.723	.18	.035	14	.8144	.0067	.8077	.7793	.0056	.7737	.7336	.0109	.7227

COMPONENT END - UNIFIED

M A R K	OUT DIA. OF PIPE	G	E	D	C	B	TH'D SIZE	YY T P	X X		V V		U U		
									MAJOR DIAMETER MAX.	TOL	EFFECTIVE DIAMETER MAX	TOL	MINOR DIAMETER MAX	TOL	
A	3/16	.35	.312	.610	.02	.063	3/8 U.N.F.	24	.3739	.0072	.3667	.0038	.3430	.0068	.3160
B	1/4	.40	.364	.670	.02	.075	7/16 U.N.F.	20	.4362	.0081	.4281	.0042	.3995	.0078	.3671
BB	5/16	.40	.426	.730	.02	.075	1/2 U.N.F.	20	.4987	.0081	.4906	.0043	.4619	.0079	.4295
C	3/8	.45	.481	.790	.02	.083	9/16 U.N.F.	18	.5611	.0087	.5524	.0045	.5205	.0085	.4844
CC	7/16	.45		.860	.02		5/8 U.N.F.	18	.6236	.0087	.6149	.0047	.5828	.0087	.5467
D	1/2	.50	.660	.980	.02	.094	3/4 U.N.F.	16	.7485	.0094	.7391	.0050	.7029	.0095	.6623

TITLE: PIPE COUPLINGS (STEEL)-CONE UNION ADAPTOR UNIFIED ATTACHMENT END, 3/16 TO 1/2 - FOR USE WITH "O" RING GASKETS, IN AMERICAN (AND 10050) OR EQUIVALENT A.G.S. 3018 TAPPED BOSSES.

ISSUE 1  
Mod AGS 1018  
ALT. No.

MINISTRY OF SUPPLY  
APPLICATIONS FOR A.G.S. SHEETS TO:-  
A.T.P.4 BLOCK 'E', CHESSINGTON, SURREY.  
GENERAL ENQUIRIES TO:-  
AD/SAE, ST GILES COURT, 1-13  
ST GILES, HIGH STREET, LONDON WC2

S.A.E. APPROVAL  
SIGNATURE: [Signature] DATE: 25.1.56  
A.D.S.A.E. APPROVAL  
SIGNATURE: [Signature] DATE: 1.10.56

NUMBER OF SHEETS: 2  
A.G.S. No 3016 SHEET 2

A.G.S. 3016 SHEET 1

REV. DATE

1 1/1

2 1/1

3 6/56

4 8/19

5 1/13 SM 2024

REMOVE SHARP  
EDGE



ENLARGED VIEW OF CONE END.

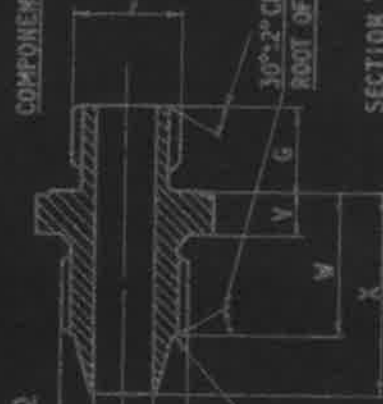


PART HERE

ATTACHED WORKING DRAWING  
2198.000 WORKING DRAWING  
UP TO 1/2" 2.0000 LARGING.

K MAJOR DIA.  
J EFFECTIVE DIA.  
H MINOR DIA.  
L THREADS PER INCH

COUPLING END



SECTION X-X'



ENLARGED VIEW OF UNDERCUT  
AND SHOULDER  
(COMPONENT END)



ENLARGED VIEW OF UNDERCUT  
(COUPLING END)

MACHINE ALL OVER.  
SEE A.G.S. 100 FOR GENERAL INFORMATION.  
U.S.F. THREADS TO BE IN ACCORDANCE WITH B.3 SPEC No. 2779  
MEDIUM FLY TRUNCATED.  
U.M. THREADS TO BE IN ACCORDANCE WITH B.5 SPEC No. 1580 CLASS 2 A FIT  
THE EXACTITUDE IN EACH CASE IS NOT TO EXCEED 0.002  
FULL INDICATOR MOVEMENT.

REV.	DATE	DESCRIPTION	D.T.D.	SHEET NO.	TOTAL SHEETS
1	1/1		D. T. D. 525	1	1

REV.	DATE	DESCRIPTION	D.T.D.	SHEET NO.	TOTAL SHEETS
1	1/1		D. T. D. 525	1	1

REV.	DATE	DESCRIPTION	D.T.D.	SHEET NO.	TOTAL SHEETS
1	1/1		D. T. D. 525	1	1

PIPE COUPLINGS (STEEL) CONE UNION ADAPTOR  
UNITED ATTACHMENT END 3/4" TO 1/2" FOR USE  
WITH 10-1199 GASKETS IN AMERICAN (ASA 1000)  
OR EQUIVALENT A.B.S. 500 TAPPED ROSS 429  
A.G.S. 3016 SHEET 1.