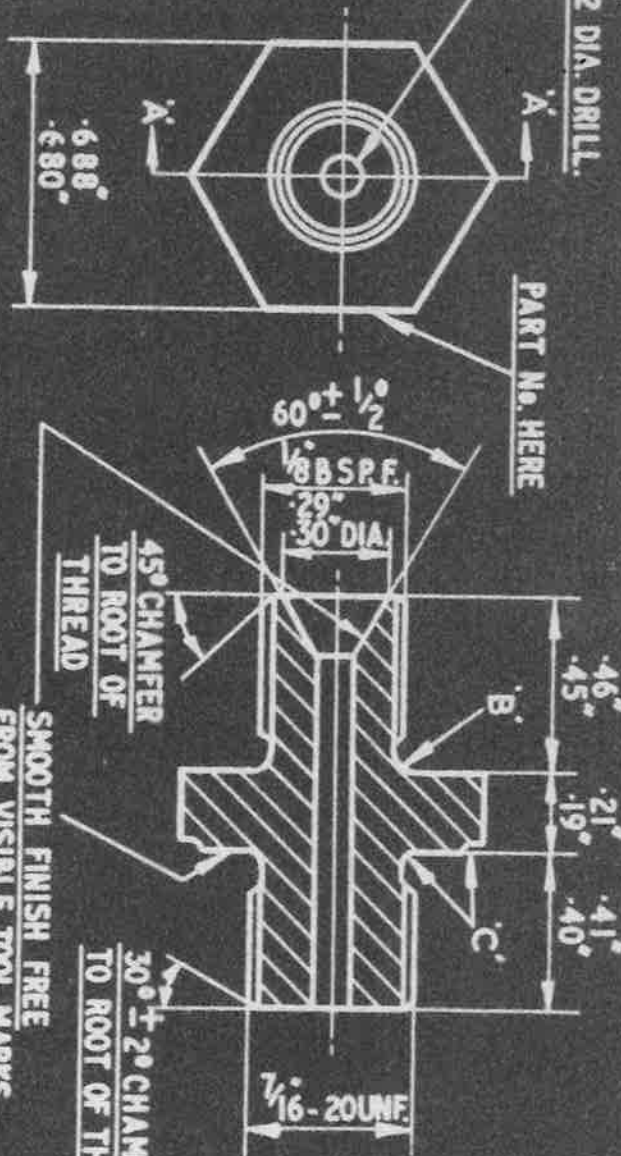


HOLE $\frac{3}{32}$ " DIA. DRILL.

PART No. HERE



ACTUAL SIZE

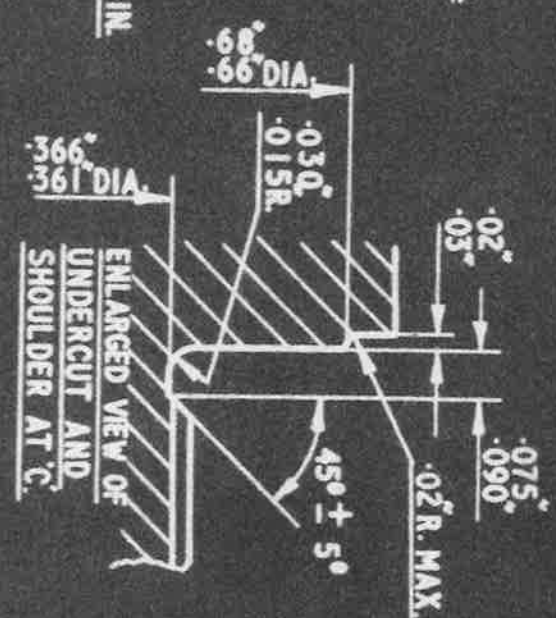
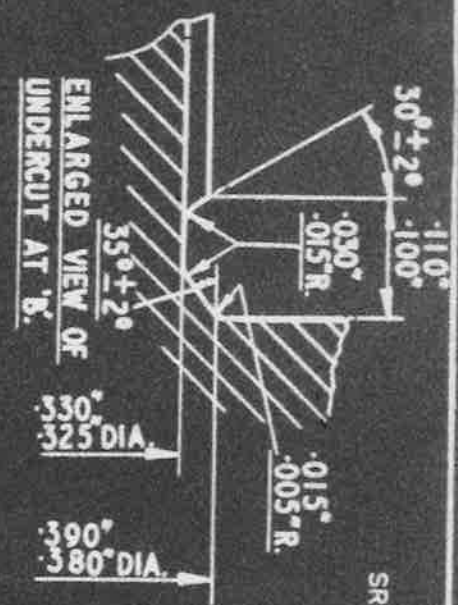


MACHINE ALL OVER.
 SEE A.G.S. 100 FOR GENERAL INFORMATION.
 B.S.P.F. THREADS TO BE IN ACCORDANCE WITH B.S. SPEC. 2779. (MEDIUM FIT TRUNCATED)
 UN. THREADS TO BE IN ACCORDANCE WITH B.S. SPEC. 1580. CLASS 2A FIT.

APPROVED WORKING PRESSURE 3000LBS/SQ.IN.

SECTION 'A-A'

SMOOTH FINISH FREE FROM VISIBLE TOOL MARKS.



ENLARGED VIEW OF UNDERCUT AND SHOULDER AT 'C'

ENLARGED VIEW OF UNDERCUT AT 'B'

USED ON	ALUMH. ALLOY.		REF.	DRAWING OR PART No.	DESCRIPTION	LIMITS NOT SHOWN	AT DRAWING HAND UNIT QTY	L. 64 OR L. 85.	ISSUE	ALT. No.
---------	---------------	--	------	---------------------	-------------	------------------	--------------------------	-----------------	-------	----------

DESIGNED	DRAWN	TRACED	CHECKED	APPROVED FOR	DATE	HT	PT	RS. 116	SCALE	2:1	LIMITS NOT SHOWN	THIRD ANGLE PROJECTION.
F.A.L.	F.A.L.	F.A.L.	F.A.L.	<i>M. J. Jones</i>	20-11-64							

ISSUED BY THE SOCIETY OF BRITISH AEROSPACE COMPANIES LTD.,
 29, KING STREET, ST. JAMES'S, LONDON, S.W.1.
 CONNECTOR $\frac{1}{8}$ " B.S. PIPE WITH FEMALE CONE.
 A.G.S. 3500.