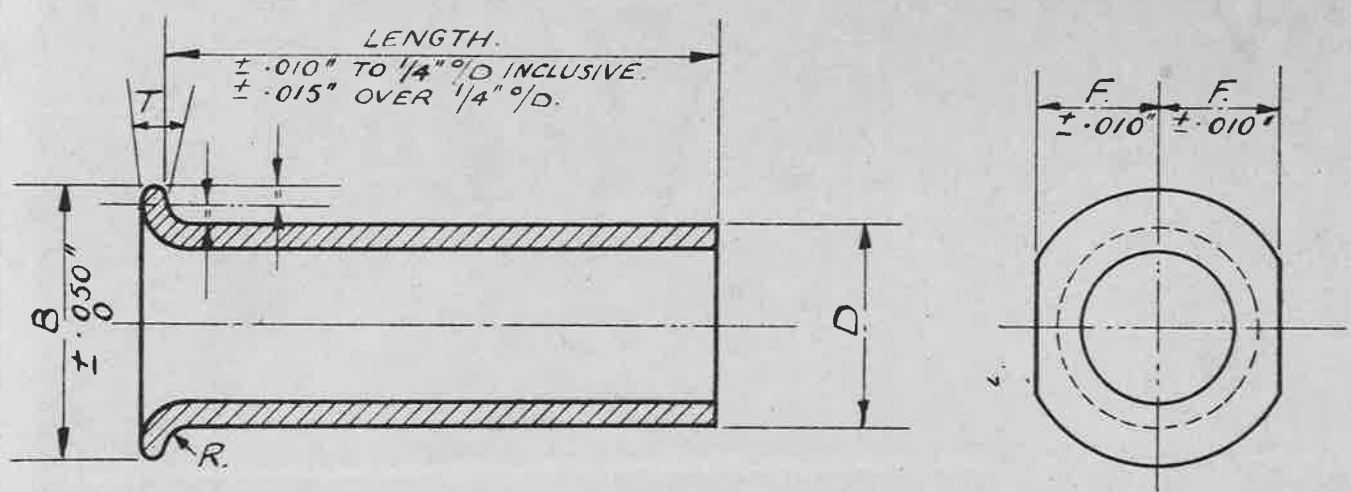


20-8-37
673362/37



SUPERSEDED BY A.G.S. 501 FOR ALL FUTURE DESIGNS.

DIA. OF TUBE D	GAUGE S.W.G.	B +0.050 -0	R +20%	F ±0.010	T	LENGTHS.																		
						.5"	.75"	1.0"	1.25"	1.5"	2.0"	2.5"	3.0"	3.5"	4.0"	4.5"	5.0"	5.5"						
						PART NUMBERS.																		
1/8"	22	.180"	.02"	.082"	.019"	1	2	3	4	5	6	7												
3/16"	20	.280"	.03"	.124"	.025"	14	15	16	17	18	19	20	21											
	17	.300"	.04"	.124"	.038"	14A	15A	16A	17A	18A	19A	20A	21A											
1/4"	17	.370"	.04"	.165"	.038"	27	28	29	30	31	32	33	34											
5/16"	17	.450"	.04"	.196"	.038"		41	42	43	44	45	46	47	48										
3/8"	17	.530"	.04"	.227"	.038"		54	55	56	57	58	59	60	61	62									
	17	.680"	.04"	.290"	.038"			68	69	70	71	72	73	74	75	76	77							
1/2"	14	.730"	.06"	.310"	.058"			81	82	83	84	85	86	87	88	89	90							
	17	.840"	.04"	.353"	.038"				95	96	97	98	99	100	101	102	103	104						
5/8"	14	.880"	.06"	.373"	.058"				108	109	110	111	112	113	114	115	116	117						

NOTE:-
INTERMEDIATE LENGTHS TO BE FORMED BY CUTTING
THE RIVET FROM THE NEXT LONGER SIZE.

SPECIFICATION:-
THE MATERIAL TO BE MILD STEEL TUBE TO B.S.
SPECIFICATION T.26 (LATEST ISSUE.)
TO BE CADMIUM COATED BY AN APPROVED METHOD.

ISSUED BY DRAWING OFFICE DIRECTOR OF TECHNICAL DEVELOPMENT AIR MINISTRY.	TITLE:- TUBULAR RIVETS. STEEL					DRAWN 14 C.T. REYNOLDS 37	RE-TRACED. G.N.A. / 24- 1-39
	ISSUE N°	4 J.M.	5			CHECKED: T. HOAR.	APPROVED: G.W. 21-7-37
	ALTERATION N°	Mod. N° 163345	Mod. N° 165367			RE. CH. R.B. BASTABLE	