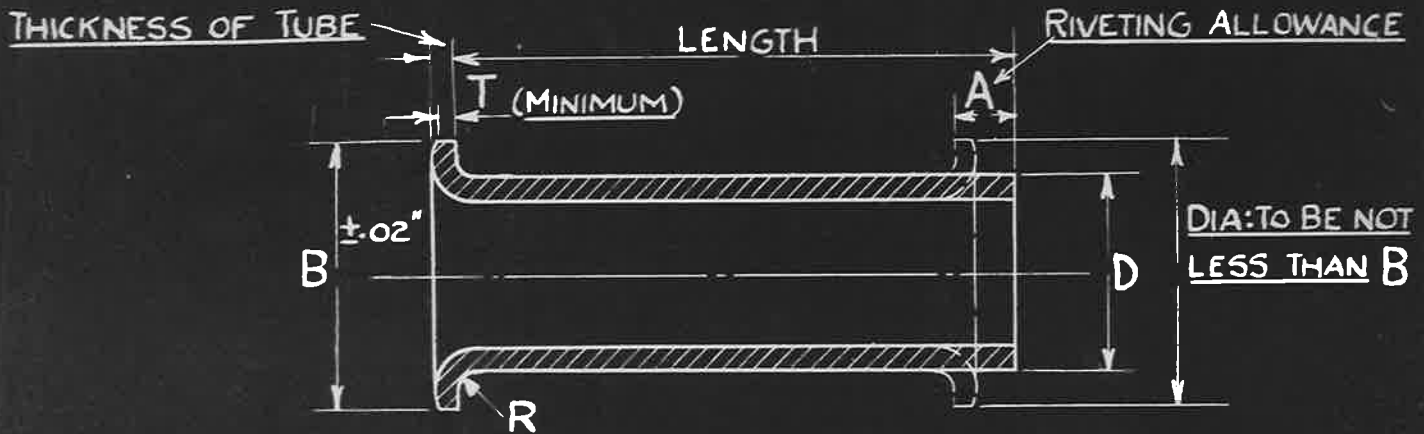


VERN



SUPERSEDED BY A.G.S. 501 FOR ALL FUTURE DESIGNS.

DIA OF TUBE D	GAUGE SW.G.	DIA: B	RADIUS R	T	RIVETING ALLOWANCE A	LENGTH												
						3"	4"	5"	.625"	.75"	.875"	1.0"	1.25"	1.5"	1.75"	2.0"	2.5"	3.0"
						PART NUMBERS.												
3/32"	22	.16"	.02"	.021"	.09" -10"	1A		3A	5A	7A								
1/8"	22	.20"	.02"	.021"	.09" -10"		1	2	3	4	5		6	7				
5/32"	22	.23"	.02"	.021"	.09" -10"			4C	5C									
3/16"	20	.30"	.03"	.027"	.11" -12"		14	15	16	17	18		19	20	21			
1/4"	17	.39"	.04"	.042"	.14" -15"		27	28	29	30	31		32	33	34			
5/16"	17	.47"	.04"	.042"	.15" -17"			41	42	43	44		45	46	47	48		

DIA: OF TUBE D	GAUGE SW.G.	DIA: B	RADIUS R	T	RIVETING ALLOWANCE A	LENGTH													
						5"	.75"	1.0"	1.25"	1.5"	1.75"	2.0"	2.5"	3.0"	3.5"	4.0"	4.5"	5.0"	5.5"
						PART NUMBERS													
3/8"	17	.55"	.04"	.042"	.16" -18"		54	55	56	57		58	59	60	61	62			
1/2"	17	.70"	.04"	.042"	.16" -19"			68	69	70		71	72	73	74	75	76	77	
	14	.75"	.06"	.06"	.22" -25"			81	82	83		84	85	86	87	88	89	90	
5/8"	17	.86"	.04"	.042"	.17" -20"				95	96		97	98	99	100	101	102	103	104
	14	.90"	.06"	.06"	.23" -26"				108	109		110	111	112	113	114	115	116	117

INTERMEDIATE LENGTHS TO BE FORMED BY CUTTING THE RIVET FROM THE NEXT LONGER SIZE.

SPECIFICATION:-

THE MATERIAL TO BE STAINLESS STEEL TUBE TO D.T.D. SPECIFICATION 97 (LATEST ISSUE.)

ISSUED BY DRAWING OFFICE DIRECTORATE OF TECHNICAL DEVELOPMENT AIR MINISTRY	TITLE:- TUBULAR RIVETS (STAINLESS STEEL)						RETRACED FOR A.P.C. E.T. 5-3-41	DRAWN J.K. Brasher	TRACED P.W. 25-11-36
	ISSUE No.	+	2	3			CHECKED Johnson	APPROVED [Signature] 27-11-36	
	ALTERATION	A.G.S. 210	AS A.G.S. 121	MOD. NO. ACS/307					

30-7-30
F.S. WIGLEY