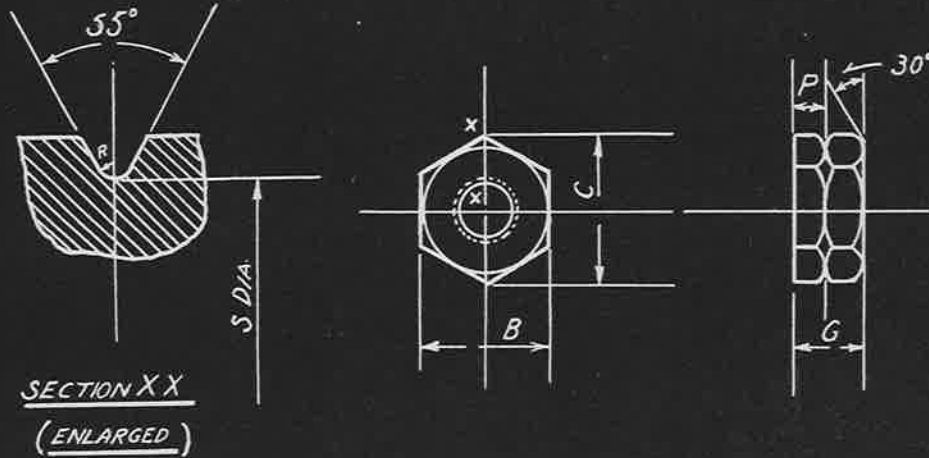


25-9-30
F.S. WIGLEY



MARK	THREAD	B		G		APPROX MAX C	P	R	S
		MAX	MIN	MAX	MIN				
D	6.B.A.	.193"	.190"	.110"	.100"	.223"	.045"	.01"	.196"
C	4.B.A.	.248"	.245"	.142"	.132"	.286"	.06"	.01"	.251"
B	2.B.A.	.324"	.321"	.185"	.178"	.374"	.08"	.01"	.328"

SCREW THREADS:- BRITISH ASSOCIATION (B.A.) TO B.S. SPEC. No 93

THE SCREW THREADS ARE TO BE IN ACCORDANCE WITH THE B.A. SCREW THREADS AS GIVEN IN THE BRITISH ENGINEERING STANDARDS ASSOCIATIONS REPORT No 93 1919 SPECIFICATION:- THE MATERIAL TO BE TO B.S. SPECIFICATION S 80 (LATEST ISSUE) THE LETTERS "SS." ARE TO BE STAMPED ON ANY ONE SIDE OF HEXAGON OF THESE PARTS. THE PARTS TO BE MADE INTO PARCELS WHICH ARE TO BE LABELLED WITH THE LETTERS "SS."

ISSUED BY DRAWING OFFICE DIRECTORATE OF TECHNICAL DEVELOPMENT AIR MINISTRY	TITLE:- B.A. NUTS (STAINLESS STEEL)			RETRACED FOR A.P.C.	DRAWN J.A. Boulger	TRACED Hoare 2-10-30
	ISSUE No.	X	2	3	CHECKED W.S. Stark 3-10-30	APPROVED [Signature] 3-10-30
	ALTERATION	AGS/225	AGS/102	AGS/12		