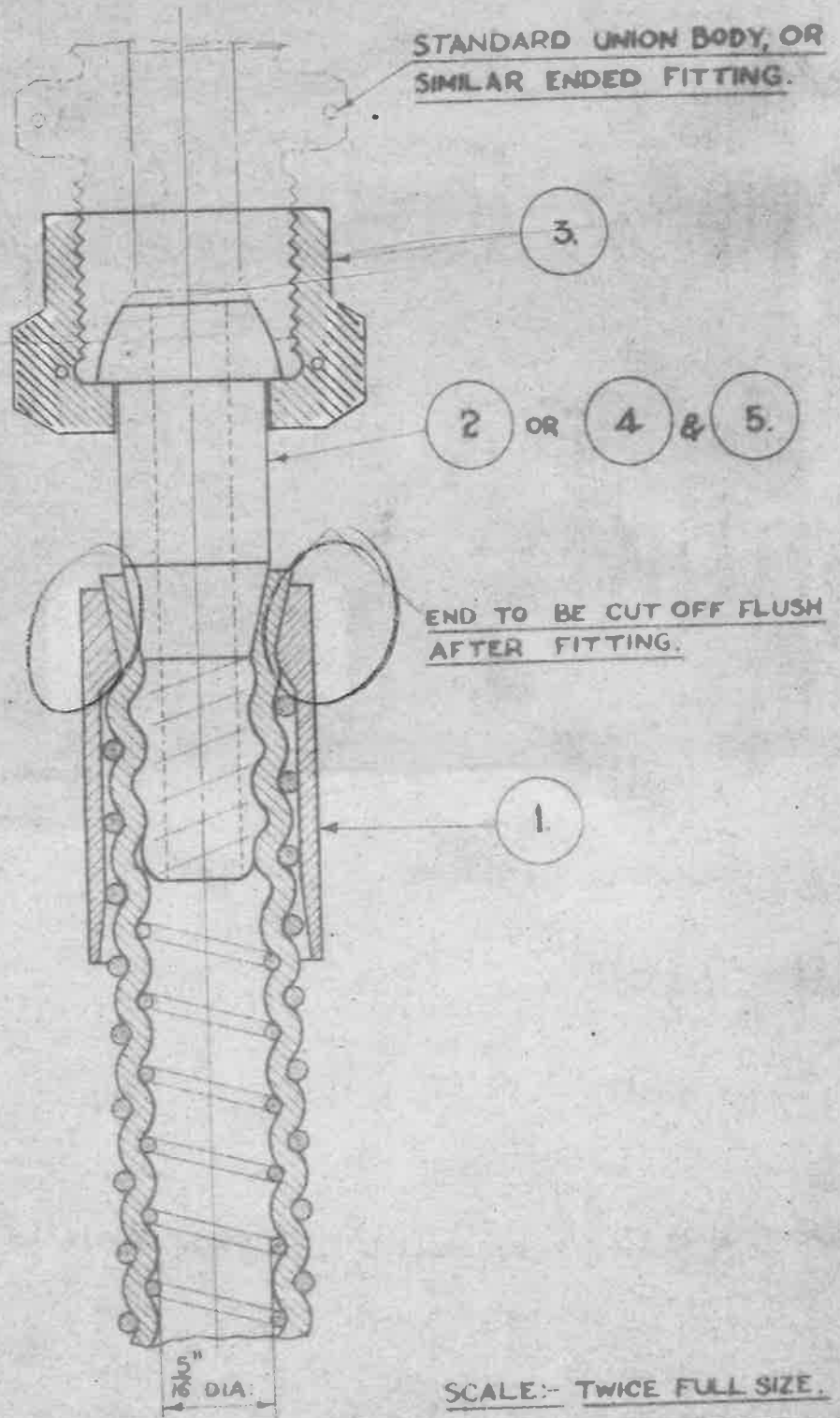


**PETROFLEX END CONNECTION  
ASSEMBLY USING BRASS FITTINGS.**

AIR MINISTRY A.G.S. No. **875.**

SHEET No. **1.** No. of SHEETS **3.**

19-11-30  
F.S. WIGLEY



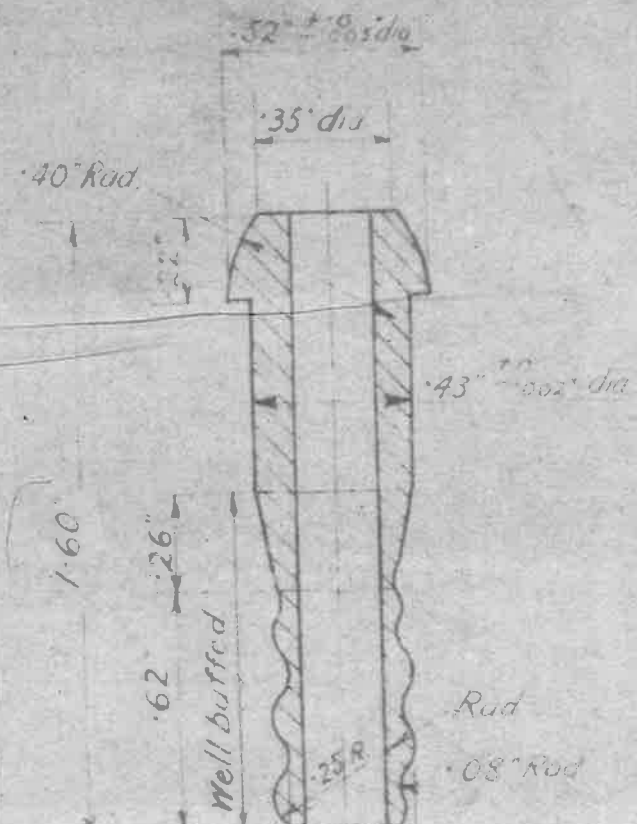
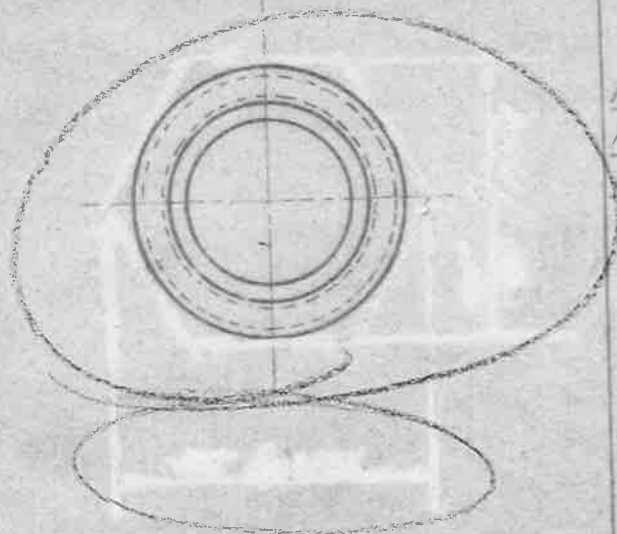
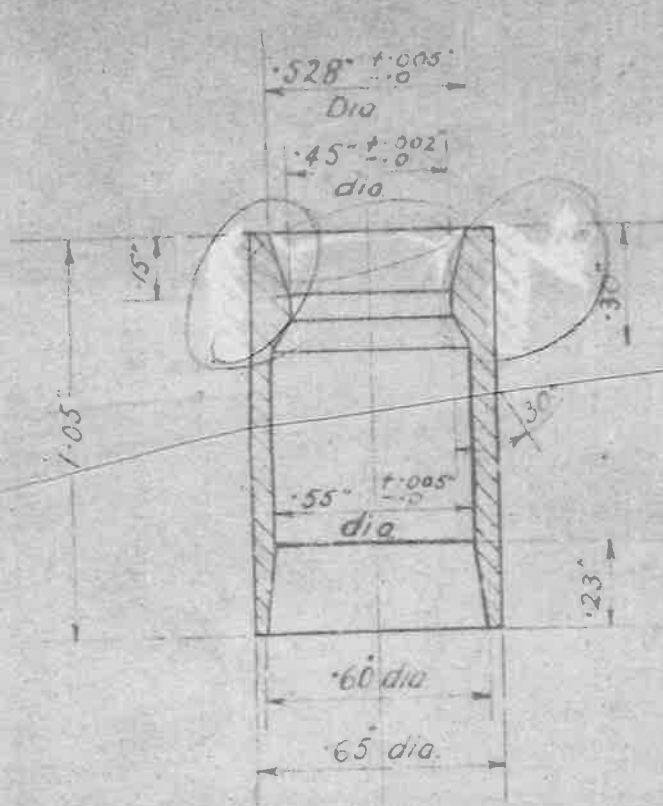
FOR PARTICULARS OF  
BONDING SEE S.I.S. 1637  
SHEET 3.

SCALE:- TWICE FULL SIZE.

ONE COMPLETE STRAIGHT CONNECTION CONSISTS OF PARTS 1, 2, & 3.  
ONE COMPLETE ELBOW CONNECTION CONSISTS OF PARTS 1, 3, 4 & 5.

PART NO.	A.G.S. No.	DESCRIPTION	QUANTITY	REMARKS
1.	875, SHEET No 2 PART 1	SLEEVE.	1.	
2.	875 SHEET No 2 PART 2.	UNION PIECE.	1.	
3.	807 MARK 'B.B.'	UNION NUT.	1.	
4.	875 SHEET No 3 PART 4	ELBOW UNION.	1.	
5.	875 SHEET No 3 PART 5	ELBOW.	1.	

ISSUED BY DRAWING OFFICE DIRECTORATE OF TECHNICAL DEVELOPMENT AIR MINISTRY	TITLE— PETROFLEX END CONNECTION FOR $\frac{3}{8}$ CLASS 1" TUBING ASSEMBLY.					RETRACED FOR A.P.C.	DRAWN J.M. THOMSON	RM. TRACED D.O. 13-1-30
	ISSUE No.	1	2	3	4	5	CHECKED T.M. WALKER	APPROVED G.W. 25-11-30
	ALTERATION	AGS/7230	AS No 183	AS No 45	AS No 312	AS No 514	RECH. 11-30	



R.H. Single start  
helical thread  
5TPI

Dia at bottom  
of thread  
Dia at top  
of thread



Specification:-

Brass to B.S. Spec: 251 (Latest issue) or  
Brass to B.S. Spec: 249 (Latest issue.)

Specification:-

Brass to B.S. Spec: 251 (Latest issue)

1. Sleeve.

2. Union Piece.

Issued by Drawing  
Office Sire...  
of  
Technical Development

Title :- Petroflex End Connection  
Details for 5/16 Glass 'I' Tubing

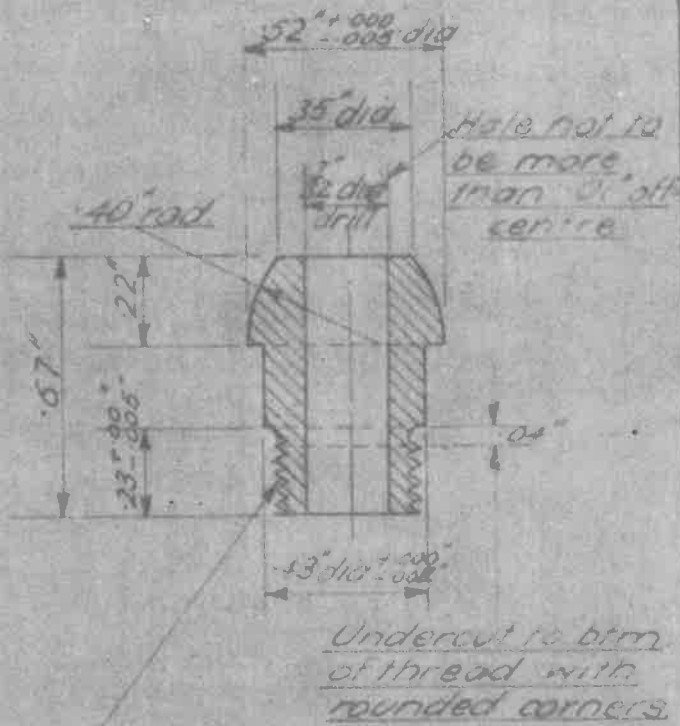
Retraced for  
A.P.C

Drawn  
I.M.Thomson

Traced

Issue

2	3
---	---



Screwed 26 TPI Whit form 38°/90  
Screw threads to be of Whitworth formation and within the limits of grade and play as specified for standard fits for similar pitch of thread in B.S. spec No 84.

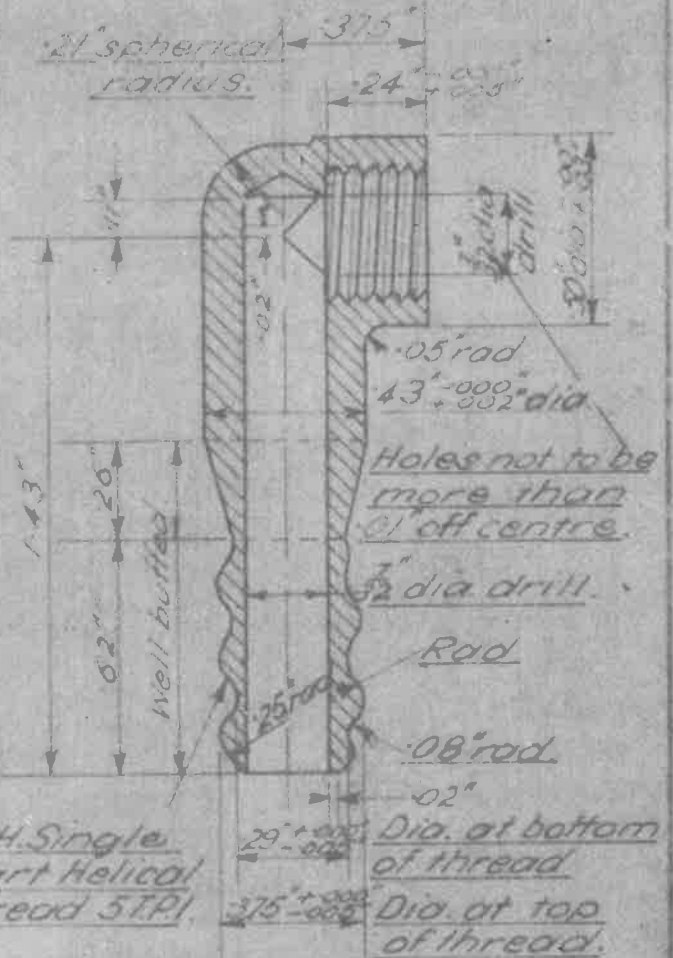
NOTE: - This Union screwed and soldered into Elbow Part No 5 after assembly of Union Nut Part No 3.

Specification:

Brass to B.S. spec. 151 (Latest issue)

4 ELBOW UNION

Screwed 26 TPI Whit Form 38°/90  
Screw threads to be of Whitworth formation and within the limits of grade and play as specified for standard fits for similar pitch of thread in B.S. spec No 84.



Specification:

Brass stamping to B.S. spec. 149 (Latest issue) or brass to B.S. spec. 151 (Latest issue)

5 ELBOW

ISSUED BY DRAWINGS OFFICE DIRECTORATE OF TECHNICAL DEVELOPMENT AIR MINISTRY	TITLE: Petroflex End Connection details for 5 class I tubing.	RETRACTED FOR APC	DRAWN	RETRACTED E.G. J.L.H.
ISSUE No	X	2	3	
ALTERATION	1110	1111	1112	